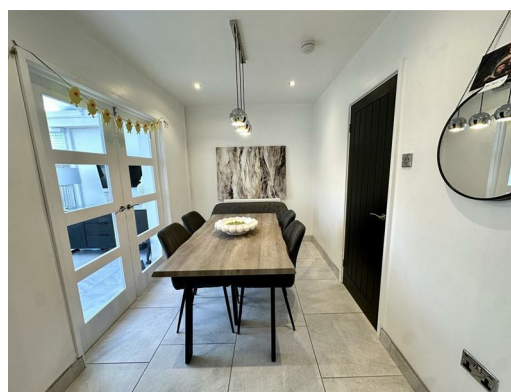




**32 Alundale Road, Liverpool, L12 9JT**

**Offers around £225,000**

Alpha-move are delighted to offer this fantastic three bedroom extended townhouse on Alundale Rd L12 , close to schools, local amenities and major transport links. The layout consists of a hallway, front living room, rear dining room, kitchen and insulated conservatory on the ground floor, with two double bedrooms, family bathroom, separate wc and smaller bedroom. Externally, there is a garage and driveway parking at the front, with a large garden and patio to the rear that benefits from a southerly aspect. This beautiful home has been modernised throughout and is in turnkey condition ready for immediate occupation, perfect for first time buyers, young and growing families. Early viewing essential.



## 32 Alundale Road, Liverpool, L12 9JT

### Entrance Hall

3'10" x 3'5" (1.17 x 1.06)

Composite door to front aspect.

### Reception Room One

18'10" x 11'5" (5.76 x 3.48)

Log burner, radiator, upvc window to front aspect.

### Reception Room Two

11'5" x 7'3" (3.49 x 2.23)

French doors to conservatory, radiator.

### Kitchen

14'6" x 7'3" (4.43 x 2.21)

Kitchen comprises of various wall and base units, oven, hob, extractor, stainless steel sink, upvc window to rear aspect.

### Conservatory

12'0" x 10'1" (3.68 x 3.09)

Radiator, upvc french doors and window to rear aspect.

### Bedroom One

11'10" x 8'3" (3.61 x 2.52)

Radiator, upvc window to front aspect.

### Bedroom Two

11'3" x 11'9" (3.45 x 3.59)

Fitted wardrobes, radiator, upvc window to rear aspect.

### Bedroom Three

11'8" x 7'6" (3.57 x 2.29)

Radiator, upvc window to rear aspect.

### Bathroom

6'11" x 4'10" (2.13 x 1.49 )

Bath with shower over, vanity sink, upvc window to front aspect.

### WC

5'4" x 3'6" (1.63 x 1.07 )

Wash hand basin, wc.

### Garage

