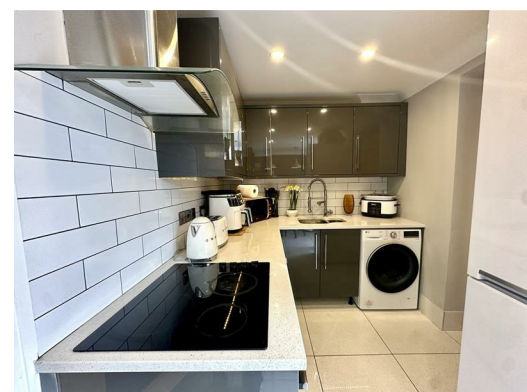




72 Adcote Road, Liverpool, L14 0LP

Offers around £157,950

Alpha-move are delighted to offer this fantastic three bedroom extended townhouse on Adcote Road L14, close to schools, local amenities and major transport links. The layout briefly comprises of a porch, front living room, rear kitchen diner and four piece bathroom on the ground floor, with three double bedrooms on the upper floor, and an en-suite shower room in the master bedroom. Externally, there is a gated driveway for parking at the front, with a low maintenance patio to the rear also with access to the front via a side alleyway. This property has undergone a full modernisation and is in turnkey condition, with many features making it an excellent choice for first time buyers and young families. Early viewing is essential to avoid disappointment.



72 Adcote Road, Liverpool, L14 0LP

Entrance Porch

5'6" x 5'6" (1.69 x 1.69)

Upvc front door to front aspect.

Reception Room

16'6" x 16'7" (5.05 x 5.07)

Tiled floor, radiators, upvc bay window to front aspect.

Kitchen / Diner

16'3" x 7'10" (4.96 x 2.41)

Kitchen comprises of various wall and base units, oven, hob, extractor, radiator, upvc french doors to rear aspect.

Bathroom

10'4" x 6'2" (3.17 x 1.88)

Bath, walk in shower, wc, wash hand basin, chrome towel rail, upvc window to side aspect.

Bedroom One

13'1" x 9'9" (4.01 x 2.98)

Radiator, upvc window to front aspect.

En-suite

7'5" x 4'9" (2.27 x 1.45)

Fully tiled, shower, wc, wash hand basin.

Bedroom Two

12'1" x 8'8" (3.69 x 2.66)

Radiator, upvc window to rear aspect.

Bedroom Three

9'0" x 7'2" (2.76 x 2.19)

Radiator, upvc window to rear aspect.

