

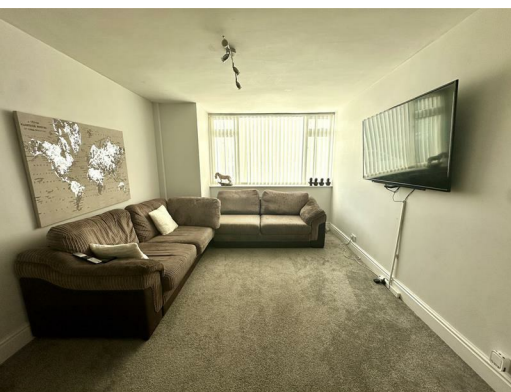


**61 Jeffereys Crescent, Liverpool, Merseyside, L36 4JR**

**Offers around £205,000**

Alpha-Move area delighted to offer this spacious three bedroom semi detached property located on Jefferey's Crescent L36, close to schools, local amenities and major transport links for road and rail. The accommodation briefly comprises of an entrance hall, large through reception room, kitchen/diner, utility room and conservatory on the ground floor with two double bedrooms, family shower room and smaller bedroom on the upper floor.

Externally there is off road parking to the front and a low maintenance paved patio and storage shed to the rear. This property may benefit from some cosmetic improvement and would be ideal for first time buyers and young families. Early viewing recommended.





## 61 Jeffereys Crescent, Liverpool, Merseyside, L36 4JR

### Entrance Hall

14'7" x 5'5" (4.46 x 1.67)

Radiator, upvc door to front aspect.

### Reception Room

24'1" x 10'9" (7.35 x 3.29)

Radiators, upvc window to front aspect.

### Kitchen/Diner

14'11" x 9'10" (4.57 x 3.02)

Kitchen comprises of various wall and base units, oven, hob, extractor fan, upvc french doors to conservatory, upvc door to side aspect, radiator.

### Utility Room

7'11" x 5'5" (2.43 x 1.66)

Combi boiler, radiator, upvc window to side aspect.

### Conservatory

11'10" x 9'5" (3.61 x 2.89)

Upvc windows and door to rear aspect.

### Bedroom One

12'10" x 10'4" (3.93 x 3.17)

Radiator, upvc window to front aspect.

### Bedroom Two

10'10" x 10'4" (3.31 x 3.17)

Fitted wardrobes, radiator, upvc window to rear aspect.

### Bedroom Three

7'9" x 6'7" (2.38 x 2.03)

Radiator, upvc window to front aspect.

### Family Bathroom

5'11" x 5'9" (1.81 x 1.76)

Shower, wc, wash hand basin, chrome radiator, upvc window to side aspect.

