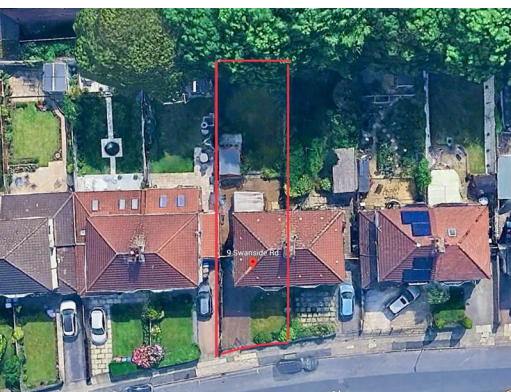




9 Swanside Road, Liverpool, L14 7NJ

Offers around £235,000

Alpha-move are delighted to offer this super spacious three bedroom extended semi in a sought after location on Swanside Rd L14, close to schools, local amenities, hospitals and major transport links for road and rail. Set on a large plot the layout consist of a porch, front living room, rear sitting room and kitchen / diner on the ground floor, with two double bedrooms (both with fitted wardrobes), family shower room, separate wc and smaller bedroom on the upper floor. Externally, there is a small garden and block paved driveway at the front and side with multi car parking, and a large mature garden and patio to the rear that benefits from not being overlooked. Although in need of some cosmetic upgrading, this beautiful semi is packed with potential to extend at the side and rear (subject to appropriate consents), and also benefits from some recent upgrading (windows, heating and wiring) making this a fantastic opportunity for growing families and those in need of more living space. Early viewing is essential. Offered with no chain.



9 Swanside Road, Liverpool, L14 7NJ

Entrance Porch

6'0" x 3'6" (1.85 x 1.08)

UPVC door to front aspect.

Entrance Hall

13'10" x 6'0" (4.23 x 1.85)

Meter cupboard, radiator, upvc to side aspect, door to front aspect.

Reception Room One

14'0" x 12'11" (4.29 x 3.95)

Radiator, upvc bay window to front aspect.

Reception Room Two

13'1" x 11'11" (3.99 x 3.65)

Radiator, inset gas fire, patio doors to rear aspect.

Kitchen

16'9" x 6'11" (5.11 x 2.11)

Kitchen comprises of various wall and base units, double oven, radiator, hob, upvc door and window to rear and side aspect.

Bedroom One

11'10" x 13'11" (3.61 x 4.25)

Fitted wardrobes, radiator, upvc bay window to front aspect.

Bedroom Two

13'3" x 10'10" (4.05 x 3.31)

Fitted wardrobes, radiator, upvc window to rear aspect.

Bedroom Three

7'4" x 7'5" (2.26 x 2.28)

Radiator, upvc window to front aspect.

Bathroom

7'4" x 6'2" (2.25 x 1.89)

Double shower cubical, towel radiator, wash hand basin, upvc window to aspect side aspect.

WC

4'11" x 2'6" (1.51 x 0.78)

WC, upvc window to side aspect.

