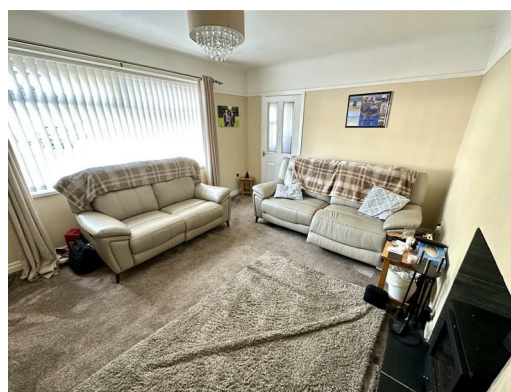




56 Sheppard Avenue, Liverpool, L16 2LD

Offers around £234,950

Alpha-move are delighted to offer this fantastic three bedroom mid-townhouse opportunity in a sought after location on Sheppard Ave L16, close to schools, local parks, shopping centres and major transport links for road and rail. The layout consists of a wide hall, front living room and open plan rear kitchen/diner, wc and store on the ground floor. The first floor has three double bedrooms and large family shower room. Externally, the is driveway parking for two cars at the front with a large mature garden and patio to the rear also. This spacious home is situated on a large plot and packed with potential for extending at the rear (subject to appropriate consents), to create a substantial family home suitable for first time buyers, young families and those looking for a more spacious environment. Early viewing essential.



56 Sheppard Avenue, Liverpool, L16 2LD

Hall

13'4" x 6'8" (4.07 x 2.05)

Composite door, radiator and meter cupboard

Front room

14'6" x 11'8" (4.44 x 3.58)

UPVC to front aspect, radiator, smokeless multi fuel burner

Kitchen/diner

20'9" x 10'9" (6.35 x 3.29)

UPVC windows and french doors to rear aspect, radiator combi boiler, wall and base units, 5 burner hob, oven and extractor fan

Out House

10'7" x 6'4" (3.25 x 1.95)

WC and store room

Bathroom

10'4" x 6'9" (3.15 x 2.08)

UPVC to rear aspect, double shower, wc and sink, radiator and store cupboard

Front bedroom

12'4" x 11'3" (3.76 x 3.45)

UPVC to front aspect and radiator

Front bedroom 2

9'1" x 8'0" (2.79 x 2.45)

UPVC to front aspect and radiator

Rear bedroom

14'9" x 9'10" (4.52 x 3.02)

UPVC to rear aspect, radiator and built in cupboard

