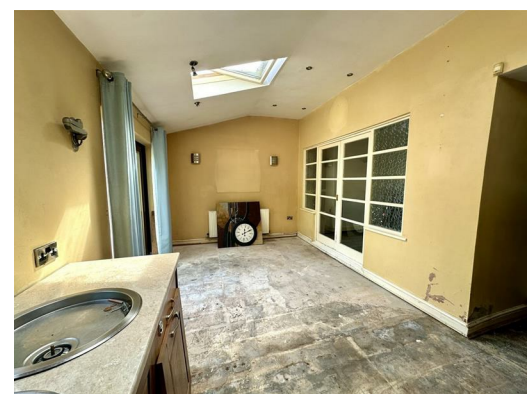
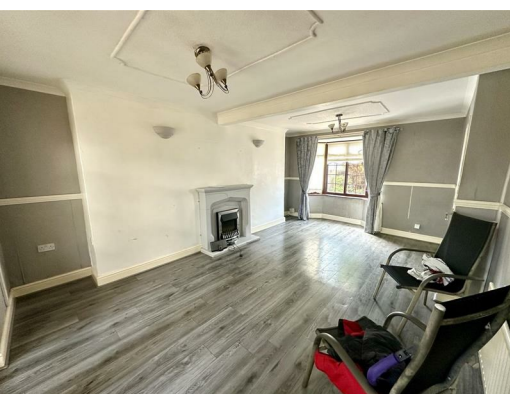




30 Easton Road, Liverpool, Merseyside, L36 4PB

Offers around £165,000

Alpha-move are delighted to offer this fantastic three bedroom extended semi refurbishment opportunity on Easton Rd L36, close to schools, local amenities and major road and rail transport links. The ground floor layout starts with the hallway, front living room and open plan rear kitchen/diner, with three double bedrooms and family bathroom on the upper floor. Externally, there is a concrete press driveway for off street parking at the front with a large garden at the rear. This is a spacious home that needs to be viewed to be fully appreciated, and although in need of modernisation it is packed with potential and would be perfect for first time buyers and young families. Early viewing essential. Offered with no chain.



30 Easton Road, Liverpool, Merseyside, L36 4PB

Entrance Hall

12'1" x 7'9" (3.69 x 2.38)

Radiator, upvc window to front aspect.

Reception Room

20'5" x 12'4" (6.23 x 3.78)

Gas fire and surround, radiator, upvc bay window to front aspect.

Kitchen / Diner

19'1" x 18'11" (5.84 x 5.77)

Kitchen comprises of various wall and base units, stainless steel sink, radiators, upvc window to rear aspect.

Bedroom One

12'2" x 10'3" (3.71 x 3.13)

Radiator, upvc window to front aspect.

Bedroom Two

13'2" x 8'2" (4.02 x 2.49)

Combi boiler, radiator, upvc window to rear aspect.

Bedroom Three

9'8" x 8'6" (2.96 x 2.61)

Radiator, upvc window to front aspect.

Bathroom

7'9" x 6'7" (2.38 x 2.017)

Bath with shower over, wc, wash hand basin, radiator.

