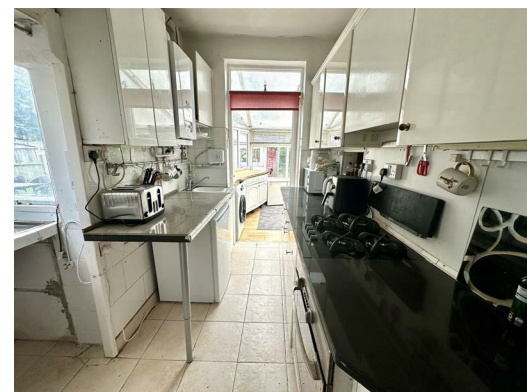




**15 Moss Side, Knotty Ash, Liverpool, L14 0JS**

**Offers around £140,000**

Alpha-move offer this fantastic three bedroom semi modernisation opportunity in Moss Side L14, close to schools, local amenities and major transport links for road and rail. Set in a quiet cul-de-sac, a big frontage provides driveway parking for several cars. Internally, the ground floor layout consists of a porch, hallway, front sitting room, rear lounge, wc, kitchen and conservatory, with two double bedrooms, family bathroom and smaller bedroom on the upper floor. A good sized rear garden, patio and brick built garage is packed with potential for extending (subject to appropriate consents). Although in need of upgrading, this home and the substantial plot it sits on, delivers a unique listing to attract first time buyers and young families with an appetite for opportunity and space. Offered with no chain, early viewing is essential.



# 15 Moss Side, Knotty Ash, Liverpool, L14 0JS

## Entrance Porch

7'9" x 3'10" (2.38 x 1.18)

## Entrance Hall

11'10" x 5'3" (3.61 x 1.61)

Meter cupboard, wooden door to front aspect.

## Reception Room One

12'10" x 11'0" (3.93 x 3.37)

Radiator, upvc window to front aspect.

## Reception Room Two

12'8" x 10'8" (3.87 x 3.26)

Radiator, wooden door to rear aspect.

## Kitchen

8'11" x 6'0" (2.72 x 1.85)

Comprises of various wall and base units.

## Loggia

16'7" x 8'9" (5.06 x 2.68)

Radiator, upvc window to rear aspect.

## Downstairs WC

4'11" x 2'11" (1.51 x 0.89)

Low level wc, wash hand basin.

## Bedroom One

13'3" x 10'6" (4.06 x 3.21)

Fitted wardrobes, radiator, upvc window to front aspect.

## Bedroom Two

11'6" x 10'9" (3.53 x 3.29)

Radiator, upvc window to rear aspect.

## Bedroom Three

7'5" x 6'11" (2.28 x 2.13)

Radiator, upvc window rear aspect.

## Family Bathroom

8'3" x 5'10" (2.54 x 1.78)

Shower, wash hand basin, low level wc, radiator, upvc window to front aspect.

## Garage

20'4" x 8'10" (6.2 x 2.7)

