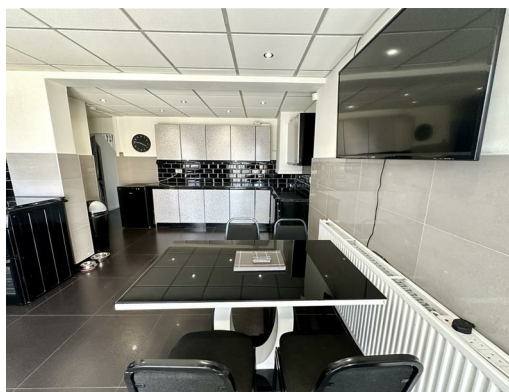




**4 Cunningham Road, Liverpool, L13 4AA**

**Offers around £210,000**

Alpha-move are delighted to offer this fantastic four bed extended town house on Cunningham Rd L13, close to schools, local amenities and major road and rail transport links. This spacious home consists of a wide hallway, front living room, wc and shower room and open plan kitchen/diner on the ground floor, with four double bedrooms (main with fitted wardrobes) and family bathroom on the first floor. Externally there is driveway parking at the front with a low maintenance rear yard that benefits from a southerly aspect. This property would be ideal for large and growing families and early viewing is recommended.



## 4 Cunningham Road, Liverpool, L13 4AA

### Entrance Hall

20'0" x 5'9" (6.11 x 1.76)

Double radiator, composite door.

### Reception Room

15'8" x 12'11" (4.78 x 3.95)

Gas fire and surround, radiator, upvc window to front aspect.

### Ground Floor Shower Room & WC

5'10" x 4'10" (1.79 x 1.48)

Shower cubical, low level wc.

### Kitchen

10'7" x 9'8" (3.25 x 2.95)

Kitchen comprises of various wall and base units, stainless steel sink, upvc window to rear aspect.

### Dining Room

16'3" x 12'1" (4.97 x 3.69)

Wall and base units, radiator, upvc patio doors to rear aspect.

### Bedroom One

12'10" x 10'4" (3.92 x 3.15)

Fitted wardrobes, radiator, upvc window to front aspect.

### Bedroom Two

9'4" x 9'1" (2.85 x 2.78)

Radiator, upvc window to rear aspect.

### Bedroom Three

16'11" x 9'4" (5.16 x 2.87)

Combi boiler, radiator, upvc window to rear aspect.

### Bedroom Four

11'7" x 8'0" (3.54 x 2.46)

Radiator, upvc window to front aspect.

### Family Bathroom

6'2" x 6'2" (1.89 x 1.88)

Bath with shower over, wash hand basin, wc, towel rail, upvc window to side aspect.

