



Cressing Road, Braintree, CM7 3PG

welcome to

Cressing Road, Braintree

**** GUIDE PRICE £700,000 - £800,000 **** William H Brown a proud to offer this truly exceptional five bedroom family home offering striking kerb appeal, superior craftsmanship, and an abundance of living space designed for comfort, style, and modern family living.



Hallway

Obscure windows to front aspect. Stairs to first floor. Under stairs cupboards. Inset lighting. Storage cupboard. Luxury vinyl flooring.

Cloakroom

Low level WC. Vanity hand wash basin. Heated towel rail.

Kitchen / Diner

27' 6" x 15' 9" max (8.38m x 4.80m max)
Double glazed windows with French doors to rear garden with a further double glazed French door leading to conservatory. Range of bespoke base and eye level units with granite work surface over incorporating an integrated induction hob with overhead extractor fan. Built in double oven . Integrated dishwasher. Island with inset sink with hot and cold mixer tap. Double glazed window to side aspect. Built in electric flame fire. Luxury vinyl flooring.

Conservatory

17' 1" x 8' 1" (5.21m x 2.46m)
Double glazed windows to rear and side aspect. Double glazed French doors to rear garden.

Utility Room

9' 10" x 8' 7" (3.00m x 2.62m)
Double glazed window to side aspect. Double glazed skyline window. Range of matching bespoke base and eye level units with work surface over. Wall mounted boiler. Space for American style fridge freezer. Inset sink with hot and cold mixer tap. Plumbing and space for washing machine and tumble dryer. Luxury vinyl flooring.

Lounge

15' 10" x 11' 11" (4.83m x 3.63m)
Two double glazed windows to side aspect. Built in electric living flame fire. Carpets. Pendant lighting.

Bedroom Five

11' 10" x 11' (3.61m x 3.35m)
Double glazed window to side aspect. Carpets. Pendant lighting.

Landing

Double glazed window to front aspect. Radiator. Carpets. Inset spotlights. Loft access. Doors leading to:-

Bedroom One

16' 1" x 12' 2" (4.90m x 3.71m)
Two double glazed windows to side aspect. Carpets. Pendant lighting.

En-Suite

4' 1" x 4' 5" (1.24m x 1.35m)
Obscure double glazed window to rear aspect. Walk in shower cubicle. Low level WC. Wall mounted hand wash basin. Tiled flooring

Bedroom Two

14' 9" x 13' 5" (4.50m x 4.09m)
Double glazed French doors to balcony. Range of fitted wardrobes. Carpets. Pendant lighting. Door leading to:-

En-Suite

6' 3" x 3' 11" (1.91m x 1.19m)
Obscure double glazed window to rear aspect. Walk in shower cubicle. Low level WC. Wall mounted hand wash basin. Heated towel rail. Tiled flooring

Bedroom Three

11' 10" x 11' 10" (3.61m x 3.61m)
Double glazed window to side aspect. Radiator. Carpets. Pendant lighting.

Bedroom Four

11' 10" x 11' 10" (3.61m x 3.61m)
Double glazed window to side aspect. Radiator. Carpets. Pendant lighting.

Garden

Large rear garden commencing with a paved patio seating area and remainder laid to lawn. Enclosed by panel fencing. Side gate.

Parking

Off street parking for multiple cars.



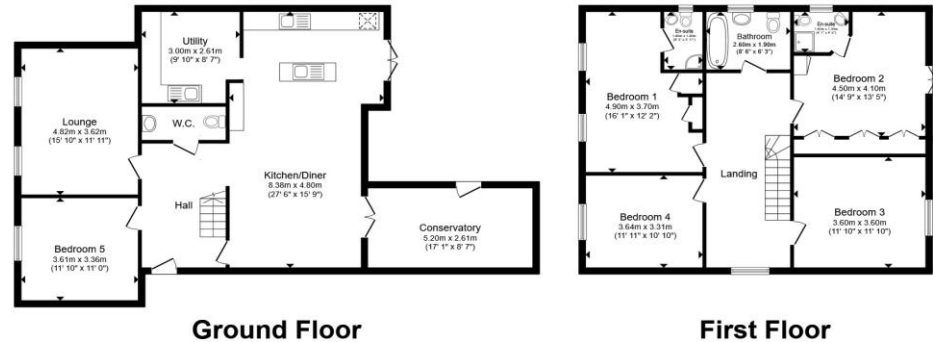
view this property online williamhbrown.co.uk/Property/BTR110068



welcome to Cressing Road, Braintree

- Detached Family House
- Five Bedrooms
- Luxurious Kitchen Family Room
- Two En-Suites & Family Bathroom
- Conservatory

Tenure: Freehold EPC Rating: Awaiting
Council Tax Band: F



guide price

£700,000 - £800,000

Total floor area 191.5 m² (2,061 sq.ft.) approx

This floor plan is for illustrative purposes only. It is not drawn to scale. Any measurements, floor areas (including any total floor area), openings and orientation are approximate. No details are guaranteed, they cannot be relied upon for any purpose and they do not form part of any agreement. No liability is taken for any error, omission or misstatement. A party must rely upon its own inspection(s). Powered by www.propertybox.io

**william
h brown**



view this property online [williamhbrown.co.uk/Property/BTR110068](https://www.williamhbrown.co.uk/Property/BTR110068)



Property Ref:
BTR110068 - 0002

1. MONEY LAUNDERING REGULATIONS Intending purchasers will be asked to produce identification documentation at a later stage and we would ask for your co-operation in order that there is no delay in agreeing the sale. 2. These particulars do not constitute part or all of an offer or contract. 3. The measurements indicated are supplied for guidance only and as such must be considered incorrect. Potential buyers are advised to recheck measurements before committing to any expense. 4. We have not tested any apparatus, equipment, fixtures or services and it is in the buyers interest to check the working condition of any appliances. 5. Where an EPC, or a Home Report (Scotland only) is held for this property, it is available for inspection at the branch by appointment. If you require a printed version of a Home Report, you will need to pay a reasonable production charge reflecting printing and other costs. 6. We are not able to offer an opinion either written or verbal on the content of these reports and this must be obtained from your legal representative. 7. Whilst we take care in preparing these reports, a buyer should ensure that his/her legal representative confirms as soon as possible all matters relating to title including the extent and boundaries of the property and other important matters before exchange of contracts.

William H Brown is a trading name of Sequence (UK) Limited which is registered in England and Wales under company number 4268443, Registered Office is Cumbria House, 16-20 Hockliffe Street, Leighton Buzzard, Bedfordshire, LU7 1GN. VAT Registration Number is 500 2481 05.

**william
h brown**



01376 320018



braintree@williamhbrown.co.uk



51-53 High Street, BRAINTREE, Essex, CM7 1JX



[williamhbrown.co.uk](https://www.williamhbrown.co.uk)

Please note the marker reflects the
postcode not the actual property