



Syers Field, Blackmore End, CM7 4DE

welcome to

Syers Field

A rare opportunity to acquire this two bedroom semi detached bungalow in the sought after picturesque hamlet of Blackmore End just outside Braintree. The accommodation comprises; hallway, lounge, dining area, kitchen, two bedrooms and a shower room. The property also benefits from double glazed windows, driveway for three/four cars, 120' rear garden backing onto fields.



Entrance Hall

Double glazed door to front, radiator, access to loft space, airing cupboard.

Lounge

11' 10" x 10' 6" plus recess (3.61m x 3.20m plus recess)
Lounge

Dining Area

9' 8" plus recess x 9' 7" (2.95m plus recess x 2.92m)
Double glazed window to rear, radiator, wood burning stove, radiator, open to;

Kitchen

13' 3" x 9' 6" (4.04m x 2.90m)
Double glazed windows to front and rear and door to rear garden, range of wall and base units with rolled edge work surfaces incorporating inset sink and drainer, plumbing for washing machine, space for dryer, plumbing for dishwasher, integrated double oven, hob and extractor hood over, space for fridge freezer.

Bedroom One

12' x 11' to wardrobes (3.66m x 3.35m to wardrobes)
Double glazed window to front, radiator, built in triple wardrobes.

Bedroom Two

10' 9" x 8' 8" (3.28m x 2.64m)
Double glazed French doors to rear garden, radiator, laminate flooring.

Shower Room

Two opaque double glazed windows to rear, walk in shower cubicle, low level WC, vanity wash hand basin with units under, tiled walls, laminate flooring.

Front Garden

The front of the property is laid to lawn with a hedge to the borders, various flower displays, gated access to the rear garden.

Rear Garden

The rear garden is approx. 120' in length and backs onto open fields, there are two patio seating areas, summer house to remain, various tree and flower displays, enclosed by panelled fencing.

Parking

To the front there is a driveway providing parking for three/four cars.

Agents Note:

This property has lots of potential internally and potential for a rear extension (stpp). This is a rare gem and viewings are advised ASAP to avoid disappointment.



check out more properties at williamhbrown.co.uk



welcome to

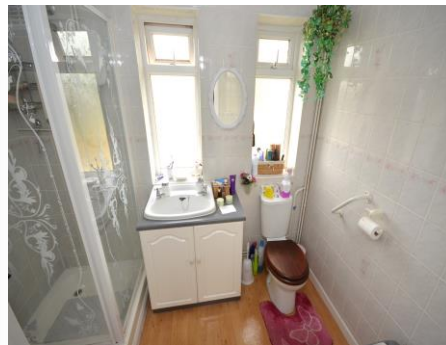
Syers Field

- Two Bedroom Semi Detached Bungalow
- Picturesque Hamlet of Blackmore End
- 120' Rear Garden Backing onto Fields
- Parking for Three to Four Cars
- Double Glazed Throughout

Tenure: Freehold EPC Rating: Awaiting

Guide price

£300,00 - £325,000



Please note the marker reflects the postcode not the actual property

check out more properties at williamhbrown.co.uk

see all our properties on zoopla.co.uk | rightmove.co.uk | sequencehome.co.uk



Property Ref:
BTR104348 - 0001

1. MONEY LAUNDERING REGULATIONS Intending purchasers will be asked to produce identification documentation at a later stage and we would ask for your co-operation in order that there is no delay in agreeing the sale. 2. These particulars do not constitute part or all of an offer or contract. 3. The measurements indicated are supplied for guidance only and as such must be considered incorrect. Potential buyers are advised to recheck measurements before committing to any expense. 4. We have not tested any apparatus, equipment, fixtures or services and it is in the buyers interest to check the working condition of any appliances. 5. Where an EPC, or a Home Report (Scotland only) is held for this property, it is available for inspection at the branch by appointment. If you require a printed version of a Home Report, you will need to pay a reasonable production charge reflecting printing and other costs. 6. We are not able to offer an opinion either written or verbal on the content of these reports and this must be obtained from your legal representative. 7. Whilst we take care in preparing these reports, a buyer should ensure that his/her legal representative confirms as soon as possible all matters relating to title including the extent and boundaries of the property and other important matters before exchange of contracts.



william h brown



01376 320018



braintree@williamhbrown.co.uk



51-53 High Street, BRAINTREE, Essex, CM7 1JX



williamhbrown.co.uk