



ABERCORN PLACE, ST JOHN'S WOOD, NW8 £1,250,000 SOLE AGENT Subject to contract

A beautifully presented three bedroom first and second floor duplex apartment within this converted period property benefitting from its own private lock-up garage and use of communal gardens. Having been recently decorated internally, this stylish apartment will delight the discerning purchaser.

*Please note the property is currently tenanted and therefore immediate vacant possession may not be available.

Share Of Freehold (TBC) | Three Bedrooms | Two Bathrooms | Reception | Private Lock Up Garage | Communal Garden | Entrance Phone | Independent Heating

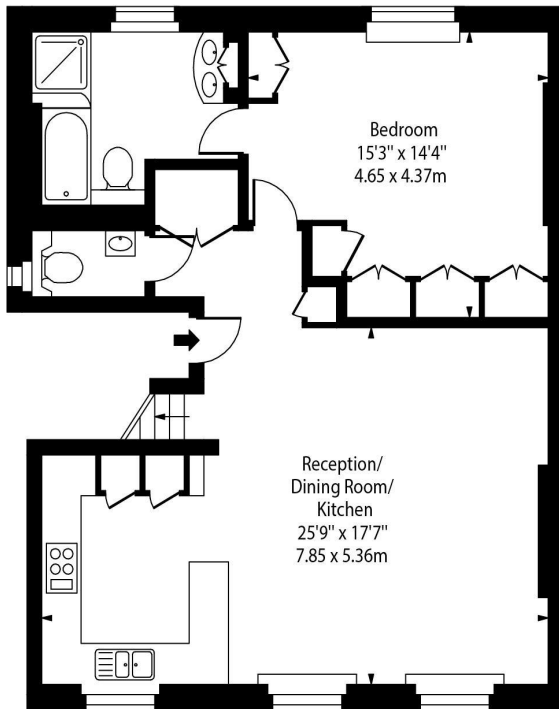
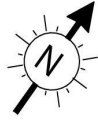


winkworth.co.uk/st-johns-wood

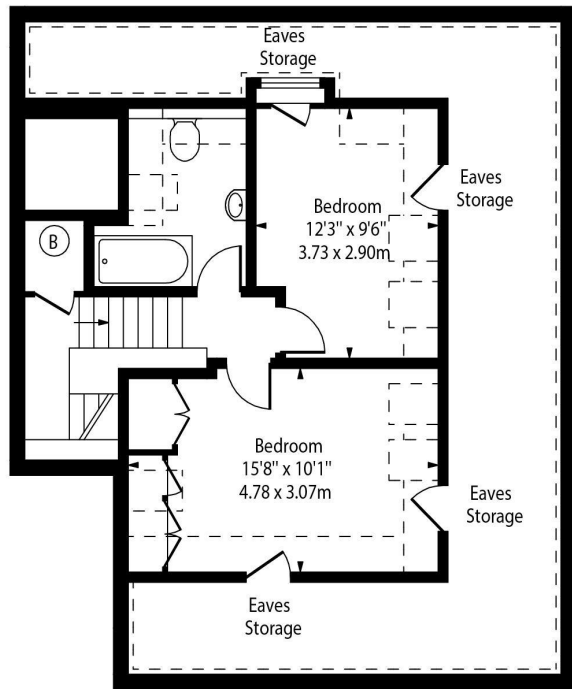
For every step...



Abercorn Place, NW8



First Floor



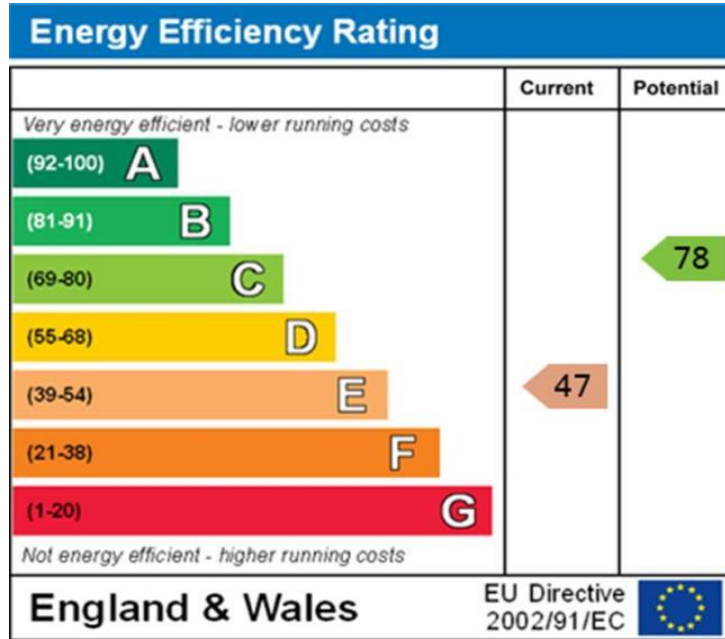
Second Floor

Approx Gross Internal Area 1101 Sq Ft - 102.29 Sq M

Approx Floor Area Including Restricted Heights 1595 Sq Ft - 148.18 Sq M

For Illustration Purposes Only - Not To Scale Floor Plan by www.nogaphotostudio.com Ref: No.43028

This floor plan should be used as a general outline for guidance only. Any intending purchaser or lessee should satisfy themselves by inspection, searches, enquiries and full survey as to the correctness of each statement. Any areas, measurements or distances quoted are approximate and should not be used to value a property or be the basis of any sale or let.



Tenure: Share of Freehold (TBC)

Term: 29/09/1981 to 29/09/2069

NOTES: **Share of Freehold - 999 years (TBC)**

Service Charge: TBC

Current Ground Rent: TBC

Where no figures are shown, we have been unable to ascertain the information. All figures that are shown were correct at the time of printing.

NB: These particulars are not an offer or contract, nor part of one. You should not rely on statements by Winkworth in the particulars or by word of mouth or in writing "information" as being factually accurate about the property, its condition or its value. Neither Winkworth nor any joint agent has any authority to make any representations about the property, and accordingly any information given is entirely without responsibility on the part of the agents, seller(s) or lessor(s). These particulars are prepared on the basis of the information supplied by our client and are a rough guide for information only. The photographs show only certain parts of the property. We are not able to check all of the information and therefore are unable to guarantee accuracy. All interested parties are therefore advised to undertake all necessary inspections and checks that they deem appropriate. Where displayed, the square footage is taken from the floor plans, which are created by an independent supplier. These measurements are approximate and included for illustrative purposes only. The measurements may vary. Winkworth does not make any representation as to the accuracy of these measurements and you should seek to verify them for yourself. Winkworth accept no liability for any loss you may suffer if you rely on these measurements. All fixtures and fittings, whether fitted or not are deemed removable by the vendor unless stated. Any reference to alterations to, or use of, any part of the property does not mean that any necessary planning, building regulations or other consent has been obtained. Amenities and appliances have not been tested.

St John's Wood | 103-104 St John's Wood Terrace, London NW8 6PL
020 7586 7001 | stjohnswood@winkworth.co.uk

Winkworth

winkworth.co.uk/st-johns-wood

See things differently.