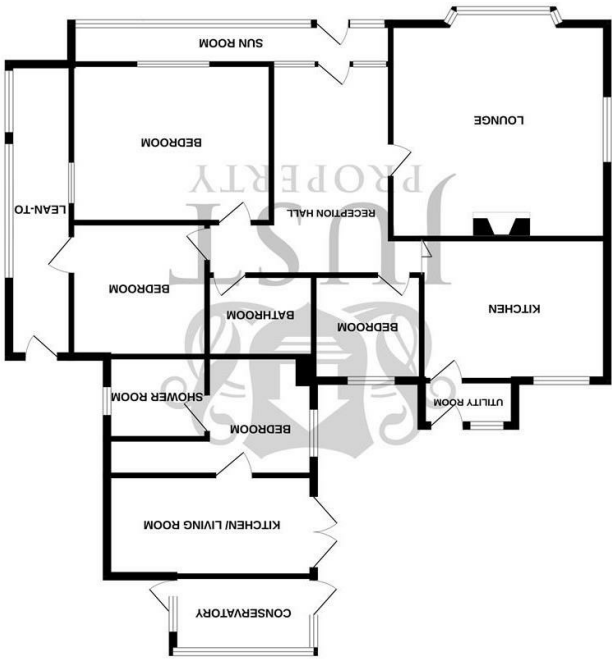




England & Wales		
EU Directive 2002/91/EC		
Energy Efficiency Rating	Current	Potential
	68	82
Very energy efficient - lower running costs		
(92 plus) A		
(81-91) B		
(69-80) C		
(55-68) D		
(39-54) E		
(21-38) F		
(1-20) G		
Not energy efficient - higher running costs		



GROUND FLOOR



www.justproperty.net

Edburton Shepherds Way, Fairlight, TN35 4BD

# FLOORPLANS

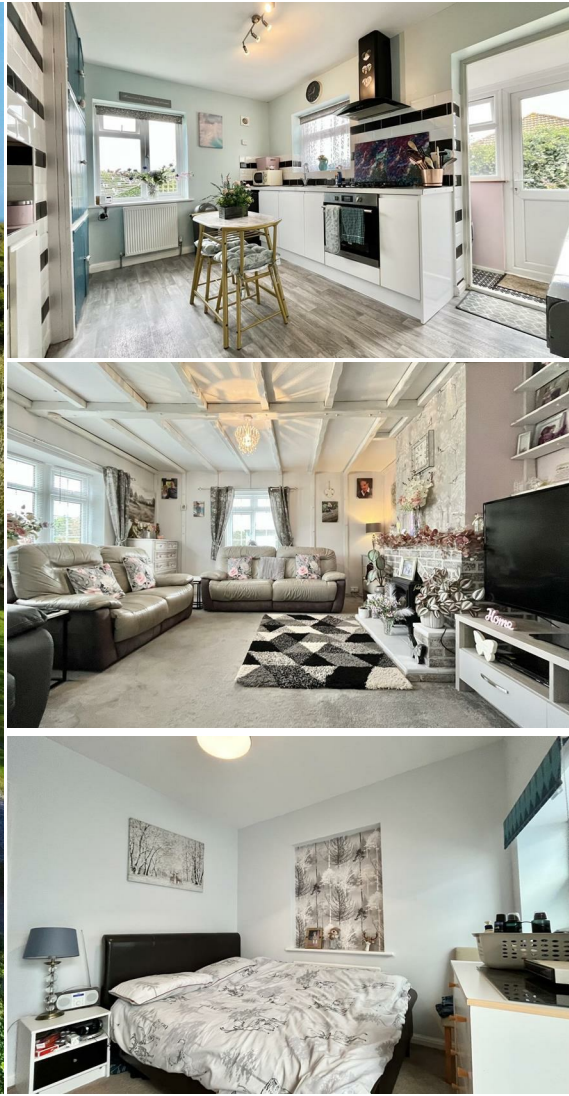


4 Bedrooms null Receptions 2 Bathrooms 1327.69 sq ft

Edburton Shepherds Way, Fairlight, TN35 4BD

Freehold

£560,000












Freehold


£560,000



 4 Bedrooms

 null Receptions

 2 Bathrooms

 1327.69 sq ft

PROPERTY DETAILS

\*\*\* Annex \*\*\*

Situated in the charming village of Fairlight, Hastings, this delightful detached bungalow on Shepherds Way offers a perfect blend of comfort and convenience. Spanning an impressive 1,328 square feet, the property boasts four spacious bedrooms and two well-appointed bathrooms, making it an ideal home for families or those seeking ample living space.

Set on a generous corner plot, this bungalow benefits from parking for up to three vehicles. The property is equipped with double glazing and gas central heating, providing warmth and energy efficiency throughout the year. Additionally, a partial rewire has been completed, enhancing the overall safety and functionality of the home.

One of the standout features of this property is the annex, which comes with its own private entrance and a lovely conservatory. This versatile space can serve as a source of potential income or as a comfortable area for extended family members, offering both privacy and convenience.

Living in Fairlight means enjoying the tranquility of village life while being just a short distance from the vibrant town of Hastings, with its array of shops, restaurants, and beautiful coastline. This bungalow presents a unique opportunity to embrace a peaceful lifestyle in a picturesque setting. Whether you are looking for a family home or a property with rental potential, this bungalow is sure to impress. Don’t miss the chance to make this wonderful property your own.

ROOM DIMENSIONS

Front Door	Bedroom
Sun Room	9'10" x 9'6" (3.01 x 2.92)
23'3" x 3'8" (7.11 x 1.13)	Lean-To
Reception Hall	22'10" x 3'8" (6.96 x 1.13)
14'4" x 8'10" (4.37 x 2.70)	Private access to Annex
Lounge	Open PPlan Kitchen/ Living Room
15'1" x 14'10" (4.60m x 4.52m)	20'7" x 8'2" (6.29 x 2.49)
Kitchen	Conservatory
12'11" x 9'10" (3.94 x 3.01)	12'10" x 6'2" (3.93 x 1.88)
Utility Room	Bedroom
Bedroom	13'6" x 9'0" (4.14 x 2.75)
9'10" x 7'6" (3.01 x 2.30)	Shower Room
Bathroom	7'0" x 4'1" (2.15 x 1.26)
9'0" x 6'5" (2.76 x 1.98)	Front and Rear Gardens
Bedroom	Off Road Parking
13'11" x 10'11" (4.25 x 3.35)	

FEATURES

- Detached Bungalow
- Private Annex
- Four Bedrooms
- 15'1" x 14'10" Lounge
- Reception Hall
- Well Presented Throughout
- Recently Rendered
- Corner Plot
- Village Location



Please note that we have not tested the services or any of the equipment or appliances in this property, accordingly we strongly advise prospective buyers to commission their own survey or service reports before finalising their offer to purchase. While we endeavour to make our sales particulars fair, accurate and reliable, they are only a general guide to the property and accordingly if there are any point which is of particular importance to you, please contact the office and we will be pleased to check the position for you, especially if you are contemplating travelling some distance to view the property.