



Victoria Mill, Houldsworth Street, Reddish, Stockport

Asking Price £130,000

Open To Investors & Residential Buyers - EWS1 Has Been Obtained

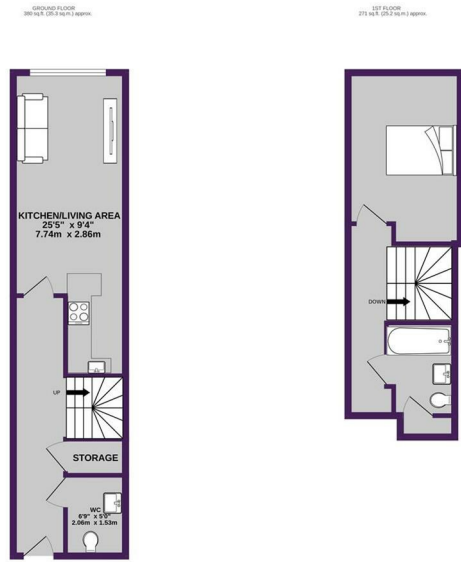
If you fancy living somewhere with oodles of charm and character, this one bed apartment within an award-winning Victorian mill conversion is right up your street.

Featuring spacious open plan living/kitchen space, this apartment offers modern contemporary living with fantastic transport links. The train station is just 0.4 miles from the development which is a quick 8 minute stroll - perfect for those commuting into Stockport, Manchester city centre and the surrounding areas.

Aside from stunning views across the Manchester skyline, tenants benefit from an abundance of amenities. A friendly 24-hour concierge, dedicated bike storage, elevator to all floors (to save your legs), and a secure entry system are just a few of the key USPs of this beautiful development. There's also an on-site gym - a huge bonus for those 'leg days' where it's a mission just to get home!

This property really needs to be seen to be appreciated. Each apartment within this conversion is different, with its own individual charm. With secure private parking and more facilities than you can shake a stick at, there's not much more you could want in a property. This apartment won't be around for long so we recommend an early viewing to avoid disappointment.





Energy Efficiency Rating		Environmental Impact (CO ₂) Rating	
Band	Score	Band	Score
A	92-100	A	35-47
B	81-91	B	48-74
C	69-80	C	75-100
D	55-68	D	101-132
E	39-54	E	133-155
F	21-38	F	156-177
G	1-20	G	178-200

England & Wales

Ascend
Built on higher standards