



Sky Gardens, Spinners Way, Manchester

Offers In Excess Of £165,000

****Open For Residential Buyers & Buy To Let Investors****

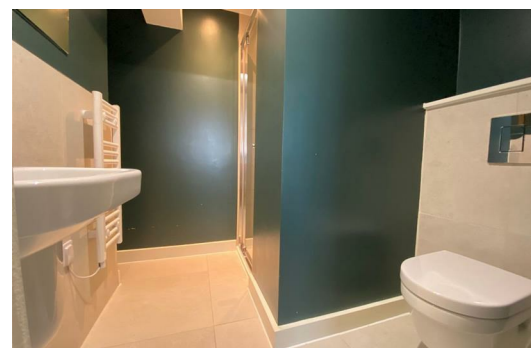
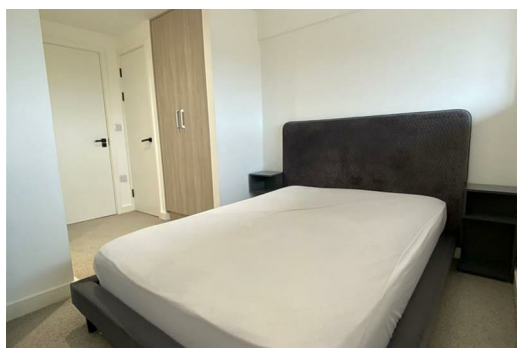
Ascend Properties are over the moon to bring to market this one-bedroom duplex apartment in Sky Gardens and yes, it really does live up to its name.

Perfectly positioned in Castlefield, this apartment puts you right at the heart of Manchester's waterside lifestyle. From buzzing bars and restaurants to cultural hotspots like Castlefield Bowl, Castlefield Gallery, and the Science and Industry Museum, everything you need is right on your doorstep talk about a prime location.

This stylish duplex offers a bright open-plan kitchen and living space and a generous double bedroom, and 1.5 bath rooms, because sharing is overrated. There's a handy downstairs WC, with an en-suite upstairs, so comfort is well and truly built in.

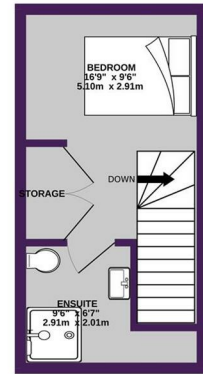
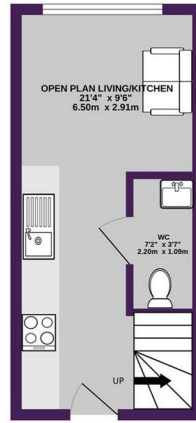
To top it all off, residents can enjoy a stunning communal roof terrace with sweeping views across Manchester city centre, a space that's sure to raise the bar on city living.

With its high specification and unbeatable location, this property is set to rise above the rest. We expect strong interest, so don't sleep on it, get in touch with Ascend Properties today to avoid missing out.



GROUND FLOOR
203 sq. ft. (18.9 sq.m.) approx.

1ST FLOOR
180 sq. ft. (16.7 sq.m.) approx.



TOTAL FLOOR AREA: 383 sq. ft. (35.6 sq.m.) approx.
While every attempt has been made to ensure the accuracy of the figures contained here, measurements of ground, walls, ceilings and any other items are approximate and no responsibility is taken for any variation in size or content. This plan is for guidance purposes only and should be used as such by any prospective purchaser. The services, fixtures and appliances shown here are based on plans and are guaranteed as to their operability or efficiency can be given.
Made with Planner 5D

