

Unit 6 13 Burton Place, Manchester, Lancashire, M15 4PT
Tel: 0161 637 8336
Email: contactus@ascendproperties.com
www.ascendproperties.com

Ascend

Built on higher standards



Victoria Mill, Lower Vickers Street, Manchester

£850 PCM

Set alongside the Rochdale Canal, this Grade II* listed mill conversion offers a rare opportunity to enjoy characterful city living in one of Manchester's most enduring and popular developments. Victoria Mill is a landmark building with a proud past, thoughtfully converted to provide comfortable, spacious homes that retain the authenticity and scale of the original architecture.

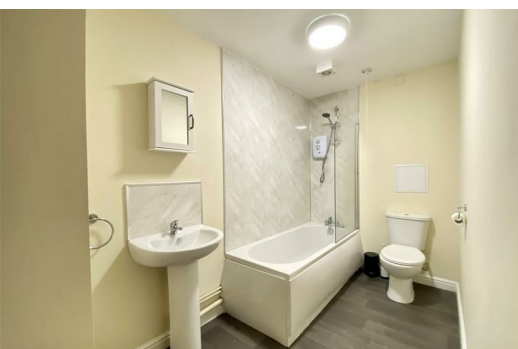
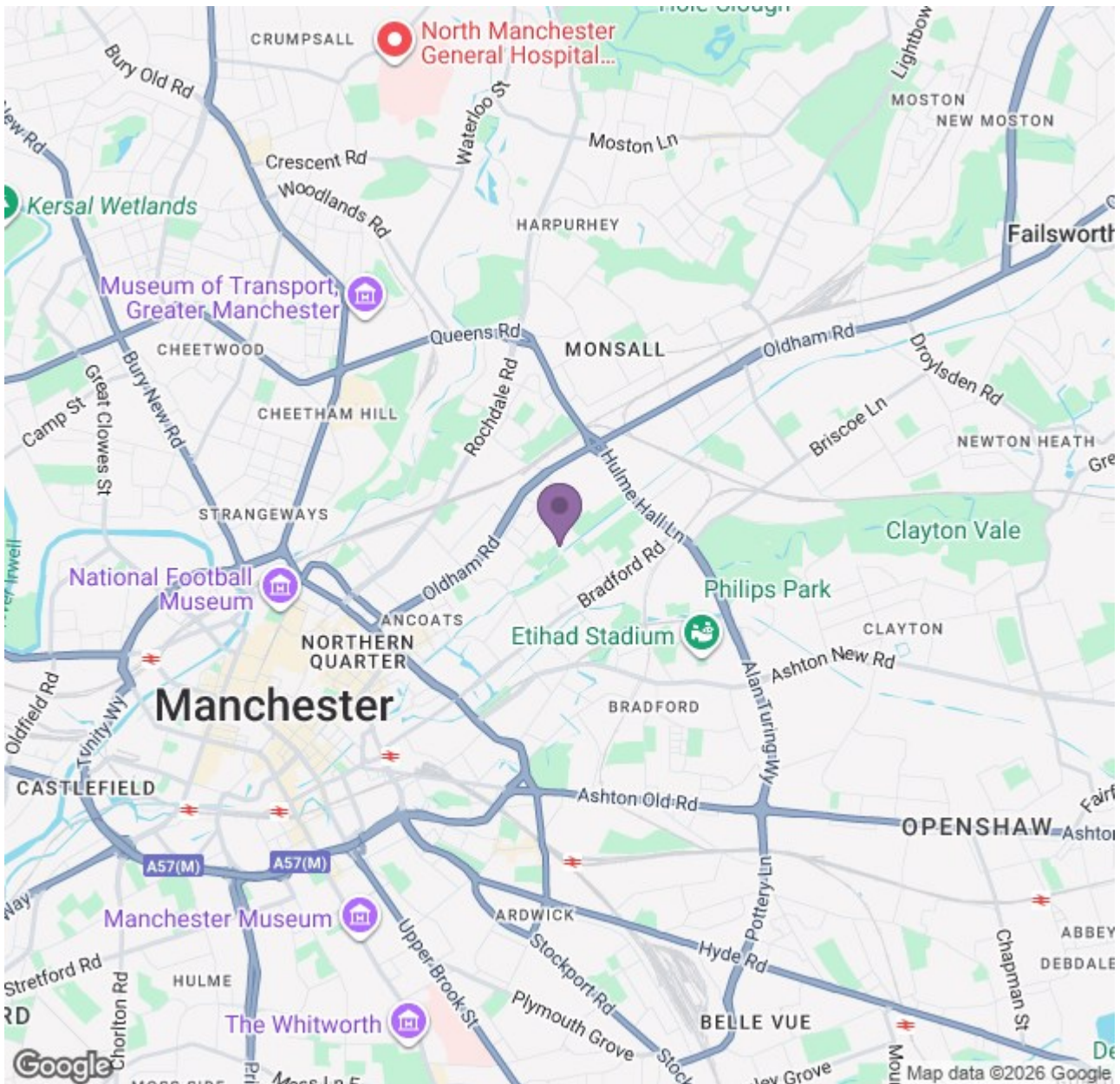
This one-bedroom apartment offers generous proportions throughout, with well-sized rooms and a practical layout that suits modern living. Large mill-style windows allow plenty of natural light, while the solid construction and established setting give the apartment a reassuring sense of permanence and calm.

Victoria Mill is highly regarded for its location and connectivity. The city centre is within easy walking distance, with the Northern Quarter just a pleasant canal-side stroll away. Excellent transport links, nearby green spaces and local amenities make this a convenient and well-balanced place to live.

A home with history, space and character, in a proven and well-loved development, ideal for those seeking something a little different from the ordinary city apartment.

If you're interested in having a closer look, or have any questions, do get in touch. And just so you know, the pictures for this apartment are for marketing purposes only, so the internal fixtures, fittings and furnishings may vary.





Energy Efficiency Rating			Environmental Impact (CO ₂) Rating		
Rating	Score	Band	Rating	Score	Band
A	92	A	A	10	A
B	81	B	B	20	B
C	69	C	C	30	C
D	55	D	D	40	D
E	41	E	E	50	E
F	29	F	F	60	F
G	15	G	G	70	G