



Vie Building, Water Street, Manchester  
Offers In Excess Of £220,000

**Ascend**  
Built on higher standards



# Vie Building, Water Street, Manchester

Welcome to the Vie Building, an exquisite modern apartment located on Water Street in the vibrant city of Manchester. This stylish residence, built in 2006, offers a perfect blend of contemporary living and urban convenience.

Upon entering, you'll find a spacious reception room that serves as the heart of the home, ideal for both relaxation and entertaining guests. The apartment also benefits from a good-sized balcony with views over the River Irwell, providing the perfect spot to unwind and enjoy the surroundings. The property boasts two well-appointed bedrooms, offering ample space for rest and privacy.

Situated in a prime location, the Vie Building is surrounded by a range of amenities, including shops, restaurants, and cultural attractions, perfect for those who appreciate the dynamic lifestyle Manchester has to offer.

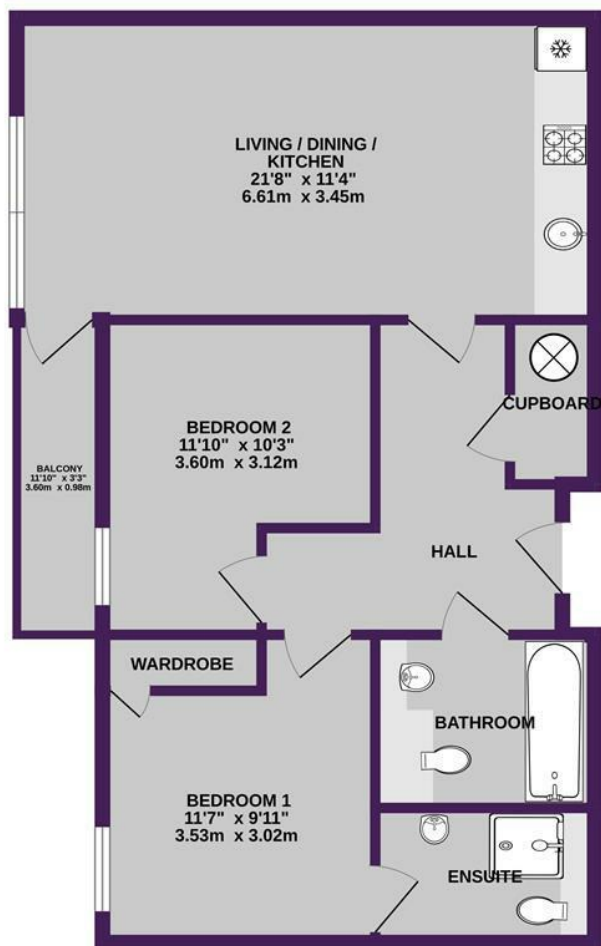
This apartment is ideal for professionals, couples, or small families seeking a modern living space in a thriving urban environment. Don't miss the opportunity to make this exceptional property your new home.

Service Charge: £3016pa  
Ground Rent: £270pa



Please note that we have not tested any apparatus, equipment, fixtures, fittings or services, and so cannot verify they are in working order or fit for their purpose. Furthermore solicitors should confirm moveable items described in the sales particulars are, in fact, included in the sale since circumstances do change during marketing or negotiations. A final inspection prior to exchange of contracts is also recommended. Although we try to ensure accuracy, measurements used in this brochure may be approximate. Therefore if intending purchasers need accurate measurements to order carpeting or to ensure existing furniture will fit, they should take such measurements themselves.

GROUND FLOOR  
670 sq.ft. (62.3 sq.m.) approx.



TOTAL FLOOR AREA : 670 sq.ft. (62.3 sq.m.) approx.

Whilst every attempt has been made to ensure the accuracy of the floorplan contained here, measurements of doors, windows, rooms and any other items are approximate and no responsibility is taken for any error, omission or mis-statement. This plan is for illustrative purposes only and should be used as such by any prospective purchaser. The services, systems and appliances shown have not been tested and no guarantee as to their operability or efficiency can be given.  
Made with Metropix ©2025

