

6 Burton Place, Manchester, Lancashire, M15 4PT  
Tel: 0161 637 8336  
Email: [contactus@ascendproperties.com](mailto:contactus@ascendproperties.com)  
[www.ascendproperties.com](http://www.ascendproperties.com)

# Ascend

Built on higher standards



Canal Walk, Burnley, BB12

£1,245 PCM

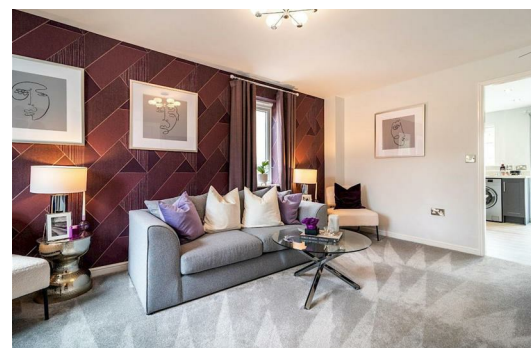
Discover Canal Walk, an exquisite semi-rural development of 2, 3, and 4 bedroom homes in the charming village of Hapton, alongside the scenic Leeds Liverpool Canal.

Indulge in the rich ambience of Burnley Market, offering fresh produce and diverse cuisine. Surrounded by idyllic countryside, Canal Walk offers a serene setting for your new home, all whilst enjoying the convenience of Hapton train station (just a two-minute walk away!) and local amenities. Plus, Burnley General Hospital is only a short drive away.

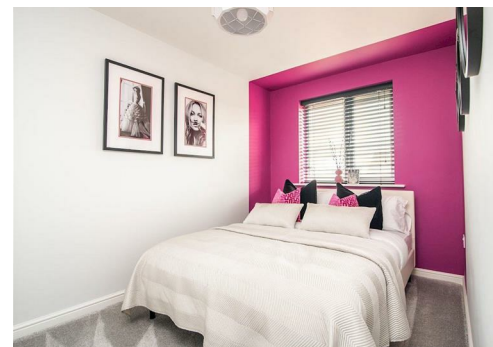
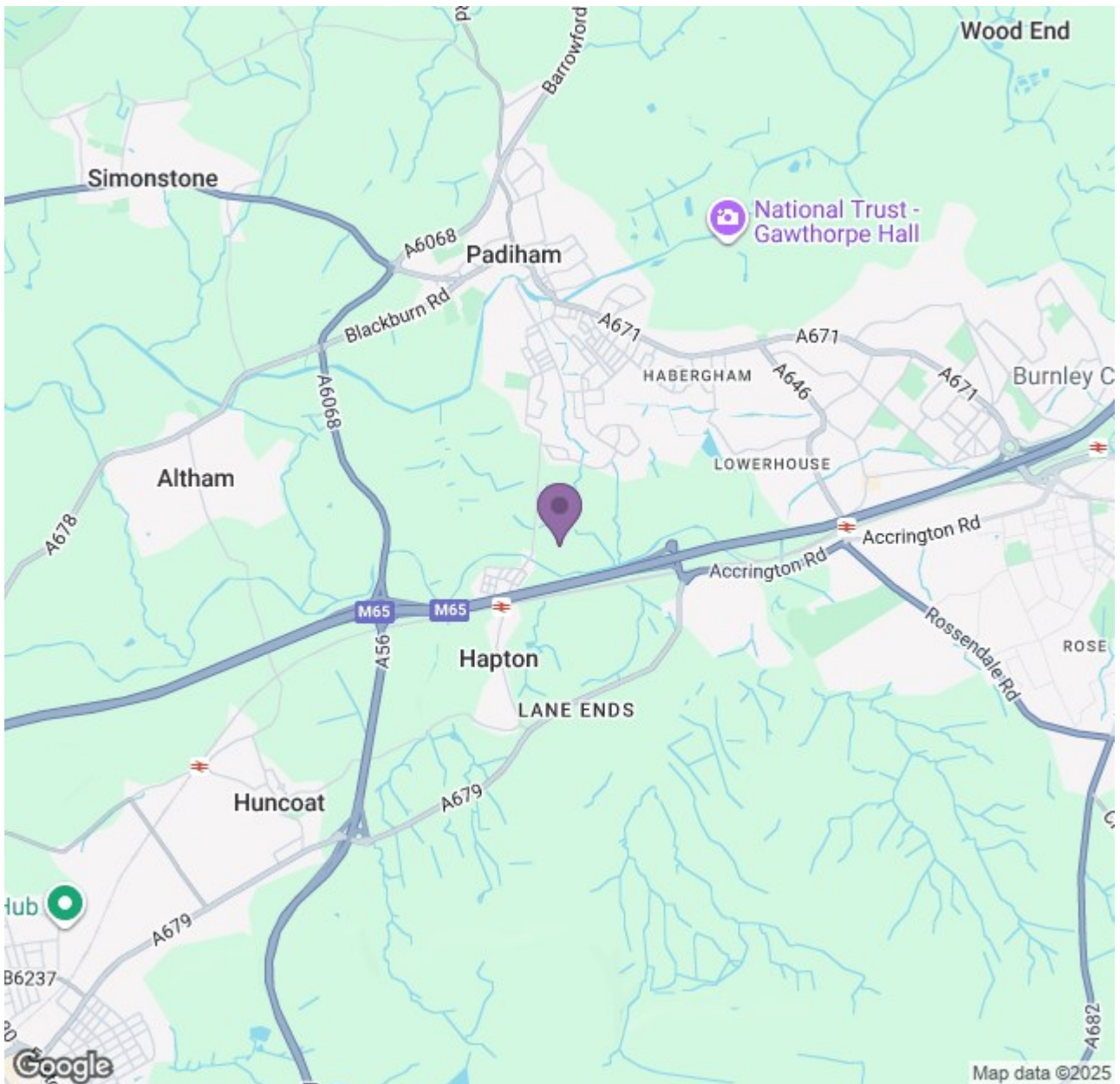
We proudly present The Lisburn, an exquisite three bedroom semi-detached house that harmoniously blends style and functionality. This stunning property is available for rent, offering a truly exceptional living experience.

Step inside and be greeted by a bright and inviting living room, creating a welcoming atmosphere - the perfect place for a night in! The contemporary open-plan kitchen-diner awaits, providing an ideal space for cooking up a storm and sharing meals with the family. Open the French doors and be captivated by the seamless flow between the indoor and outdoor areas as you step out onto the charming garden. Convenience is key, as this home features a handy cloakroom on the ground floor, catering to your everyday needs.

A beautiful master bedroom awaits upstairs, offering a serene sanctuary for a good night's rest. Two additional well-appointed bedrooms provide ample space for family members, guests or a home office. The family bathroom is finished with Porcelanosa tiling, adding a touch of luxury to your daily routines.







Energy Efficiency Rating		Environmental Impact (CO <sub>2</sub> ) Rating	
Rating	Score	Rating	Score
A	92	A	92
B	84	B	84
C	72	C	72
D	62	D	62
E	52	E	52
F	42	F	42
G	32	G	32