

6 Burton Place, Manchester, Lancashire, M15 4PT
Tel: 0161 637 8336
Email: contactus@ascendproperties.com
www.ascendproperties.com

Ascend

Built on higher standards



Bacup Road, Rossendale

£425 PCM

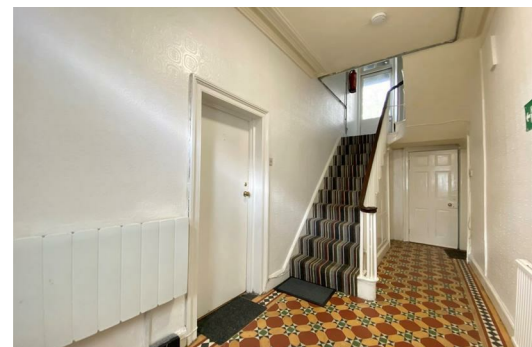
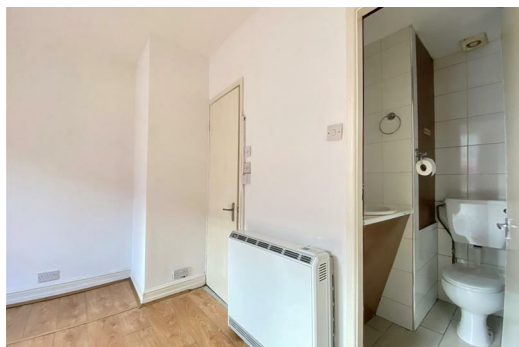
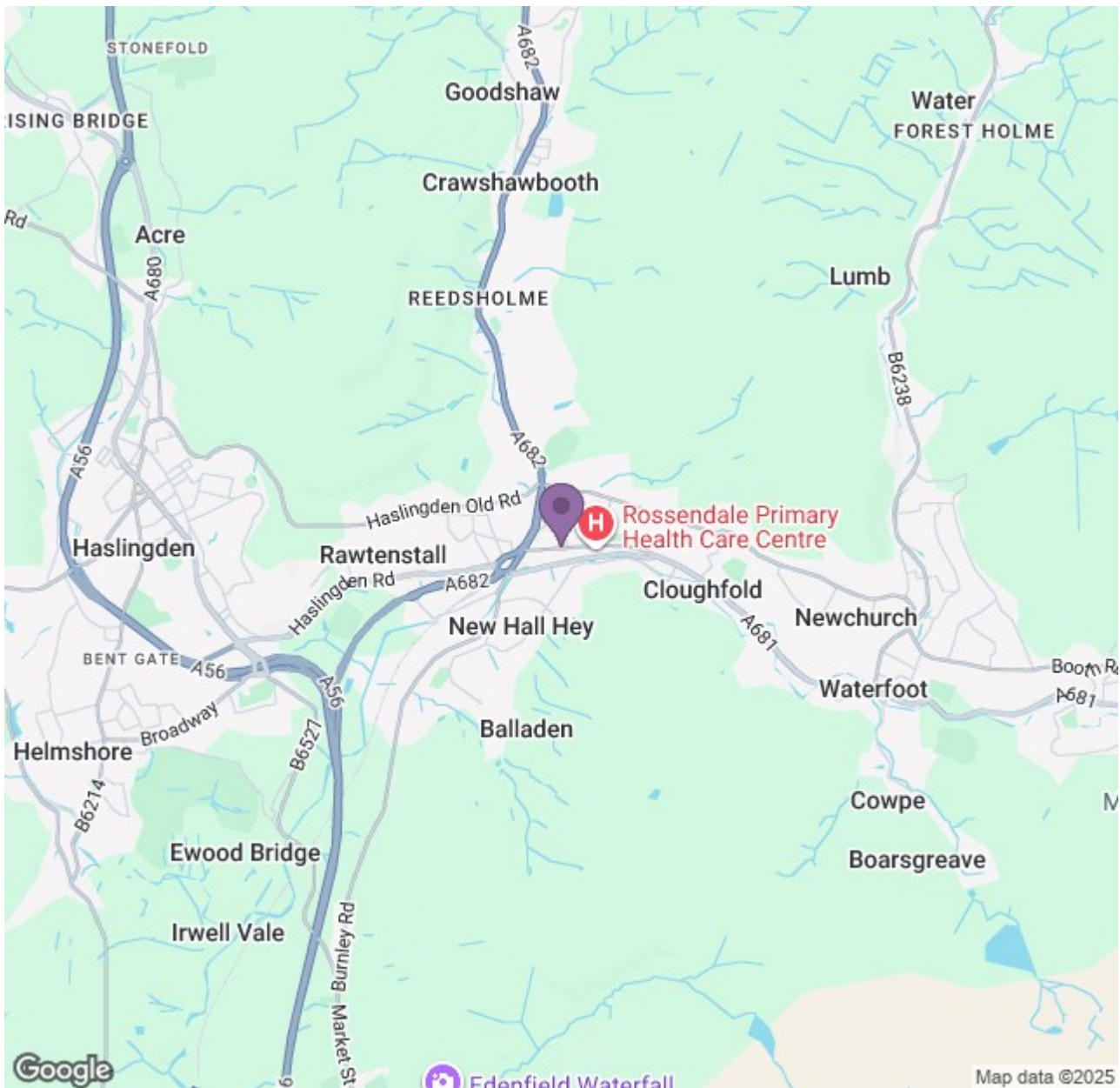
Want to live in the heart of Rossendale? Then you'll love this super cosy STUDIO flat on Bacup Road.

Step inside, and you'll be welcomed into a cosy and warm living/bedroom with a comfortable atmosphere perfect for cuddling up in front of the TV. The kitchen is nice and compact with plenty of worktop space and plenty of natural lighting.

Location wise, this flat is situated in the popular suburb of Rossendale and benefits from an array of local amenities; you'll have a host of retail stores, supermarkets, bars and restaurants right at your fingertips.

Available Now (subject to application and referencing)
Deposit: £490
12 Month Tenancy
Council Tax Band: A





Energy Efficiency Rating				Environmental Impact (CO ₂) Rating			
Rating	Score	Band	Current	Rating	Score	Band	Current
A	92	A		A	10	A	
B	81	B		B	7	B	
C	69	C		C	5	C	
D	55	D		D	3	D	
E	41	E		E	2	E	
F	29	F		F	1	F	
G	15	G		G	0	G	