

6 Burton Place, Manchester, Lancashire, M15 4PT
Tel: 0161 637 8336
Email: contactus@ascendproperties.com
www.ascendproperties.com

Ascend

Built on higher standards



Cambridge Street, Manchester

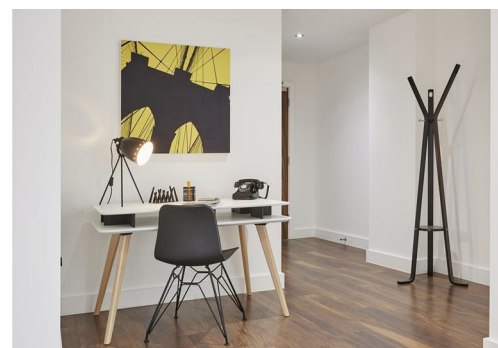
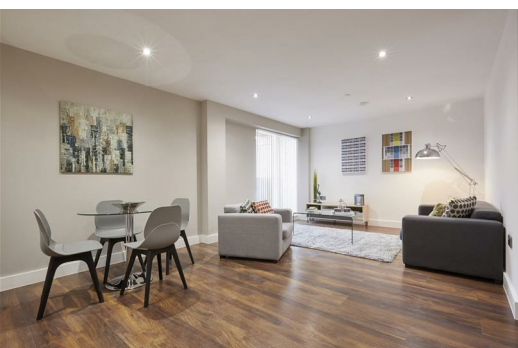
£1,600 PCM

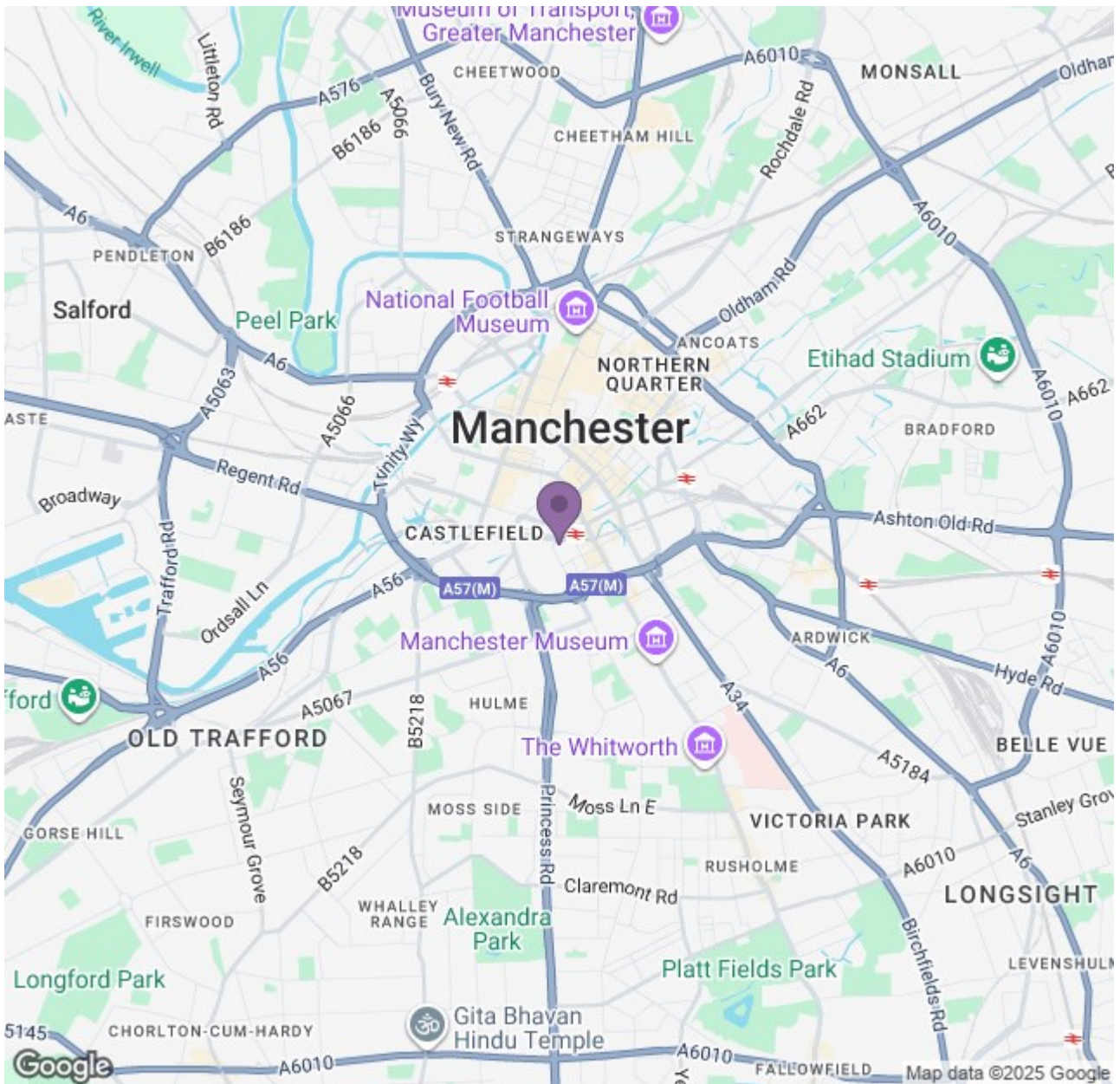
This unique two-bedroom, two-bathroom apartment is located in an exciting modern development right in the heart of Manchester city centre. You're positioned in a highly sought-after and beautiful building, tucked away in a peaceful retreat which is just a stone's throw from all the action.

This ultra-modern and uber-spacious apartment is one of just a small selection of modern buildings highlighted amongst a backdrop of Manchester's historic mill conversions. A stylish force to be reckoned with, these apartments were built with quality in mind. Complete with walnut flooring, a fully-fitted German engineered kitchen and two fully fitted bathrooms with Villeroy and Boch fixtures, the spec must be seen to be appreciated. You'll also benefit from some amazing views out over the whole of Manchester from the comfort of your own balcony - what more could you want from city centre living? Did we also mention the double glazed floor-to-ceiling windows and Hyperoptic fibre broadband installation too?

The location is absolutely spot-on. Just a stone's throw from Whitworth Street and a few minutes' walk to Oxford Road train station, you're perfectly placed for both work and travel. Deansgate, Castlefield and Spinningfields are all just a short stroll away too - you really couldn't be in a better spot.

This property is a definite must-see and as an added bonus, you will also benefit from a 24-hour concierge. If you're interested in having a closer look, or have any questions, do get in touch. And just so you know the pictures are of the show apartment. Internal fixtures and fittings may vary.





Energy Efficiency Rating		Current	Target
Energy Efficiency Rating	Energy Efficiency Rating	81	81
A	A		
B	B		
C	C		
D	D		
E	E		
F	F		
G	G		

Environmental Impact (CO ₂) Rating		Current	Target
Environmental Impact (CO ₂) Rating	Environmental Impact (CO ₂) Rating	81	81
A	A		
B	B		
C	C		
D	D		
E	E		
F	F		
G	G		