



Potato Wharf, Manchester

£1,100 PCM

Love the finer things in life? This gorgeous 7th floor apartment in Castlefield will be right up your street.

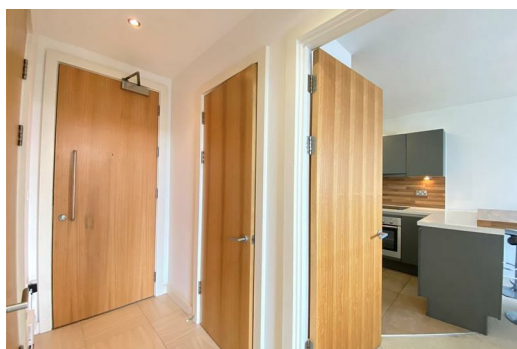
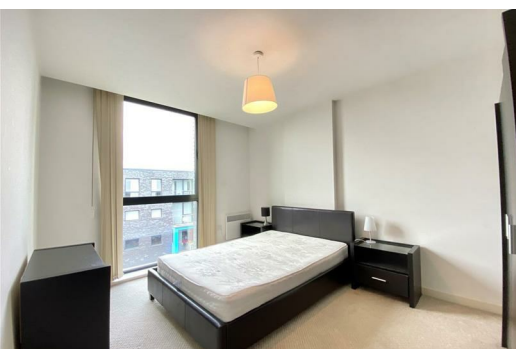
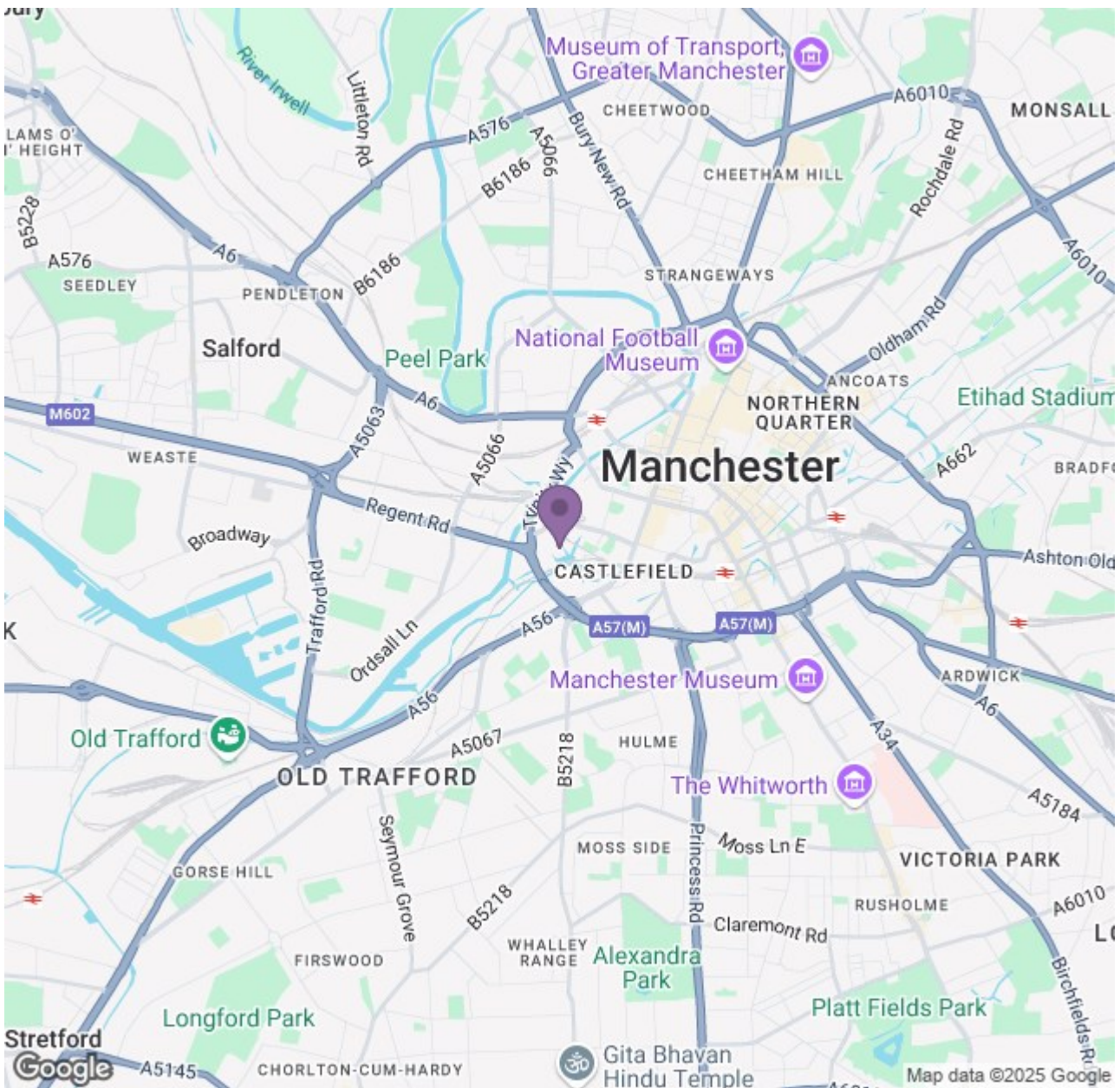
Aside from being a hop, skip and a jump away from the beating heart of Manchester city centre, Castlefield is renowned for its suburban vibe and rustic charm. It has an independent nightlife that rivals the city centre big players and a great social scene with a huge range of bars & restaurants right on the doorstep. You could pretty much delete that little well-known taxi app! Talking of public transport, there's also an abundance of stations and road-links around the immediate area so commuting around the city is a breeze.

Enough about the location - let's talk about the apartment. This modern one-bedroom apartment in Potato Wharf is an absolute belter. Complete with large windows, canal views, ultra high-spec kitchen (think Hans Grohe finishings and you'll know what we're getting at) and a stunning bathroom - you'll be half way to discovering just what a property this is. This apartment is so well presented, you could literally drop your bags and move in.

There aren't many apartments on the market that feature such quality fixtures and fittings so we reckon this won't be around for long. And just so you know, fixtures and fittings are slightly different to the pictures shown.

Available 18th July 2025.
12 month tenancy.
Deposit £1,260.
Council Tax Band C.





Energy Efficiency Rating		Environmental Impact (CO ₂) Rating	
Rating	Score	Rating	Score
A	83	A	67
B	70	B	67
C		C	
D		D	
E		E	
F		F	
G		G	