



Tobacco Factory, Naples Street, Manchester

£995 PCM

Discover the allure of this exquisite 1-bedroom apartment situated within Tobacco Factory on Ludgate Hill. This captivating rustic red brick conversion is thoughtfully furnished and offers an abundance of space.

Upon entering the property, prepare to be captivated by the expansive living and dining area, bathed in an abundance of natural light. The kitchen area offers plenty of storage and features integrated appliances, allowing you to unleash your culinary skills. The bedroom provides ample room for wardrobes, complemented by the grand ceiling heights characteristic of this period property.

If you're looking for somewhere close to everything Manchester city centre has to offer, look no further. You're a 9-min walk from Victoria Train Station and the Printworks, you're just a 13-min walk from the city's hip and vibrant Northern Quarter too. The shops are a 10-min stroll and Spinningfields is 20-minutes.

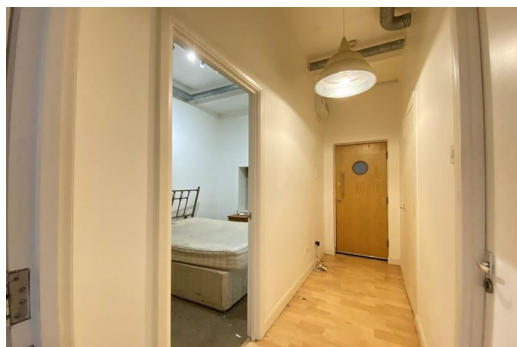
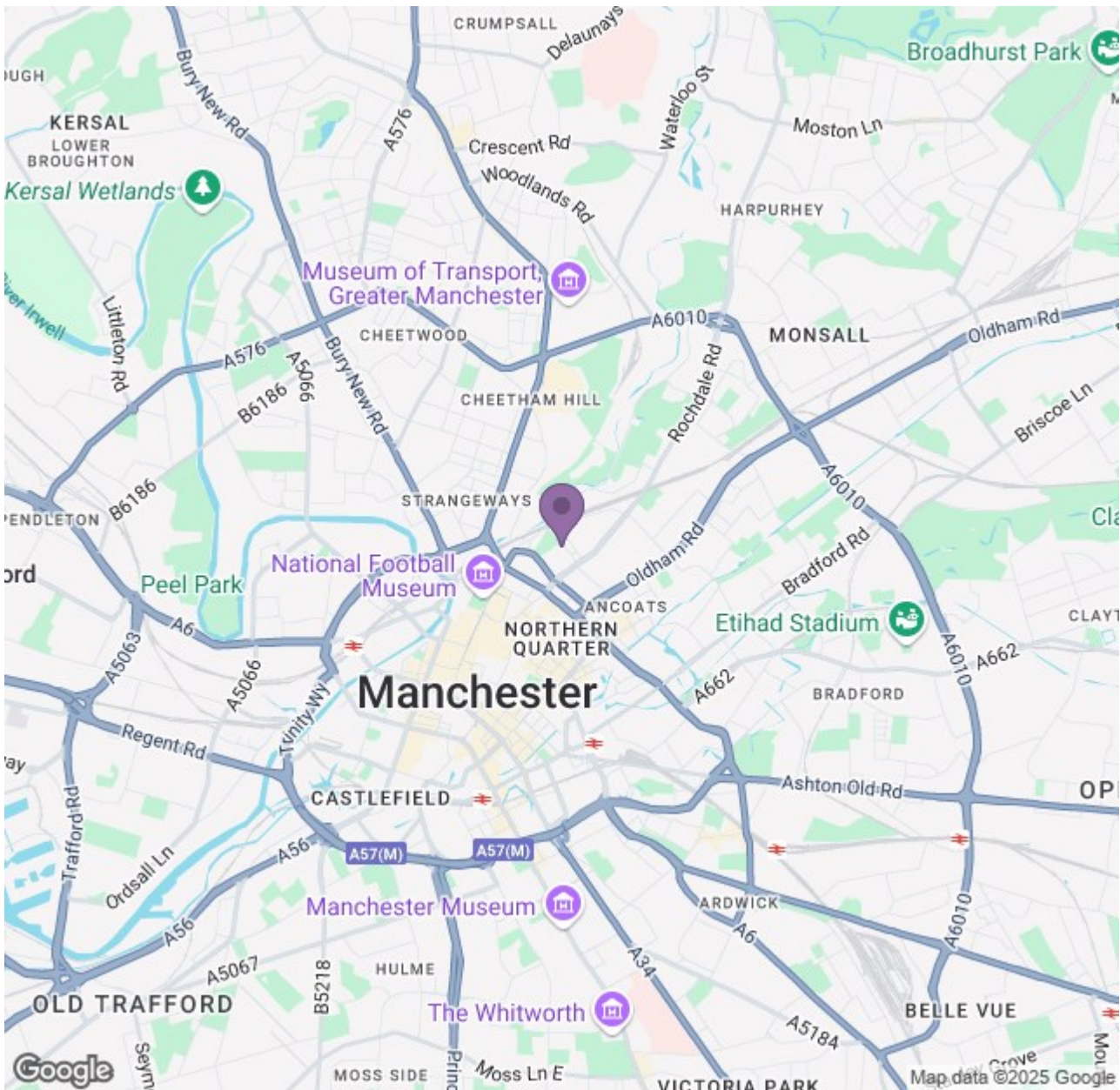
Available 9th July 2025.

Deposit: £1,140.

Council Tax C.

12 month tenancy.





Energy Efficiency Rating		Environmental Impact (CO ₂) Rating	
Rating	Score	Rating	Score
A	92	A	2
B	81	B	3
C	69	C	4
D	55	D	5
E	45	E	6
F	35	F	7
G	21	G	8
		H	9
		I	10