

241 Deansgate, Manchester, Lancashire, M3 4EL
Tel: 0161 637 8336
Email: contactus@ascendproperties.com
www.ascendproperties.com

Ascend

Built on higher standards



Ash Street, Salford

£1,100 PCM

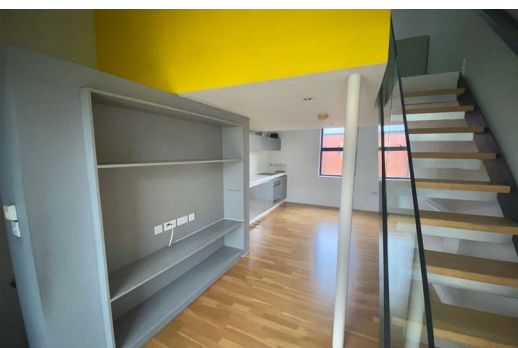
This two bedroom, mid-terrace house has been fully refurbished and is located in a fantastic spot in Salford, just 15 minutes away from Manchester – ideal for anyone travelling into the city centre, MediaCityUK and the surrounding areas.

Boasting a huge amount of space inside, you'll find it incredibly easy to get comfortable in this stylish home. With a generous-sized reception room with original floorboards, a fabulous modern kitchen with appliances and a beautiful newly fitted bathroom, there's not much more you could need. Not to forget, this home comes with a private parking space too.

Along with easy access to the M602/M60 motorways, you'll also have Weaste Metrolink less than a mile away, so you're perfectly connected for work and play. Salford shopping centre is just a 7 minute drive away and has a huge range of amenities on offer, including an Aldi, PureGym, Argos, Home Bargains, Subway, Boots and plenty more. Literally everything you could need is within easy reach.

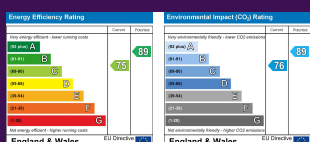
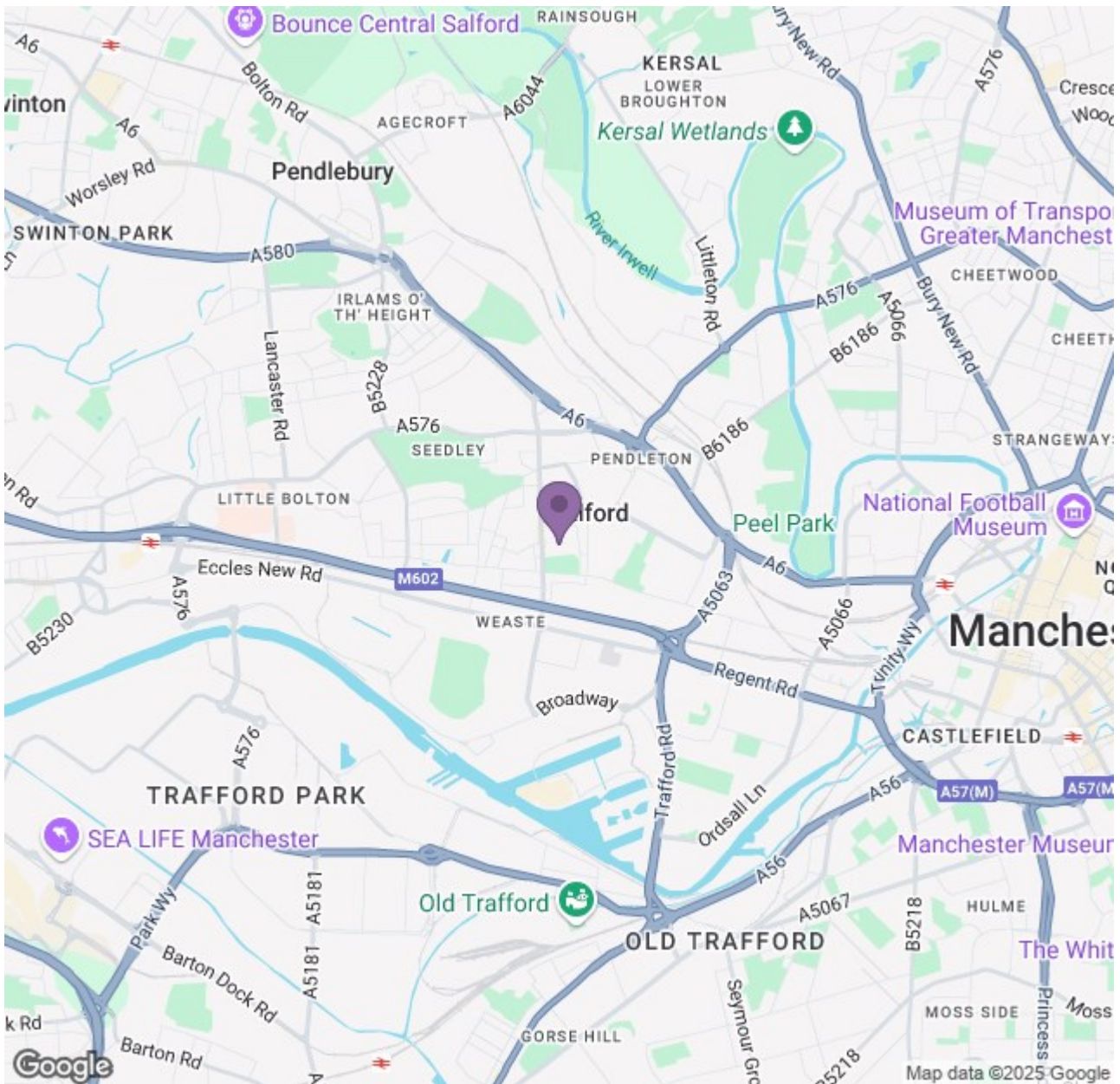
Due to the immaculate presentation and ideal location, we're certain this one won't be around for long, so make sure to get in touch with our team today.

Available 23rd June 2025.
12 month tenancy.
Council Tax Band B.
Deposit £1,260.



Ascend

Built on higher standards



Ascend

Built on higher standards