

The Riley Building, Derwent Street, Manchester, M5 4TA

£1,650 PCM

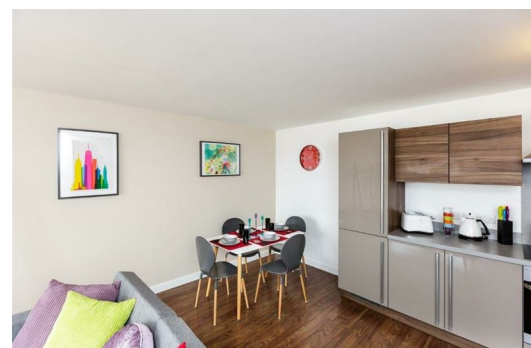
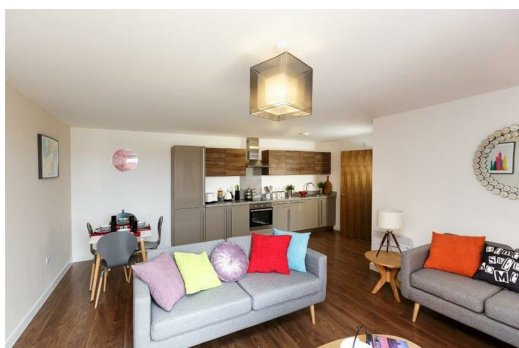
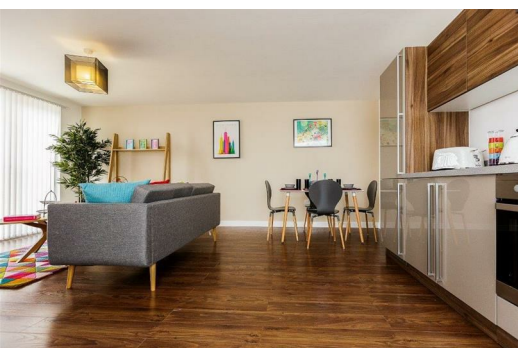
With a cracking location next to the River Irwell and the ship canal, these apartments in Riley Building blend a great splash of style with lovely homely comfort.

Kitted out with modern furnishings, including contemporary sofas, you'll enjoy the ease of an open-plan kitchen/lounge. You won't have to share bathrooms with flatmates either, as there are two of them - a master and an en-suite, each built to shiny standards. This apartment also comes with a secure allocated parking space.

Venture out and you'll find yourself by Castlefield's many canal-side bars which continue along to Deansgate and the locks. There's transport galore too: tram and train stations are close by and there's easy access to the main ring road. If you're feeling a bit more traditional you could hire a canal boat and float through the city. We wouldn't recommend swimming though.

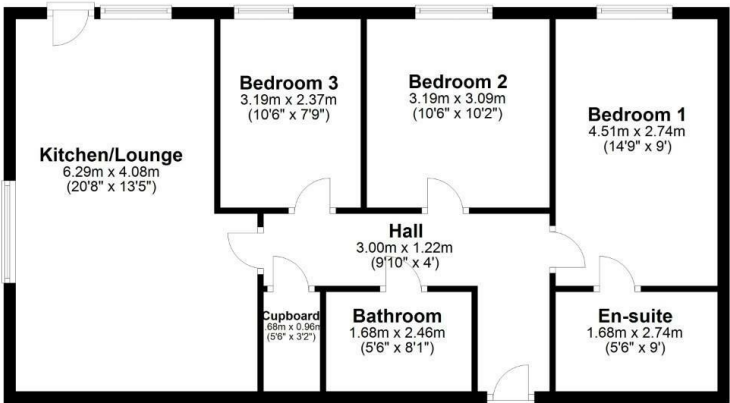
And just so you know, the pictures for this apartment are for marketing purposes only, so the internal fixtures, fittings and furnishings may vary.

Available Now
Council Tax Band B
12 month tenancy
Deposit £1,900



Ground Floor

Approx. 74.6 sq. metres (802.8 sq. feet)



Total area: approx. 74.6 sq. metres (802.8 sq. feet)

For Illustrative Purposes Only, Not to scale.
Plan produced using PlanUp.

7 The Riley, Manchester

