



Fairhope Avenue, Salford

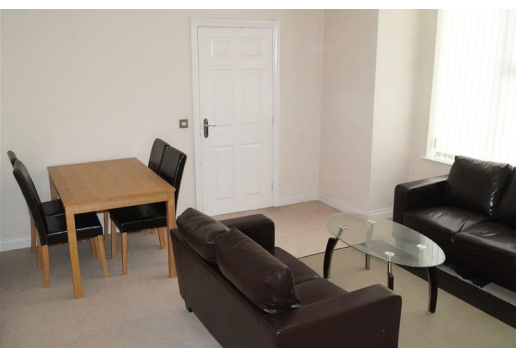
£850 PCM

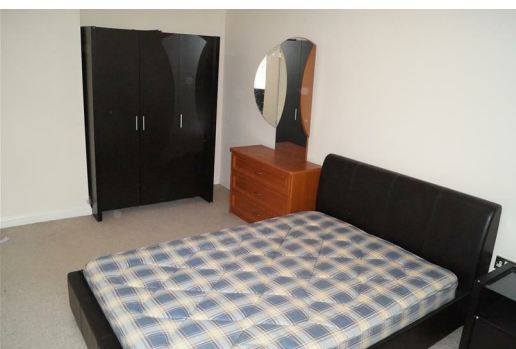
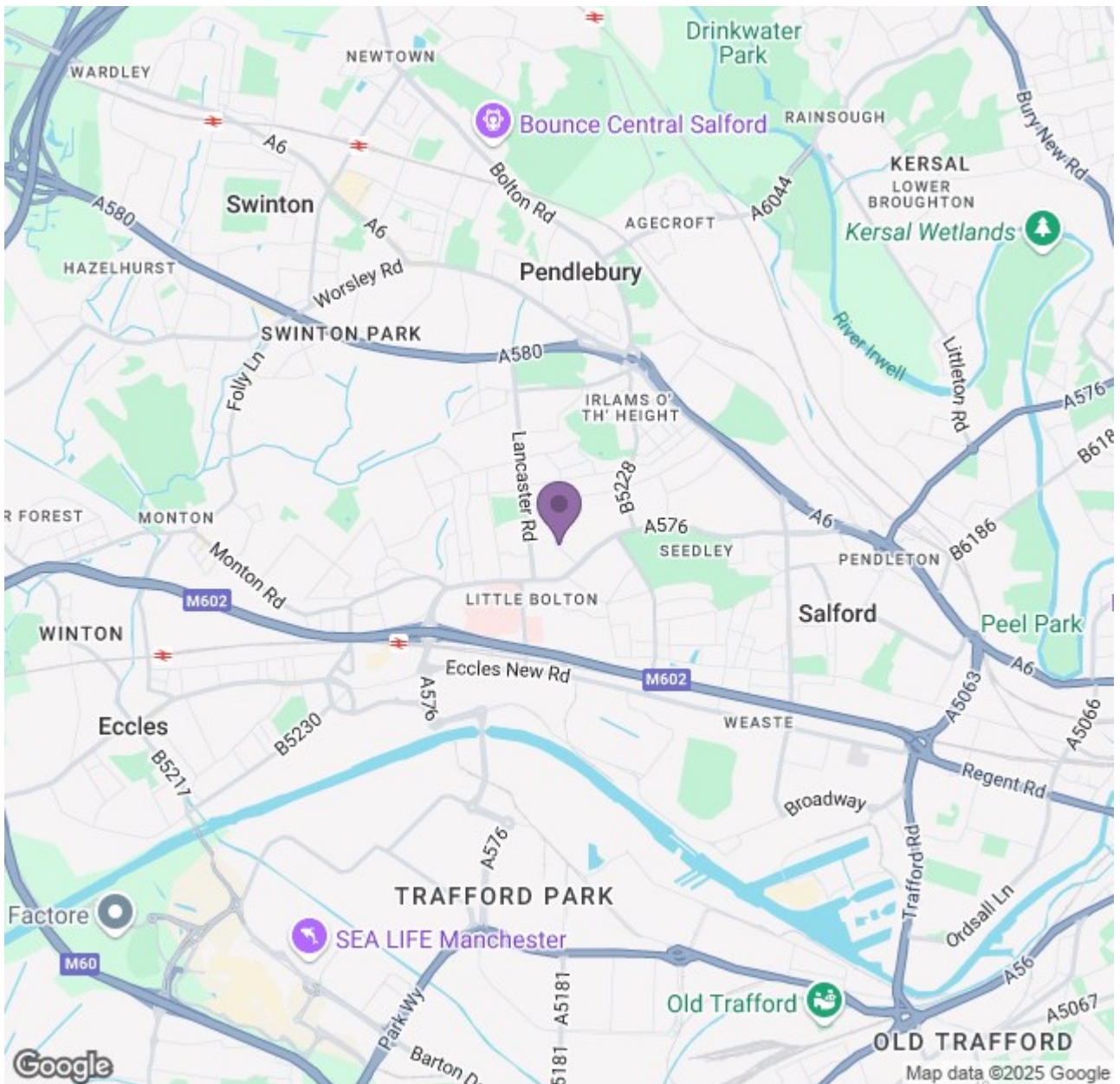
This well-presented and spacious one-bedroom apartment at Fairhope Court in Salford is situated close to Bule Hill Park and just off Eccles Old Road - ideal for working professionals.

Inside this great apartment you'll find a decent sized open-plan living room complete with a smart, modern, fully-fitted kitchen - so there's more than enough space for all your get-togethers, gatherings and lazy Sunday mornings. The double bedroom is equally as bright and spacious and the family bathroom has a lovely modern white finish. There's also plenty of off-road parking around the property - a huge bonus.

Due to the popular location and fantastic price, this apartment won't be available for long, so make sure you book a viewing soon. And just so you know, the pictures for this apartment are for marketing purposes only. The internal fixtures, fittings and furnishings may vary.

Available 16th June 2025
12 Month Minimum Tenancy
Deposit: £980
Council Tax: A





Energy Efficiency Rating			Environmental Impact (CO ₂) Rating		
Band	Score	Rating	Band	Score	Rating
A	92-100	Very Good	A	1-10	Very Low
B	81-91	Good	B	11-20	Low
C	69-80	Fair	C	21-30	Medium
D	55-68	Below Average	D	31-40	Medium-High
E	41-54	Poor	E	41-50	High
F	21-40	Very Poor	F	51-60	Very High
G	1-20	Very Poor	G	61-70	Very High

England & Wales