



## Malvern Grove, Manchester

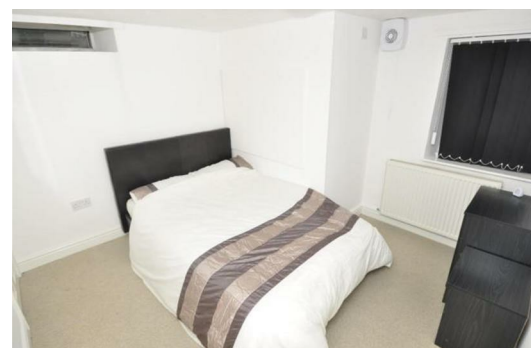
£800 PCM

Smack bang in the heart of one of Manchester's most desirable areas to live, this one bedroom apartment has all the benefits of a leafy suburban abode whilst being in a cracking central location.

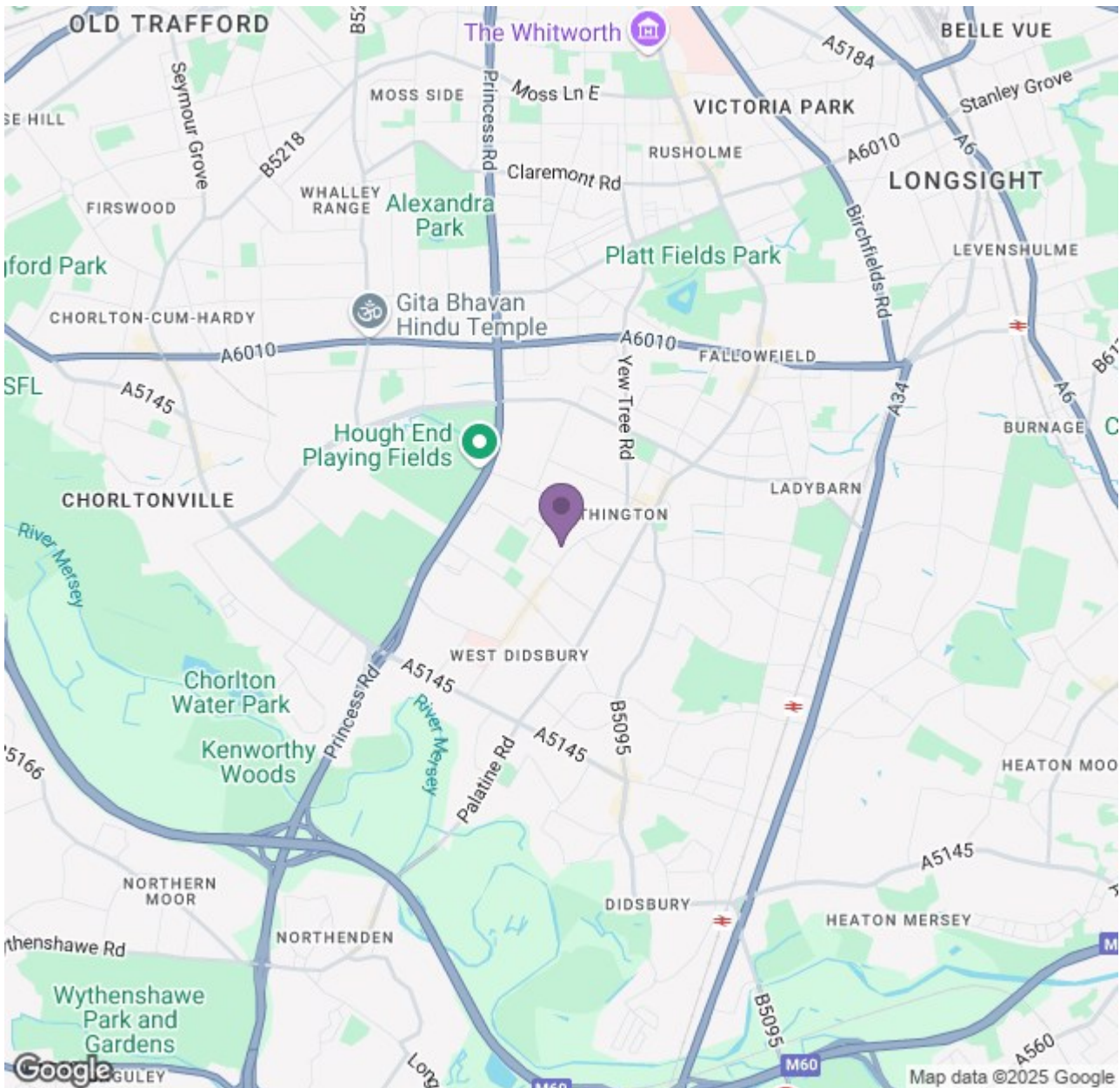
Complete with a spacious living area, fully fitted kitchen, modern bathroom and bedroom, what more could you possibly want from an apartment? Not only will you have your homely comforts, you'll also have top notch bus, rail and Metrolink facilities - the entire Manchester world (and beyond...) is your oyster. The delights of the city centre and its complete awesomeness are a mere few minutes away - as is the airport, if you fancy jetting off to sunnier climates. If you know your hotspots, you'll know that properties in locations like this don't get much better.

This apartment won't be on the market for long so if you're interested in having a closer look, or have any questions, do get in touch. And just so you know, the pictures for this apartment are for marketing purposes only. The internal fixtures, fittings and furnishings may vary.

Available 16th July 2025.  
12 month tenancy.  
Council Tax Band A.  
Deposit £920.







Energy Efficiency Rating			Environmental Impact (CO <sub>2</sub> ) Rating		
Rating	Score	Band	Rating	Score	Band
A	92	A	A	69	A
B	81	B	B	55	B
C	69	C	C	41	C
D	55	D	D	27	D
E	41	E	E	13	E
F	27	F	F	0	F
G	13	G	G	-13	G

England & Wales