



Potato Wharf, Manchester

£1,350 PCM

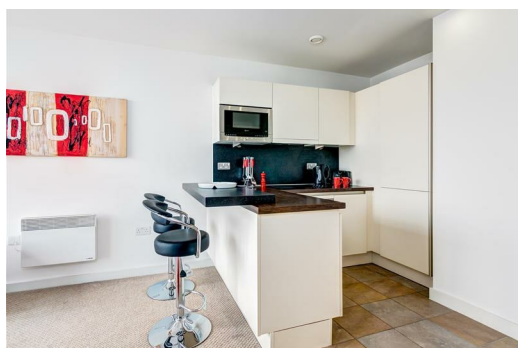
Love the finer things in life? This gorgeous apartment in Castlefield will be right up your street.

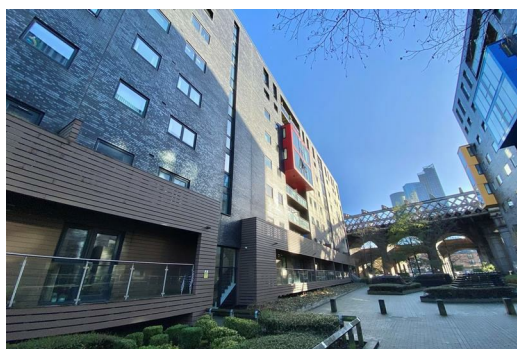
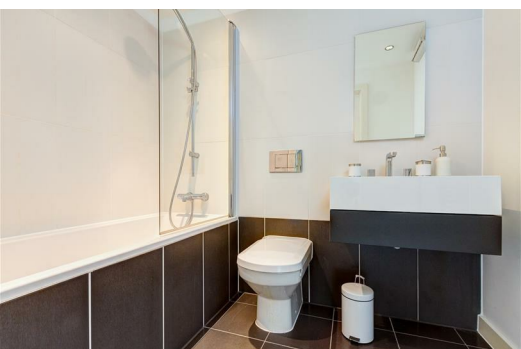
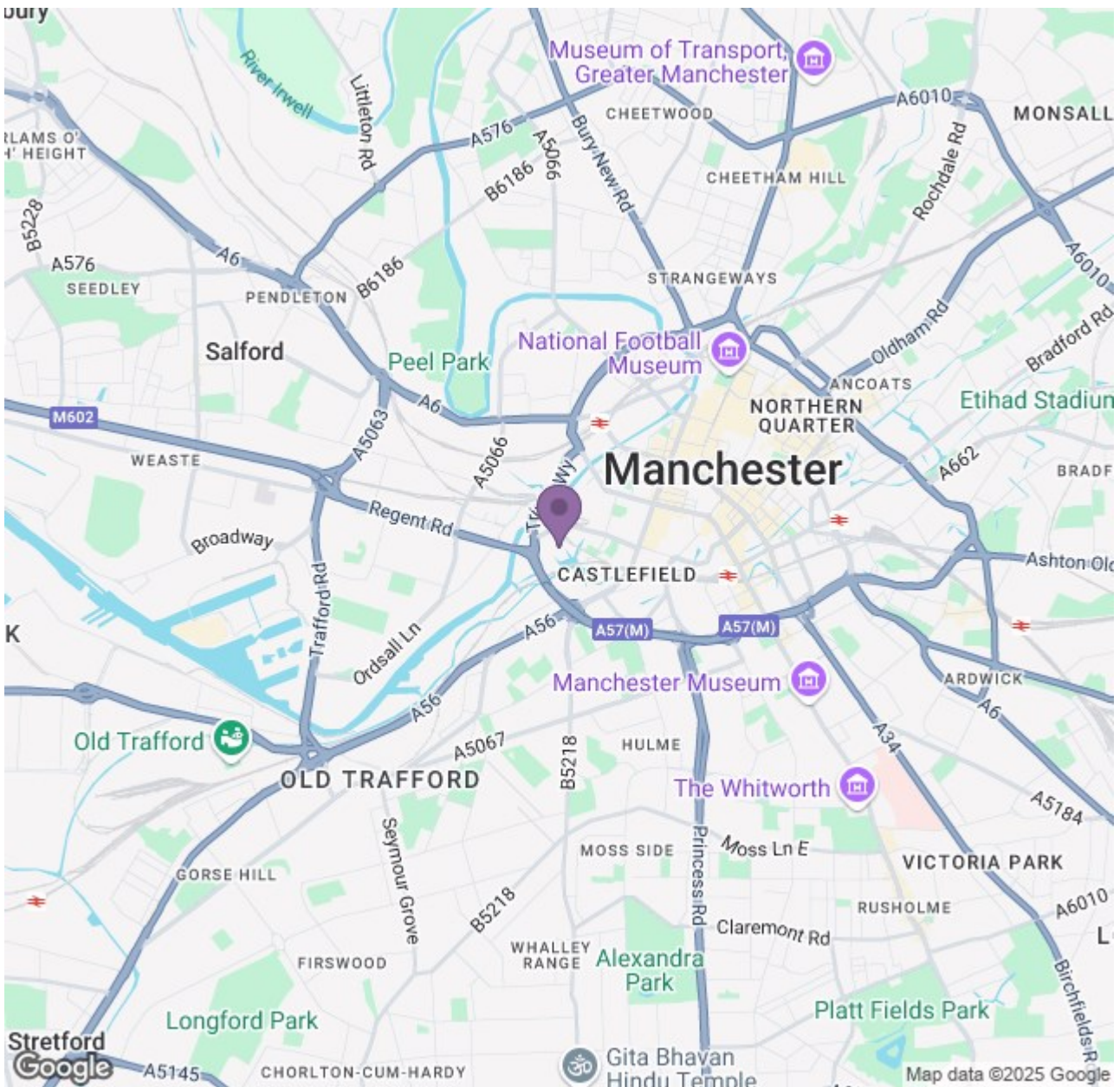
Aside from being a hop, skip and a jump away from the beating heart of Manchester city centre, Castlefield is renowned for its suburban vibe and rustic charm. It has an independent nightlife that rivals the city centre big players and a great social scene with a huge range of bars & restaurants right on the doorstep. You could pretty much delete that little well-known taxi app! Talking of public transport, there's also an abundance of stations and road-links around the immediate area so commuting around the city is a breeze.

Enough about the location - let's talk about the apartment. This modern two bedroom apartment in Potato Wharf is an absolute belter. Complete with floor-to-ceiling windows, canal views, ultra high-spec kitchens and not one, but two bathrooms - you'll be half way to discovering just what a property this is. This apartment is so well presented, you could literally drop your bags and move in.

Images are for marketing purposes only so the internal fixtures, fittings and furnishings may vary.

Available 2nd June 2025.
12 Month Tenancy
Deposit: £1550
Council Tax: C





Energy Efficiency Rating			Environmental Impact (CO ₂) Rating		
Rating	Score	Band	Rating	Score	Band
A	92-100	A	A	1-10	A
B	81-91	B	B	11-20	B
C	69-80	C	C	21-30	C
D	55-68	D	D	31-40	D
E	46-54	E	E	41-50	E
F	39-45	F	F	51-60	F
G	34-38	G	G	61-70	G