

241 Deansgate, Manchester, Lancashire, M3 4EL  
Tel: 0161 637 8336  
Email: [contactus@ascendproperties.com](mailto:contactus@ascendproperties.com)  
[www.ascendproperties.com](http://www.ascendproperties.com)

# Ascend

Built on higher standards



Alto Building, Sillavan Way, Salford

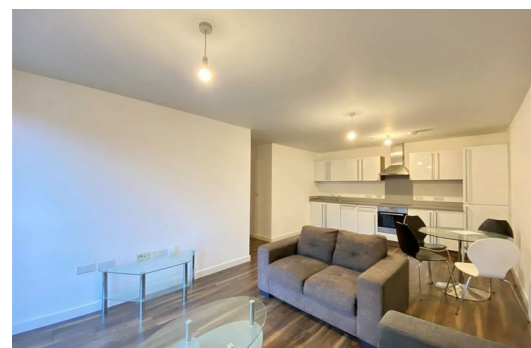
£1,200 PCM

Welcome to Alto: a popular residential development nestled in the nook of the River Irwell. Step inside and you'll see this lovely two bedroom apartment, with a contemporary design that stays bright under the sunny skies of Manchester.

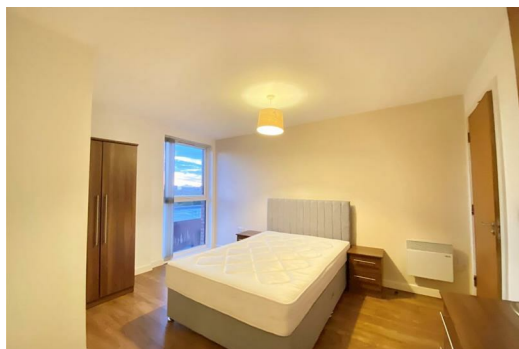
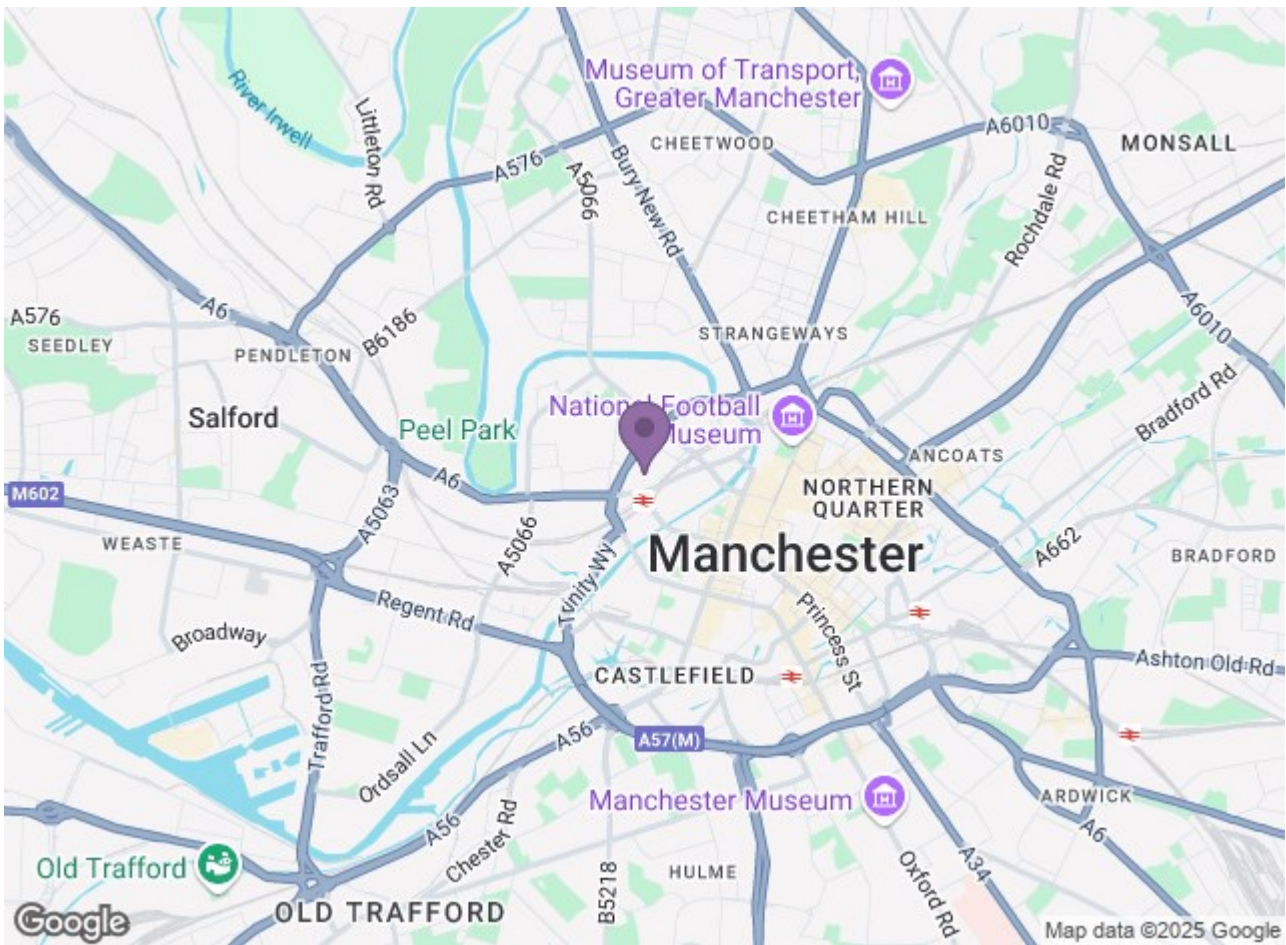
You'll have the comfort of high-quality fixtures and fittings including Villeroy & Boch sanitary ware, and the open-plan Kitchen/Lounge has plenty of space for all your get-togethers, gatherings, shindigs and lazy Sundays. There's a large master bathroom, and for those who like a bit more privacy, there's an ensuite in one of the rooms too - so no early-morning queues. Just down the road are Spinningfields' swanky bars and shops, and beyond that is the city centre itself.

If you're interested in having a closer look, or have any questions, do get in touch. And just so you know, the pictures for this apartment are for marketing purposes only. The internal fixtures, fittings and furnishings may vary.

Available 14th May 2025  
Council Tax Band D.  
Deposit £1,380.  
12 month tenancy.







Energy Efficiency Rating		Environmental Impact (CO <sub>2</sub> ) Rating	
Current	Potential	Current	Potential
81	86	80	80
Energy Efficiency Rating Legend		Environmental Impact (CO <sub>2</sub> ) Rating Legend	
A (Green)		A (Green)	
B (Yellow)		B (Yellow)	
C (Orange)		C (Orange)	
D (Red)		D (Red)	
E (Dark Red)		E (Dark Red)	
F (Dark Red)		F (Dark Red)	
G (Dark Red)		G (Dark Red)	