



Lower Vickers Street, Manchester  
Offers In Excess Of £75,000

**Ascend**  
Built on higher standards

# Lower Vickers Street, Manchester

CASH BUYERS - It's not often you can live in a Grade II\* listed building - but with this Victoria Mill flat in Miles Platting, now is your chance.

Perched next to the Rochdale Canal and at the centre of a district that was once the beating, spinning, smoking heart of Manchester's industrial revolution, Victoria Mill is a proud emblem for the city's hard-working history.

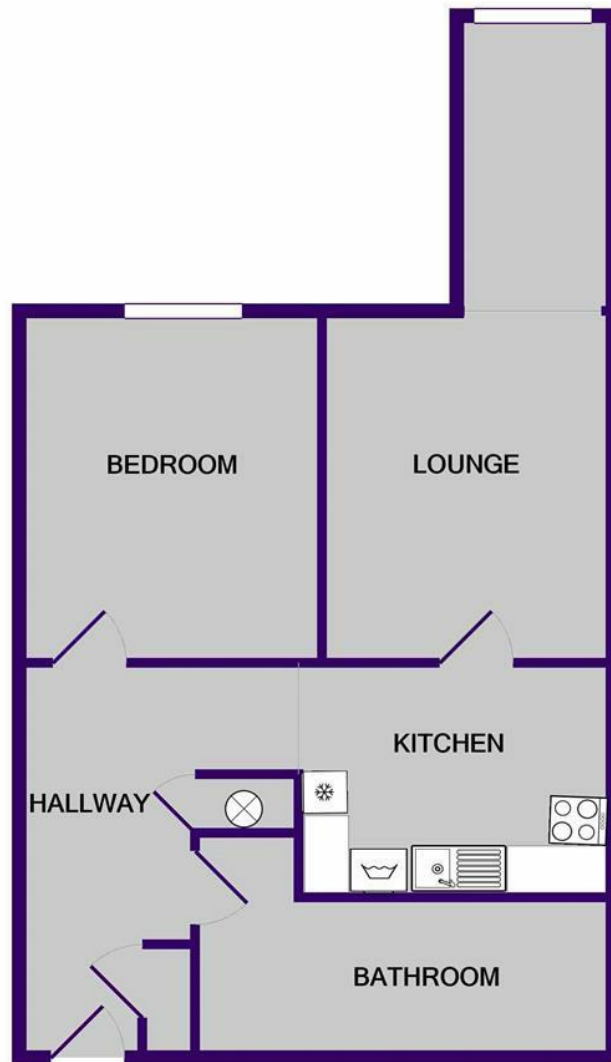
If you're interested in having a closer look, or have any questions, do get in touch. And just so you know, the pictures for this apartment are for marketing purposes only, so the internal fixtures, fittings, carpeting and furnishings may vary.

This property is currently tenanted on a fixed term agreement at £775pcm (May 2025).

LEASEHOLD  
Ground rent: £375  
Service charge: Approx. £1900pa  
Lease: 125 Years, Commencing January 2014  
Council Tax: A



Please note that we have not tested any apparatus, equipment, fixtures, fittings or services, and so cannot verify they are in working order or fit for their purpose. Furthermore solicitors should confirm moveable items described in the sales particulars are, in fact, included in the sale since circumstances do change during marketing or negotiations. A final inspection prior to exchange of contracts is also recommended. Although we try to ensure accuracy, measurements used in this brochure may be approximate. Therefore if intending purchasers need accurate measurements to order carpeting or to ensure existing furniture will fit, they should take such measurements themselves.



Whilst every attempt has been made to ensure the accuracy of the floor plan contained here, measurements of doors, windows, rooms and any other items are approximate and no responsibility is taken for any error, omission, or mis-statement. This plan is for illustrative purposes only and should be used as such by any prospective purchaser. The services, systems and appliances shown have not been tested and no guarantee as to their operability or efficiency can be given  
Made with Metropix ©2020

