

241 Deansgate, Manchester, Lancashire, M3 4EL
Tel: 0161 637 8336
Email: contactus@ascendproperties.com
www.ascendproperties.com

Ascend

Built on higher standards



Elizabeth Tower, Silvercroft Street, Manchester

£1,350 PCM

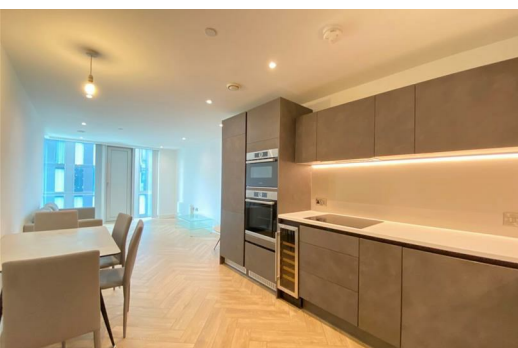
This luxury one-bedroom apartment is located at the gateway of Manchester city centre in one of the city's most in-demand addresses. With just a short walk to Deansgate and Spinningfields, there's everything you could ever need right on your doorstep. The apartment is a LUX meaning more sq ft than your standard two-bedroom apartment

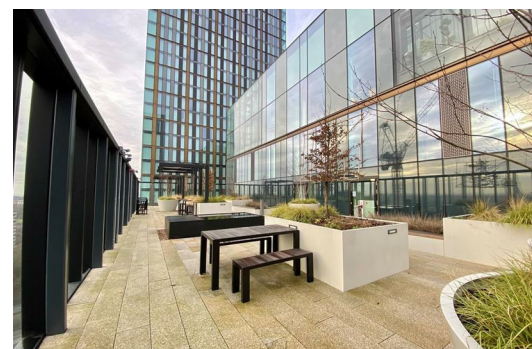
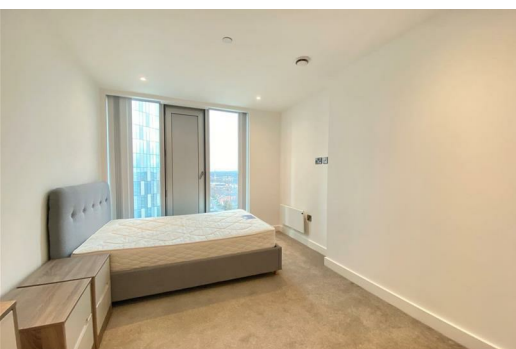
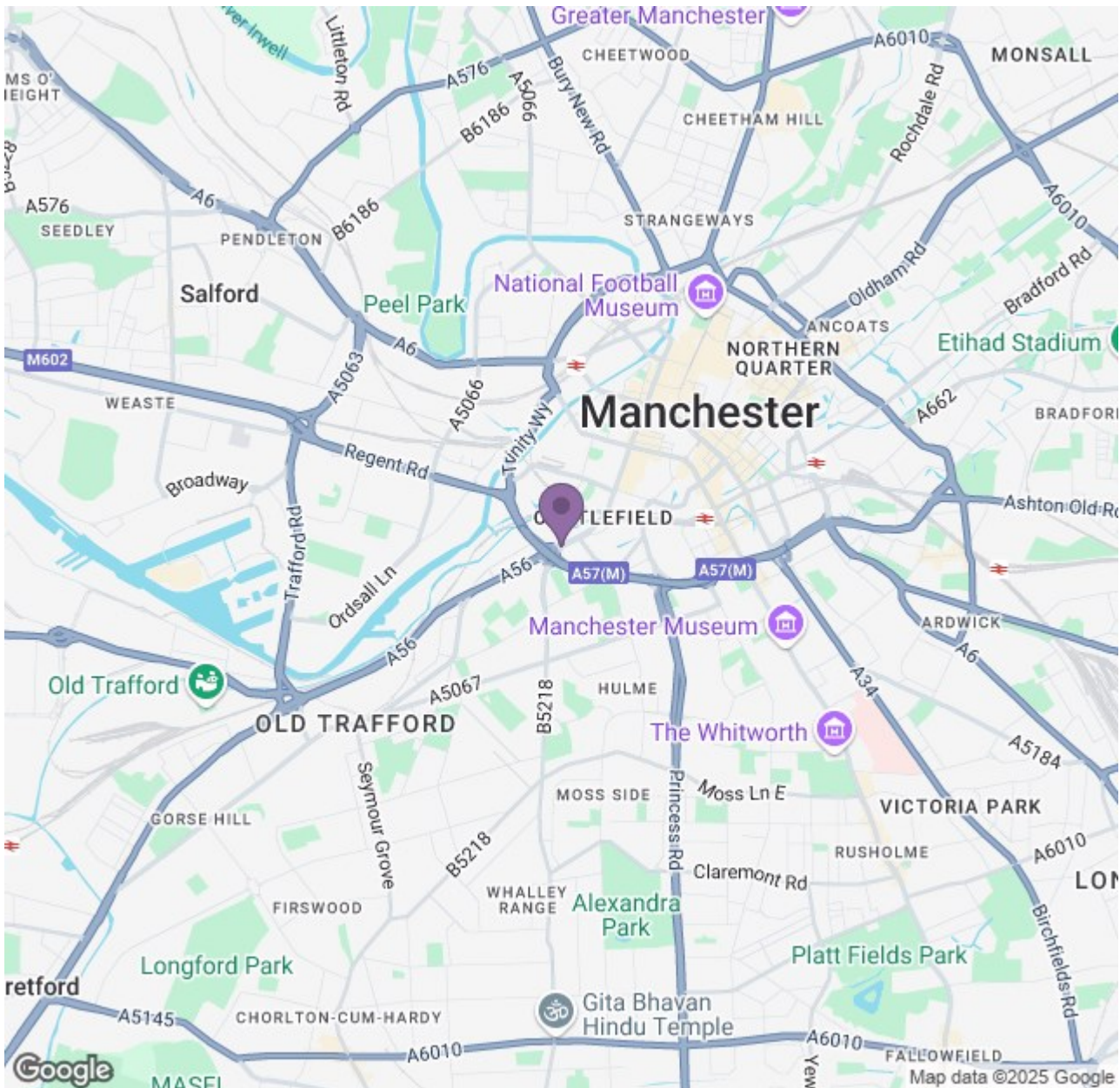
The high-end apartment is in a 52-storey skyline, offering inspiring views across the city. Each room is finished to the highest standard, with a stylish open plan kitchen/living area that's great for entertaining, a dazzling double bedroom, and a master bathroom.

You'll also have access to the breath-taking 44th floor swimming pool (one of the highest in Western Europe!), Royal Garden and gymnasium as well as a communal hub, residents lounge and co-working space.

With its elegant interiors, amazing facilities and fantastic location, this apartment is guaranteed not to be on the market for long. If you are interested in having a closer look or have any questions, don't hesitate to get in touch. Marketing images have been used for this advertisement, so fixtures and fittings may vary.

Available Now (Subject to referencing)
Council Tax Band C.
12 month tenancy.
Deposit £1550





Energy Efficiency Rating		Environmental Impact (CO ₂) Rating	
Band	Score	Band	Score
A	89-92	A	1-2
B	81-88	B	3-4
C	69-80	C	5-6
D	55-68	D	7-8
E	39-54	E	9-10
F	21-38	F	11-12
G	1-20	G	13-14

England & Wales