



The Mews, Advent Way, Manchester

£1,250 PCM

Situated in a stylish development close to New Islington Marina, this two bedroom apartment is perfectly placed to reach everything the city centre has to offer.

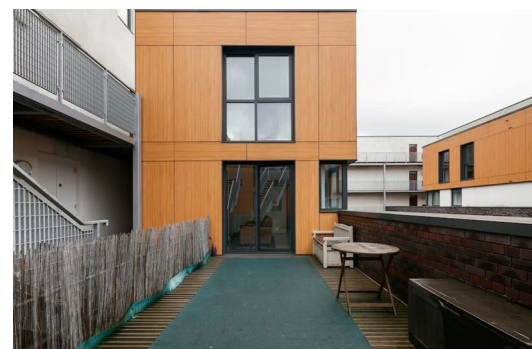
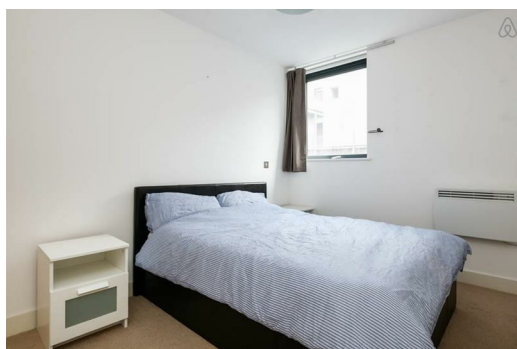
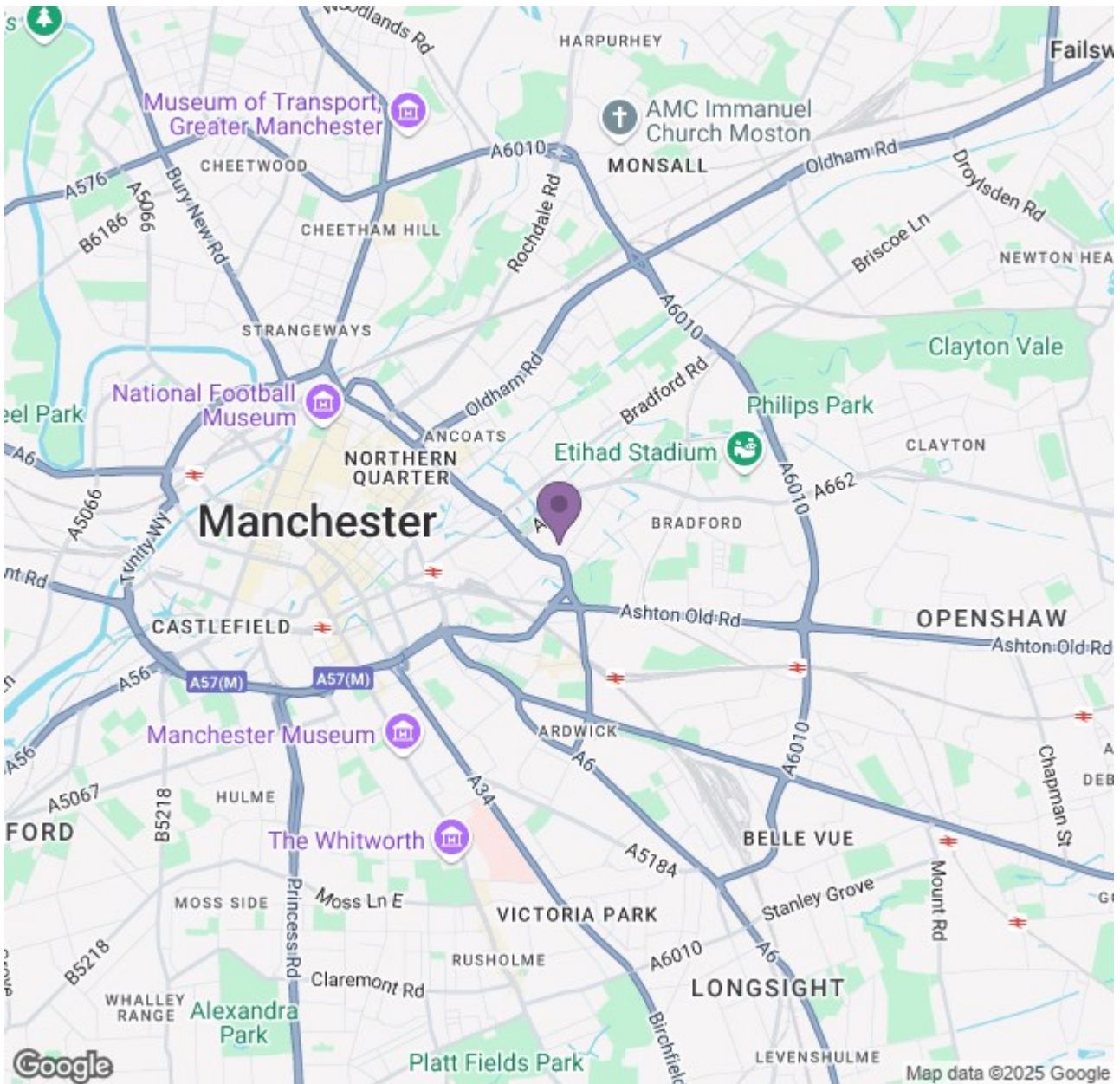
One of the main selling points is the uber-trendy lounge which opens up through glass doors onto your very own private terrace - the ideal place for relaxing with friends or enjoying the fresh air in the summer. Back inside your swanky apartment you'll also find a sleek kitchen which is separate from the lounge - a huge rarity with city centre apartments. In both bathrooms you'll find a fresh, neutral tiled design throughout, complete with high spec fittings. In the bedrooms, you'll find plenty of space and an abundance of natural light.

You're still in the perfect location to reach everything you need though. Just a 5 minute walk away will take you to the New Islington tram stop, so you can hop straight into the city centre with no fuss. Alternatively, Manchester Piccadilly train station is just a 10 minute stroll away if you fancy a short walk. To top it off, there's a Retail Park close by, along with a Costa just 3 minutes away - so you can pick yourself up a cuppa before work. Everything you could possibly need is within easy reach - making this the perfect city pad.

If you're interested in having a closer look, or have any questions, do get in touch. And just so you know, the pictures for this apartment are for marketing purposes only. The internal fixtures, fittings and furnishings may vary.

Available Now (Subject to referencing)





Energy Efficiency Rating			Environmental Impact (CO ₂) Rating		
Rating	Score	Band	Rating	Score	Band
A	92	A	A	47	A
B	81	B	B	44	B
C	69	C	C	41	C
D	55	D	D	38	D
E	41	E	E	35	E
F	27	F	F	32	F
G	13	G	G	29	G