



Macintosh Mills, Cambridge Street, Manchester

£1,800 PCM

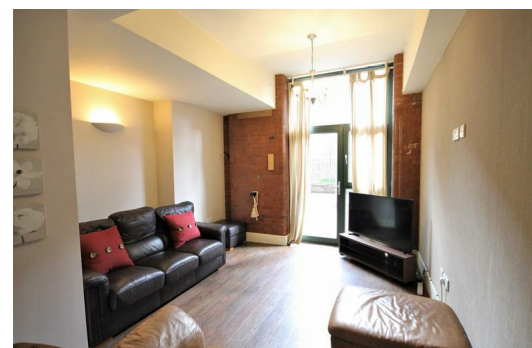
Ascend are delighted to offer for rent this fully furnished three double-bedroom apartment that comes complete with two bathrooms and two outside patio areas. Situated on the lower ground floor of Macintosh Mills is this charming apartment full of space and character with high ceilings and exposed brickwork to the majority of rooms.

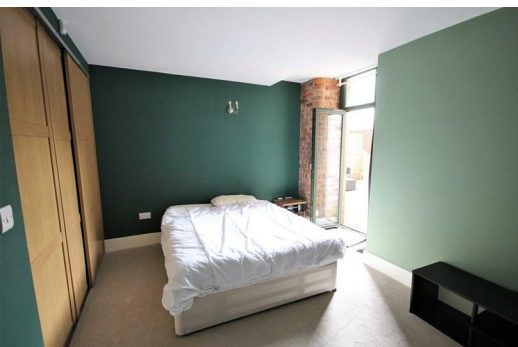
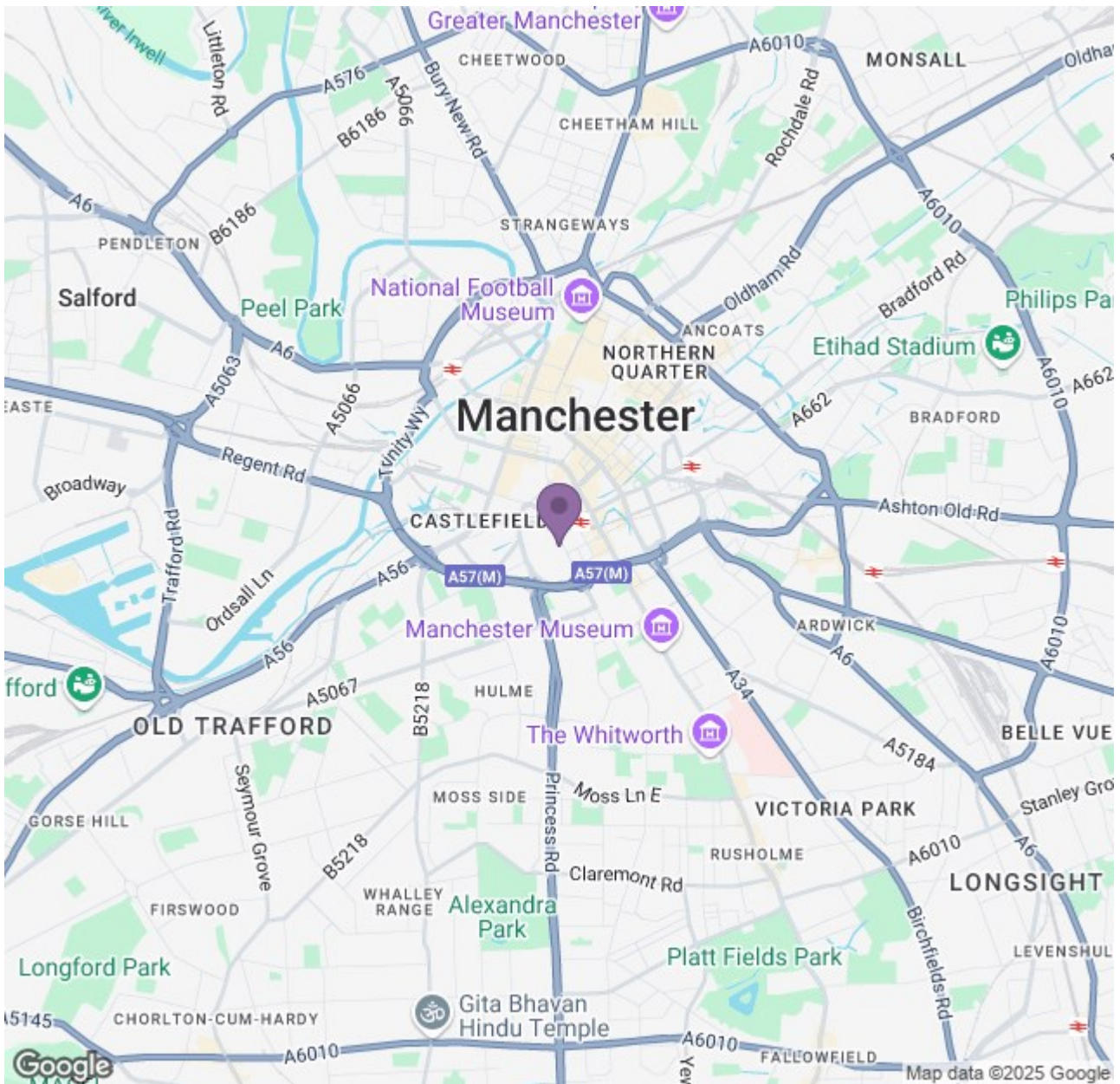
Venture through the front door and first up is the open plan living area. There is a fully fitted kitchen with integrated appliances, including that much-needed dishwasher, a dining area and a lounge which provides access to the first of the two patio areas. A fenced off area, used only by the occupants of No.14, this is a great additional space to socialise in. Just off the kitchen is a storage cupboard, and a utility room with a washing machine in it.

All three bedrooms are double in size, with two of the bedrooms leading out onto the second of the two patio areas, another great space to utilise in the spring and summer seasons. The master bedroom also comes with the additional benefit of an ensuite shower room. All bedrooms have built in wardrobes. There is also a main bathroom, comprising bath, walk-in shower, WC and hand basin, as well as shelving for storage and underfloor heating.

The location is also spot on! Macintosh Mills is situated in central Manchester, just a stones throw from Oxford Road and nearby a number of great amenities. You are within a 5 minute walk of Oxford Road train station, and 10 minutes walk to Deansgate-Castlefield Tram stop and Deansgate train station. It is also easily accessible to the motorway network for anyone travelling further afield.

Although a parking space doesn't come with this property, there are a number of local car parks that you can obtain season tickets at a reasonable rate should you require it.





Energy Efficiency Rating		Environmental Impact (CO ₂) Rating	
Rating	Score	Rating	Score
A	92	A	10
B	81	B	9
C	69	C	8
D	55	D	7
E	45	E	6
F	35	F	5
G	21	G	4