



1 Cambridge Street, Manchester
Asking Price £210,000

Ascend
Built on higher standards

1 Cambridge Street, Manchester

This unique one bedroom, one bathroom apartment is located in an exciting new development right in the heart of Manchester city centre. Located on the eighth floor, you're positioned in a highly sought-after and beautiful building, tucked away in a peaceful retreat which is just a stone's throw from all the action.

This recently built, ultra-modern and uber-spacious apartment is one of just a small selection of modern buildings highlighted amongst a backdrop of Manchester's historic mill conversions. A stylish force to be reckoned with, these apartments were built with quality in mind. Complete with walnut flooring, a fully-fitted kitchen and two fully fitted bathrooms. You'll also benefit from some amazing views out over the whole of Manchester from the comfort of your own balcony - what more could you want from city centre living? Did we also mention the double glazed floor-to-ceiling windows.

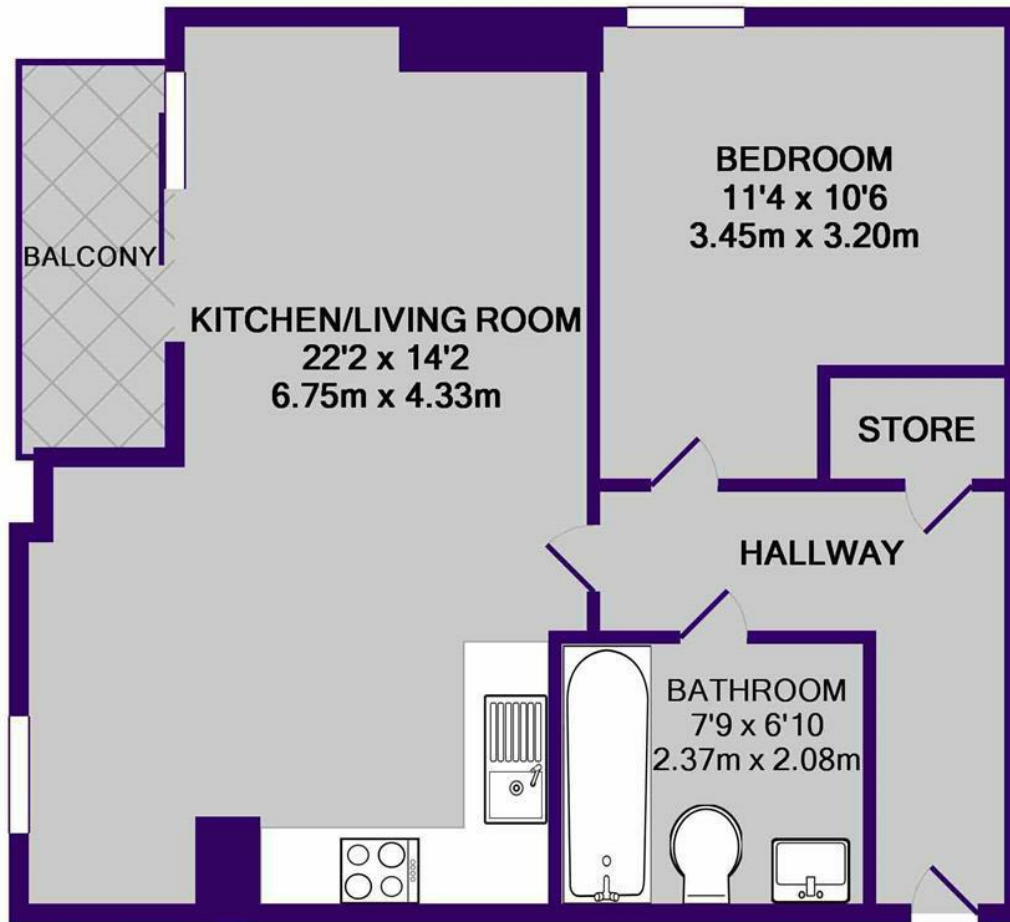
The location is absolutely spot-on. Just a stone's throw from Whitworth Street and a few minutes' walk to Oxford Road train station, you're perfectly placed for both work and travel. Deansgate, Castlefield and Spinningfields are all just a short stroll away too - you really couldn't be in a better spot.

This property is a definite must-see and as an added bonus, you will also benefit from a 24-hour concierge. If you're interested in having a closer look, or have any questions, do get in touch. And just so you know the pictures are of the show apartment. Internal fixtures and fittings may vary.

Please Note, photos are for marketing purposes. Images may vary from apartment



Please note that we have not tested any apparatus, equipment, fixtures, fittings or services, and so cannot verify they are in working order or fit for their purpose. Furthermore solicitors should confirm moveable items described in the sales particulars are, in fact, included in the sale since circumstances do change during marketing or negotiations. A final inspection prior to exchange of contracts is also recommended. Although we try to ensure accuracy, measurements used in this brochure may be approximate. Therefore if intending purchasers need accurate measurements to order carpeting or to ensure existing furniture will fit, they should take such measurements themselves.



TOTAL APPROX. FLOOR AREA 520 SQ.FT. (48.3 SQ.M.)

Whilst every attempt has been made to ensure the accuracy of the floor plan contained here, measurements of doors, windows, rooms and any other items are approximate and no responsibility is taken for any error, omission, or mis-statement. This plan is for illustrative purposes only and should be used as such by any prospective purchaser. The services, systems and appliances shown have not been tested and no guarantee as to their operability or efficiency can be given

Made with Metropix ©2017

