



## The Hub, Piccadilly Place, Manchester

£1,250 PCM

Ascend Properties are delighted to present this stunning one bedroom apartment, perfectly situated on the edge of the Northern Quarter and Piccadilly.

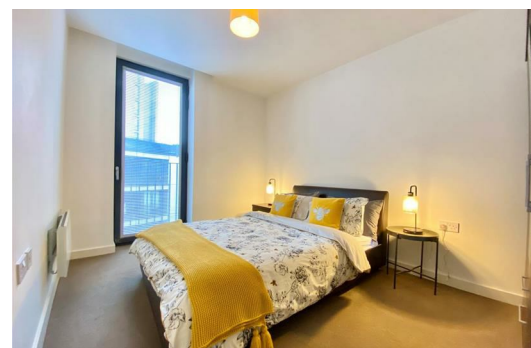
Take a step inside the apartment and you'll discover a wealth of beautifully presented and spacious accommodation, designed to the highest specification. Complete with a modern fitted kitchen, bathroom and a spacious double bedroom.

You'll also benefit from secure allocated parking and access to a communal roof terrace/garden with stunning city views toward Piccadilly.

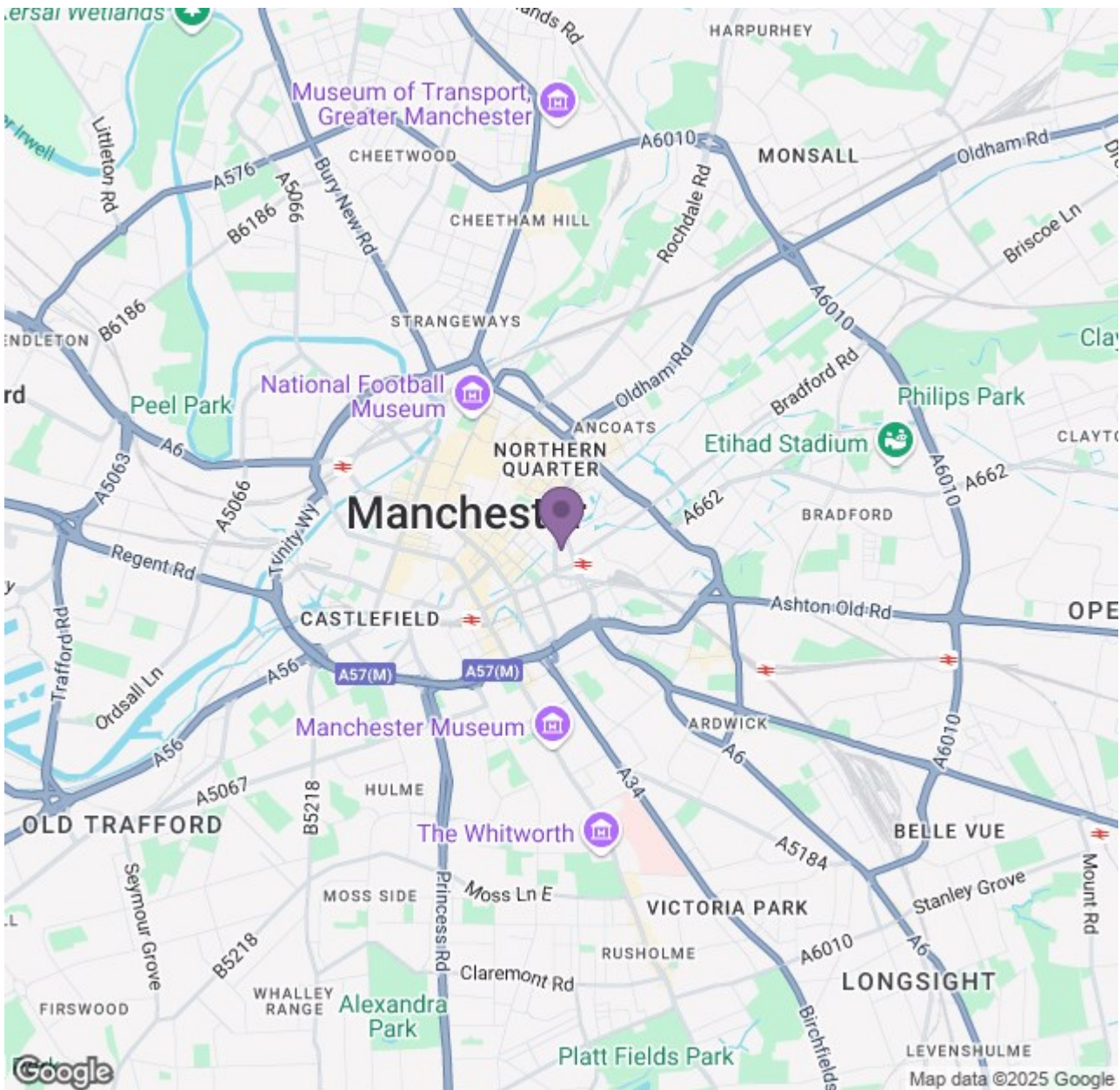
As for location, you couldn't find a more perfect spot. With the ever-popular Northern Quarter as your local haunt, you'll have easy access to a huge variety of trendy bars, eateries and shops. That's not all – you're just a few minutes walk away from Piccadilly train station – so the whole city and beyond is your oyster.

If you like to take a closer look at what this apartment has to offer, don't hesitate to get in touch with our team.

Available NOW (subject to application & referencing)







Energy Efficiency Rating		Environmental Impact (CO <sub>2</sub> ) Rating	
Band	Score	Band	Score
A	89-95	A	1-2
B	81-88	B	3-4
C	69-80	C	5-6
D	62-68	D	7-8
E	55-61	E	9-10
F	49-54	F	11-12
G	41-48	G	13-14
H	35-40		
I	21-34		