



North Central, Dyche Street, Manchester
Offers In Excess Of £250,000

Ascend
Built on higher standards

North Central, Dyche Street, Manchester

8th FLOOR, TWO BEDROOM APARTMENT WITH SECURE ALLOCATED PARKING! - This fantastic two-bedroom apartment is just a stone's throw from Manchester City Centre, with spacious modern rooms, two bedrooms, and a carparking space. Best of all, it comes fully furnished ready for you to move in!

Located in the Green Quarter, you're a ten-minute walk from the Amdale Shopping Centre in the heart of Manchester. From there, you have easy access to the Northern Quarter, for an abundance of quirky bars and independently owned shops, or Deansgate for restaurants and pubs. You have all of Manchester on your doorstep! With Victoria train station less than ten-minutes away on foot, and Shudehill Interchange just a five-minute stroll away, this apartment is also perfect for both commuting and travel.

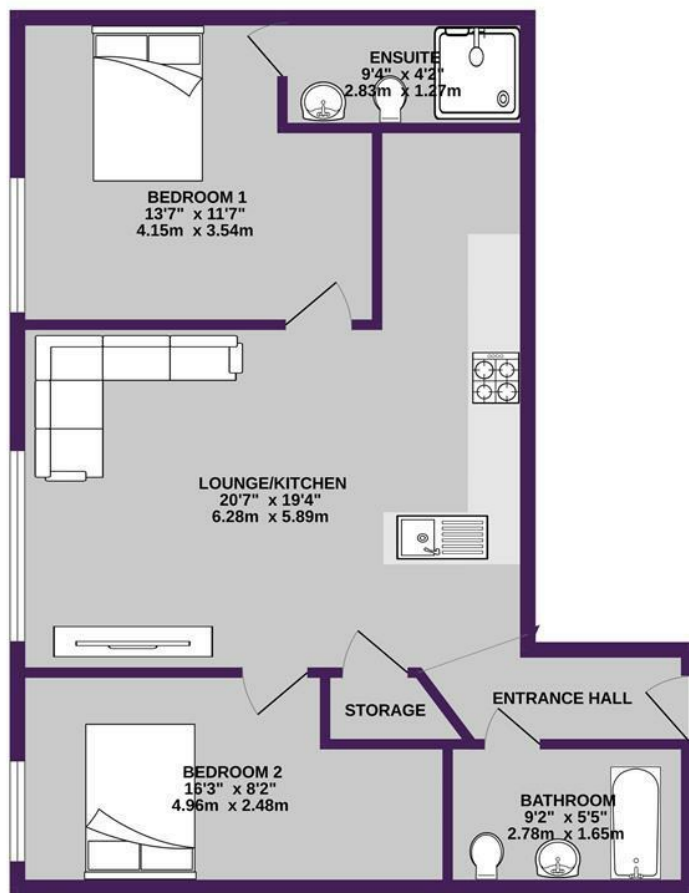
Inside this eighth floor apartment, the living room is wide with large floor to ceiling windows that not only let in the light, but give you a gorgeous view. The kitchen is lovely and modern, with wide counter space, ample storage, and a breakfast bar. Both bedrooms are large with tall windows and comfortable double beds. The bathroom features a shower bath, perfect for those days you want a bath, as well as space for your products, and a heated towel rack.

With its brilliant location, spacious modern rooms, and carpark, this apartment is guaranteed not to be available for long. Contact our team today.

Tenure: Leasehold



Please note that we have not tested any apparatus, equipment, fixtures, fittings or services, and so cannot verify they are in working order or fit for their purpose. Furthermore solicitors should confirm moveable items described in the sales particulars are, in fact, included in the sale since circumstances do change during marketing or negotiations. A final inspection prior to exchange of contracts is also recommended. Although we try to ensure accuracy, measurements used in this brochure may be approximate. Therefore if intending purchasers need accurate measurements to order carpeting or to ensure existing furniture will fit, they should take such measurements themselves.



NORTH CENTRAL, DYCHE STREET, MANCHESTER, M4 4BQ

TOTAL FLOOR AREA: 657sq.ft. (61.0 sq.m.) approx.

Whilst every attempt has been made to ensure the accuracy of the floorplan contained here, measurements of doors, windows, rooms and any other items are approximate and no responsibility is taken for any error, omission or mis-statement. This plan is for illustrative purposes only and should be used as such by any prospective purchaser. The services, systems and appliances shown have not been tested and no guarantee as to their operability or efficiency can be given.
Made with Metropix ©2024

