



Alto, Sillavan Way, Salford

£170,000

Ascend
Built on higher standards

Entrance Hallway

Front entrance door, wall mounted electric heater. Built in utility cupboard with plumbing for an automatic washing machine and storage space. Wood effect flooring, wall mounted intercom system, doors to all rooms.

Open Plan Living Room & Kitchen

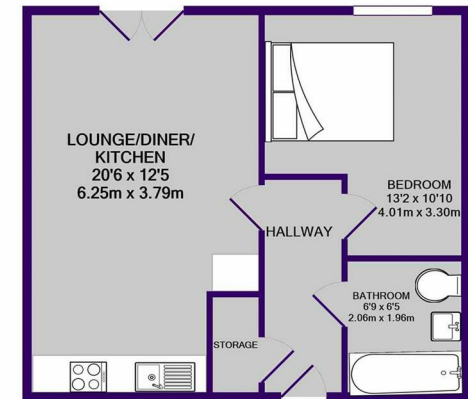
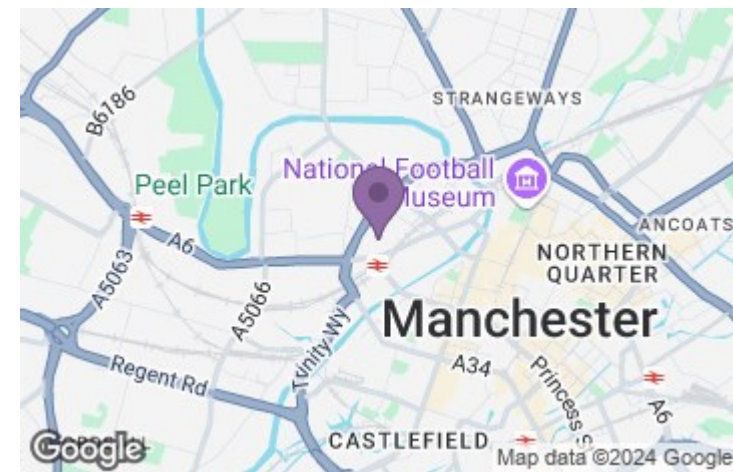
Furnished a range of wall mounted and base level units with complimentary work top surfaces over, incorporating a stainless steel sink and drainer. Integrated dishwasher and fridge freezer. Built in electric oven and grill with an induction hob and extractor hood over. Continuation of the wood effect flooring, wall mounted heater. Double doors opening to the Juliet balcony.

Bedroom

Double glazed window, continuation of the wood effect flooring, wall mounted electric heater.

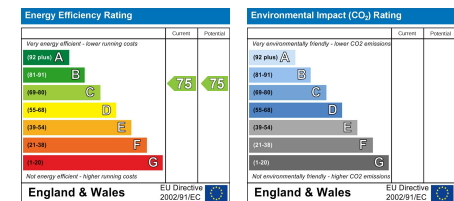
Bathroom

Furnished with a modern three piece suite comprising: panelled bath with wall mounted shower attachment over and shower screen, wall mounted wash hand basin and a low level WC. Fully tiled walls, tiled flooring, extractor fan.



TOTAL APPROX. FLOOR AREA 477 SQ.FT. (44.3 SQ.M.)

Whilst every attempt has been made to ensure the accuracy of the floor plan contained here, measurements of doors, windows, rooms and any other items are approximate and no responsibility is taken for any error, omission, or mis-statement. This plan is for illustrative purposes only and should be used as such by any prospective purchaser. The services, systems and appliances shown have not been tested and no guarantee as to their operability or efficiency can be given
Made with Metropix ©2021



241 Deansgate, Manchester, Lancashire, M3 4EL

Tel: 0161 637 8336

Email: contactus@ascendproperties.com

www.ascendproperties.com

Ascend

Built on higher standards