

241 Deansgate, Manchester, Lancashire, M3 4EL

Tel: 0161 637 8336

Email: [contactus@ascendproperties.com](mailto:contactus@ascendproperties.com)

[www.ascendproperties.com](http://www.ascendproperties.com)

# Ascend

Built on higher standards



Life Building, Hulme High Street, Manchester

£1,850 PCM

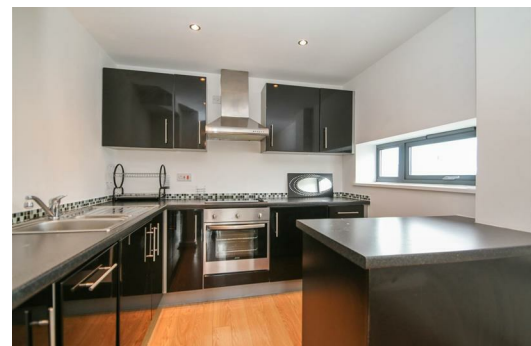
This incredible three bedroom, one bathroom apartment is located in a stunning high street development in Hulme. Stylish both inside and out, this property is perfect for working professionals and university students.

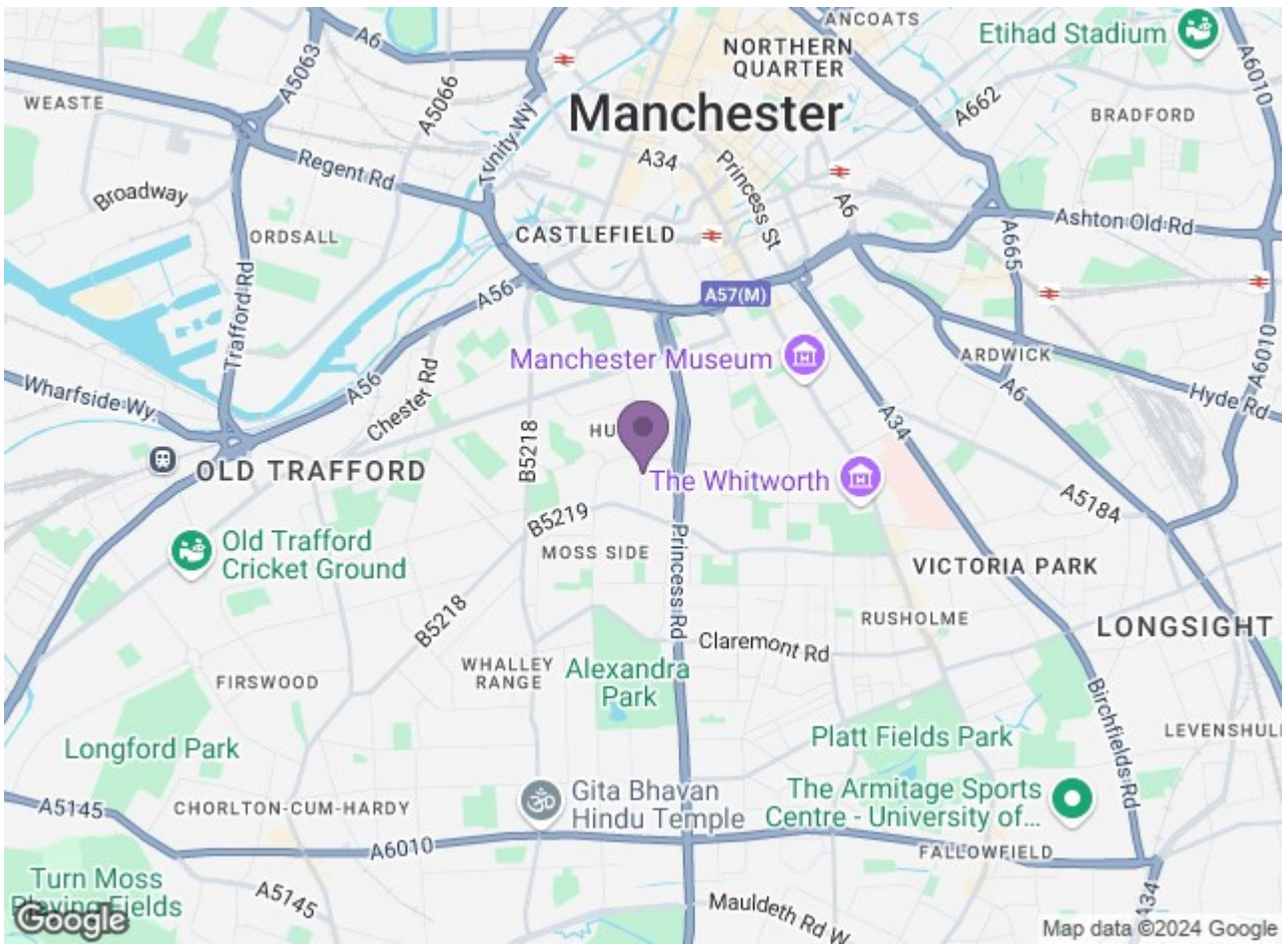
Inside you'll find a sleek, modern design throughout with bright and spacious rooms. The open-plan lounge/kitchen benefits from plenty of space, and the lounge opens out onto a private Juliette balcony - ideal for experiencing the breeze and buzz of the city.

Upstairs you'll find three slick double bedrooms with tonnes of space to spare and the master bedroom is flooded with light from the full-length windows. On top of this, the master bedroom also opens out onto your very own private and spacious sun terrace - absolutely ideal if you want to make the most of the sun, relax or entertain guests and friends.

If that wasn't perfect enough, you've also got easy transport links into the city centre (including a bus route to Oxford Road and the Universities) and you're only a hop, skip and a jump away from Deansgate. You'll have plenty of amenities right on your doorstep too - what more could you want?

\*Please note that this development is currently undergoing assessment for remedial works, to remove and replace combustible insulation\*





| Energy Efficiency Rating |        | Environmental Impact (CO <sub>2</sub> ) Rating |         |
|--------------------------|--------|--|---------|
| Band                     | Score  | Band   | Score   |
| A                        | 92-100 | A  | 1-23    |
| B                        | 81-91  | B  | 24-47   |
| C                        | 69-80  | C  | 48-71   |
| D                        | 55-68  | D  | 72-95   |
| E                        | 39-54  | E  | 96-120  |
| F                        | 22-38  | F  | 121-147 |
| G                        | 1-21   | G  | 148-175 |

Energy Efficiency Rating: **C** (Score: 77)  
 Environmental Impact (CO<sub>2</sub>) Rating: **D** (Score: 88)