

241 Deansgate, Manchester, Lancashire, M3 4EL

Tel: 0161 637 8336

Email: contactus@ascendproperties.com

www.ascendproperties.com

Ascend

Built on higher standards



Addington Street, Manchester

£2,250 PCM

This is your chance to live in a stunning three-bedroom townhouse style apartment in a forward-thinking neighbourhood full of personality and individuality. A place to really make your mark on the city!

Located at the centre of an up-and-coming, exciting quarter of Manchester. Far enough away from the hustle and bustle of the centre but only a 10-minute walk away from Manchester's major travel routes and only a 5-minute walk to the Northern Quarter, from there, you're spoilt for choice with independent shops, restaurants, and bars to pick from.

This New Cross Central apartment blends ultra-modern style and raw beauty, with a combination of exposed concrete walls and high-quality interior finishes, including gorgeous wood floors and natural quartz worktops. The bathrooms feature crafted wall tiling and brass taps.

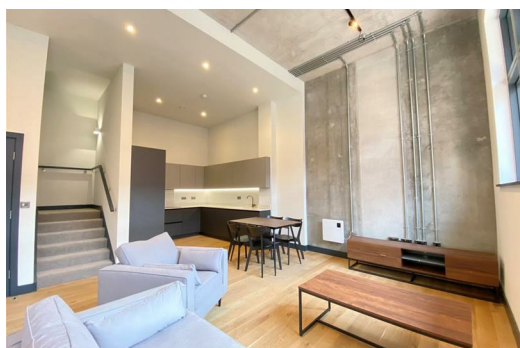
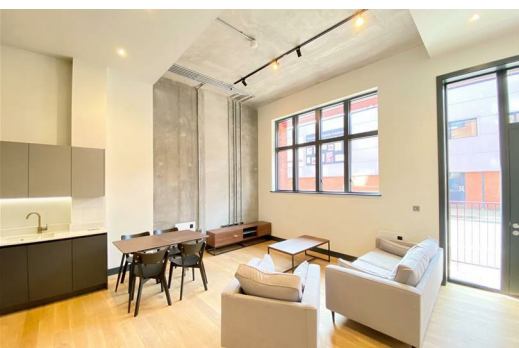
With its stunning interiors, spacious living areas and a fantastic location, this apartment is guaranteed to be extremely popular! If you are interested in having a closer look or have any questions, don't hesitate to get in touch.

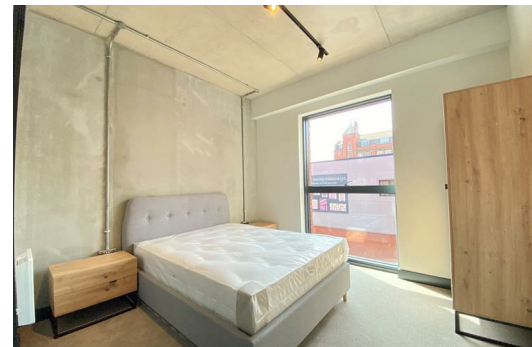
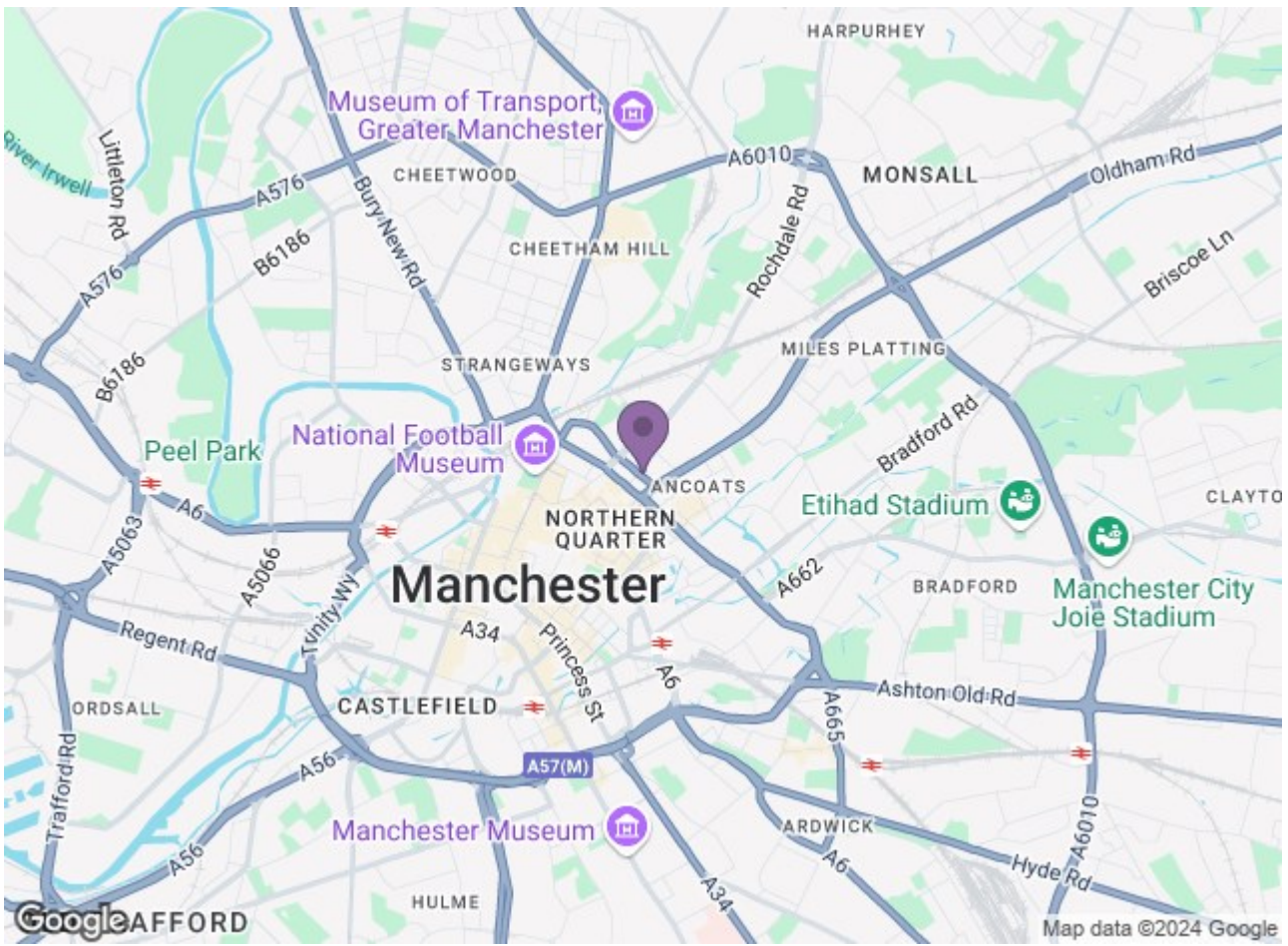
Available NOW (subject to application & referencing).

12 month tenancy.

Council Tax Band D.

Deposit £2,590.





Energy Efficiency Rating		Environmental Impact (CO ₂) Rating	
Current	Target	Current	Target
Energy A	Energy B	Enviro A	Enviro B
Energy B	Energy C	Enviro B	Enviro C
Energy C	Energy D	Enviro C	Enviro D
Energy D	Energy E	Enviro D	Enviro E
Energy E	Energy F	Enviro E	Enviro F
Energy F	Energy G	Enviro F	Enviro G
Energy G	Energy H	Enviro G	Enviro H
Energy H	Energy I	Enviro H	Enviro I
Energy I	Energy J	Enviro I	Enviro J

Energy Efficiency Rating: Current **B**, Target **B** (75-76)
 Environmental Impact (CO₂) Rating: Current **B**, Target **B**

Ascend
Built on higher standards