

241 Deansgate, Manchester, Lancashire, M3 4EL

Tel: 0161 637 8336

Email: contactus@ascendproperties.com

www.ascendproperties.com

Ascend

Built on higher standards



St. Philips Square, Salford

£2,250 PCM

Ascend Properties are pleased to offer this three story End Town House within a much sought after residential location on the outskirts of Manchester City Centre.

Upon entering the property you are greeted with a spacious entrance hallway, which leads into a modern lounge and open plan fitted kitchen with modern appliances and a breakfast bar. Up on the first floor are two spacious double bedrooms and stylish bathroom. On the top floor is the master bedroom, en-suite shower room, & access to the large roof terrace with views of the rear garden, & beyond into the City Centre.

The location of this property is in the heart of the Salford Central regeneration area, within easy access to the many shops and amenities.

With access to major transport links, this home is ideal for those looking to commute the short distance into Manchester city centre and across the North West.

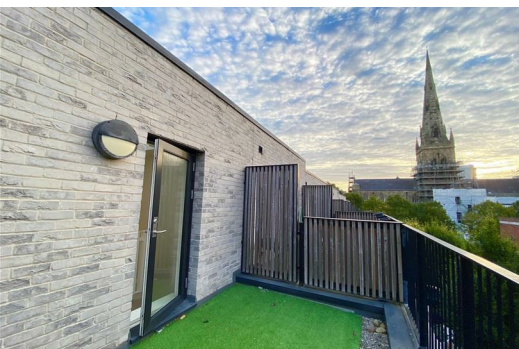
We anticipate that this house will be snapped up quickly, so don't hesitate to get in touch today if you like what you see!

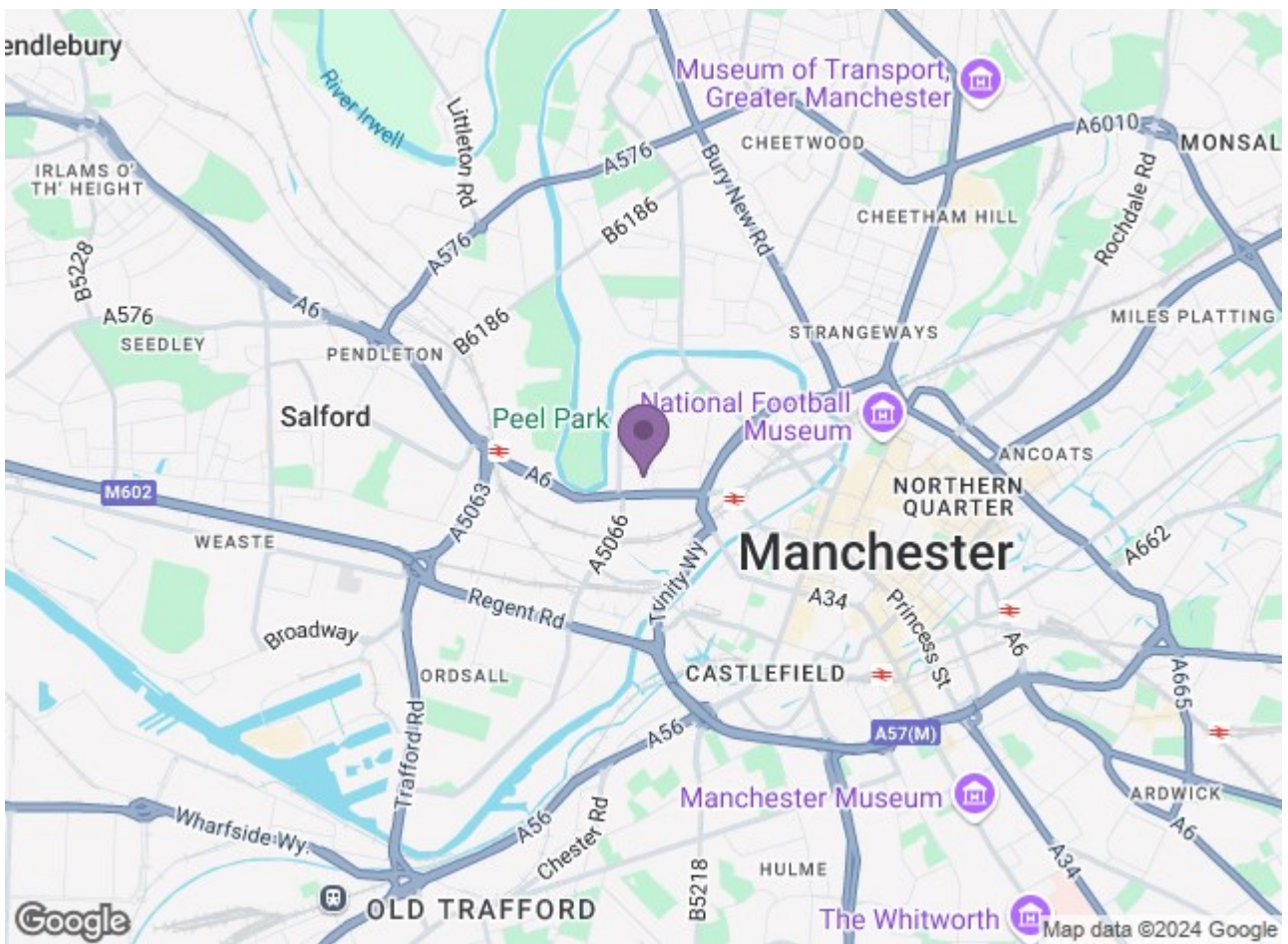
Available 11th October 2024

12 month tenancy

Deposit £2,590

Council Tax Band C





| Energy Efficiency Rating | | Environmental Impact (CO ₂) Rating | |
|--------------------------|----------|--|----------|
| Current | Target | Current | Target |
| Energy A | Energy B | Impact A | Impact B |
| Energy B | Energy C | Impact B | Impact C |
| Energy C | Energy D | Impact C | Impact D |
| Energy D | Energy E | Impact D | Impact E |
| Energy E | Energy F | Impact E | Impact F |
| Energy F | Energy G | Impact F | Impact G |
| Energy G | Energy H | Impact G | Impact H |
| Energy H | Energy I | Impact H | Impact I |
| Energy I | Energy J | Impact I | Impact J |

England & Wales

Ascend
Built on higher standards