

241 Deansgate, Manchester, Lancashire, M3 4EL

Tel: 0161 637 8336

Email: [contactus@ascendproperties.com](mailto:contactus@ascendproperties.com)

[www.ascendproperties.com](http://www.ascendproperties.com)

# Ascend

Built on higher standards



Michigan Point Tower, Michigan Avenue, Salford

£1,300 PCM

\*AVAILABLE NOW\*

Located within an incredibly popular Michigan Tower development and smack bang in Salford Quays, this stunning two bedroom fully-furnished apartment is the perfect place to call home!

Locations really don't get much better than this. Seriously, this development is based in the heart of Salford Quays/Media City UK so you'll have everything from an outlet store to various bars & restaurants right at your fingertips. The transport links for this apartment are amazing as the development is actually built right on the Harbour City tram stop. The journey from your apartment to the tram stop would take no more than 60 seconds! Not only this, the apartment is 2 minutes away from Regent Road (the main road in and out of Manchester), 10 minutes from Trafford Centre and 20 minutes from the airport.

The development is also stocked with an onsite gym, cinema room, communal lounge/dining area and rooftop terrace for residents to use at their own leisure.

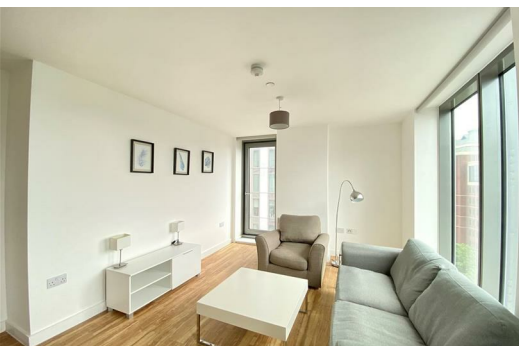
What are you waiting for? This apartment ticks Every. Single. Box. If you'd like to have a look around or just simply gather some more information, get in touch with us today and our dedicated team will sort everything for you.

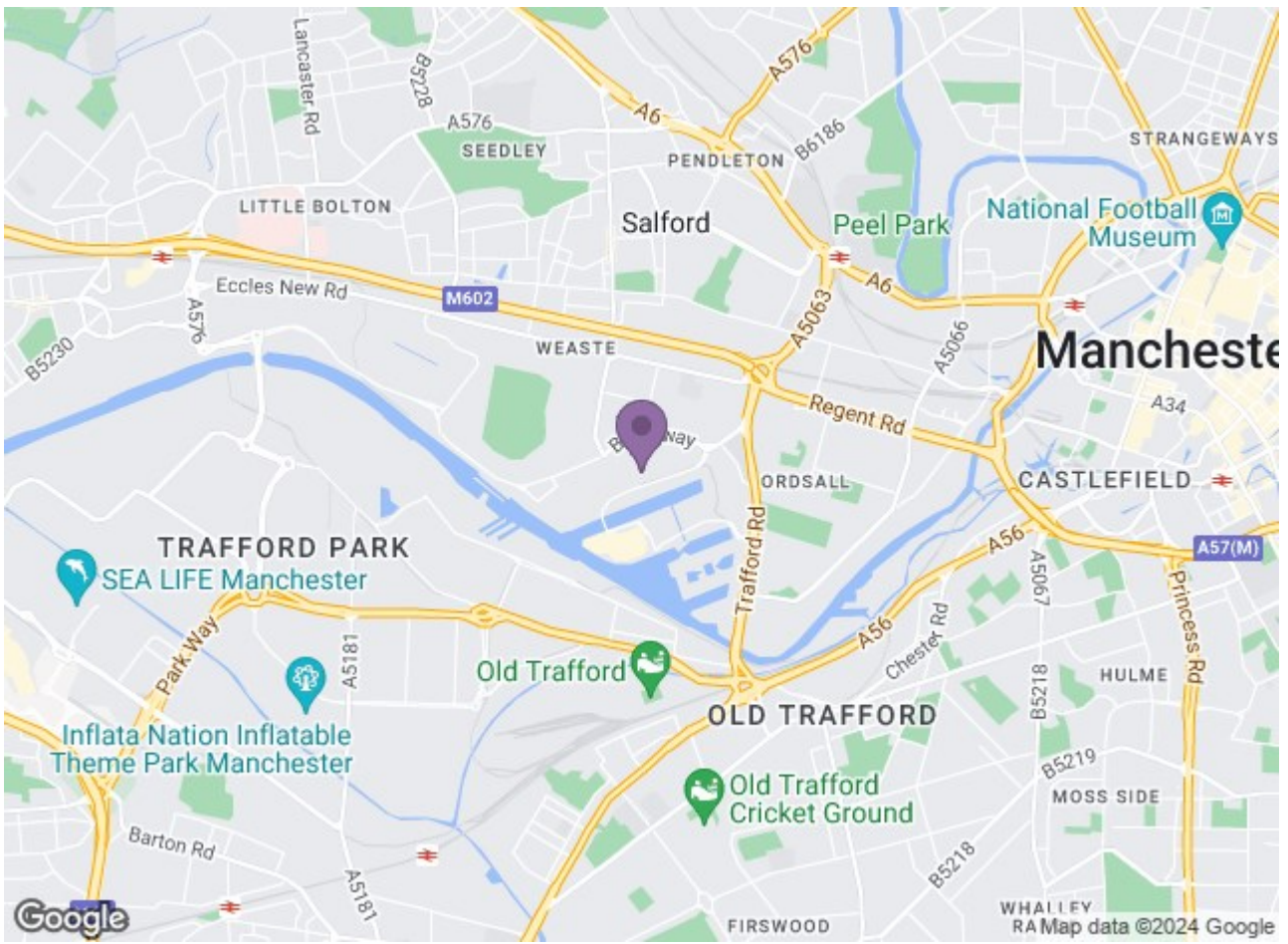
Available NOW

Deposit: £1,500

Tenancy Length: 12 Months Minimum

Council Tax Band: B - Salford City Council





Energy Efficiency Rating		Environmental Impact (CO <sub>2</sub> ) Rating	
Current	Potential	Current	Potential
81	81	G	G

Energy Efficiency Rating: A scale from A (92-100) to G (1-10).  
 Environmental Impact (CO<sub>2</sub>) Rating: A scale from A (1-10) to G (101-150).