

241 Deansgate, Manchester, Lancashire, M3 4EL

Tel: 0161 637 8336

Email: contactus@ascendproperties.com

www.ascendproperties.com

Ascend

Built on higher standards



Potato Wharf, Manchester

£1,400 PCM

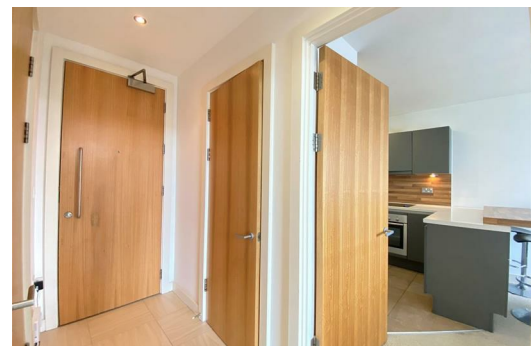
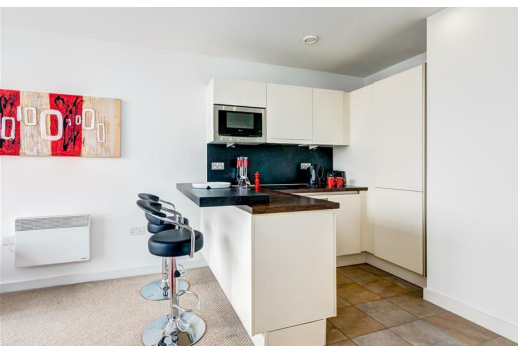
Love the finer things in life? This gorgeous apartment in Castlefield will be right up your street.

Aside from being a hop, skip and a jump away from the beating heart of Manchester city centre, Castlefield is renowned for its suburban vibe and rustic charm. It has an independent nightlife that rivals the city centre big players and a great social scene with a huge range of bars & restaurants right on the doorstep. You could pretty much delete that little well-known taxi app! Talking of public transport, there's also an abundance of stations and road-links around the immediate area so commuting around the city is a breeze.

Enough about the location - let's talk about the apartment. This modern two bedroom apartment in Potato Wharf is an absolute better. Complete with floor-to-ceiling windows, canal views, ultra high-spec kitchens (think Hans Grohe finishing's and you'll know what we're getting at) and not one, but two bathrooms - you'll be half way to discovering just what a property this is. This apartment is so well presented, you could literally drop your bags and move in.

Images are for marketing purposes only so the internal fixtures, fittings and furnishings may vary.

Available 26th August 2024
12 month tenancy.
Deposit £1,140.
Council Tax Band D.



Living Room & Kitchen
20'8" x 15'3" (6.30 x 4.65)

A stunning open plan and living room with arguably the best viewings in Manchester. A breakfast bar dividing the kitchen from the living room. The kitchen is equipped with all white good to the highest standards.

Bedroom One
15'1" x 9'4" (4.60 x 2.86)

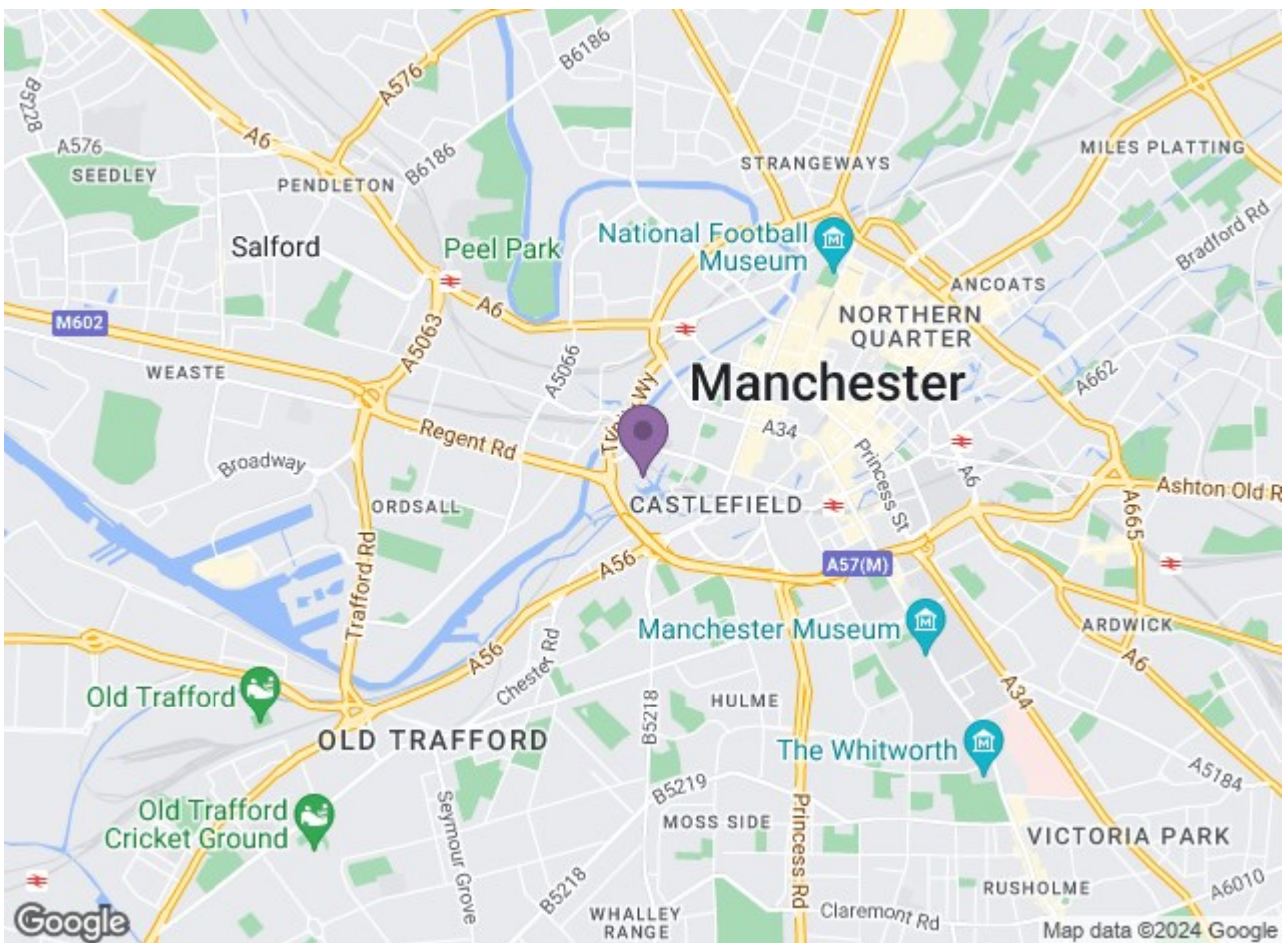
A great sized bedroom allowing ample space for bedroom furniture and again showing off them city scape views. Then of course you have your own luxurious en suite with a walk in shower and two piece suite.

Bedroom two
11'3" x 8'11" (3.43 x 2.74)

A great sized bedroom considering it's the smaller of the two.

Master bathroom
9'1" x 5'7" (2.79 x 1.71)

A stunning master bathroom with 3 piece suite



| Energy Efficiency Rating | | Environmental Impact (CO ₂) Rating | |
|--------------------------|-----------|--|-----------|
| Current | Potential | Current | Potential |
| 71 | 83 | 80 | 81 |