



Carboy Street, Whitworth, Rochdale

£1,175 Per Month

Explore the beauty of Spring Mill, an enchanting development of 2, 3, and 4-bedroom homes nestled in Whitworth, Lancashire.

Presenting The Fergus, a stunning three bedroom semi-detached home available for rent. Experience the perfect blend of beauty and functionality in this property.

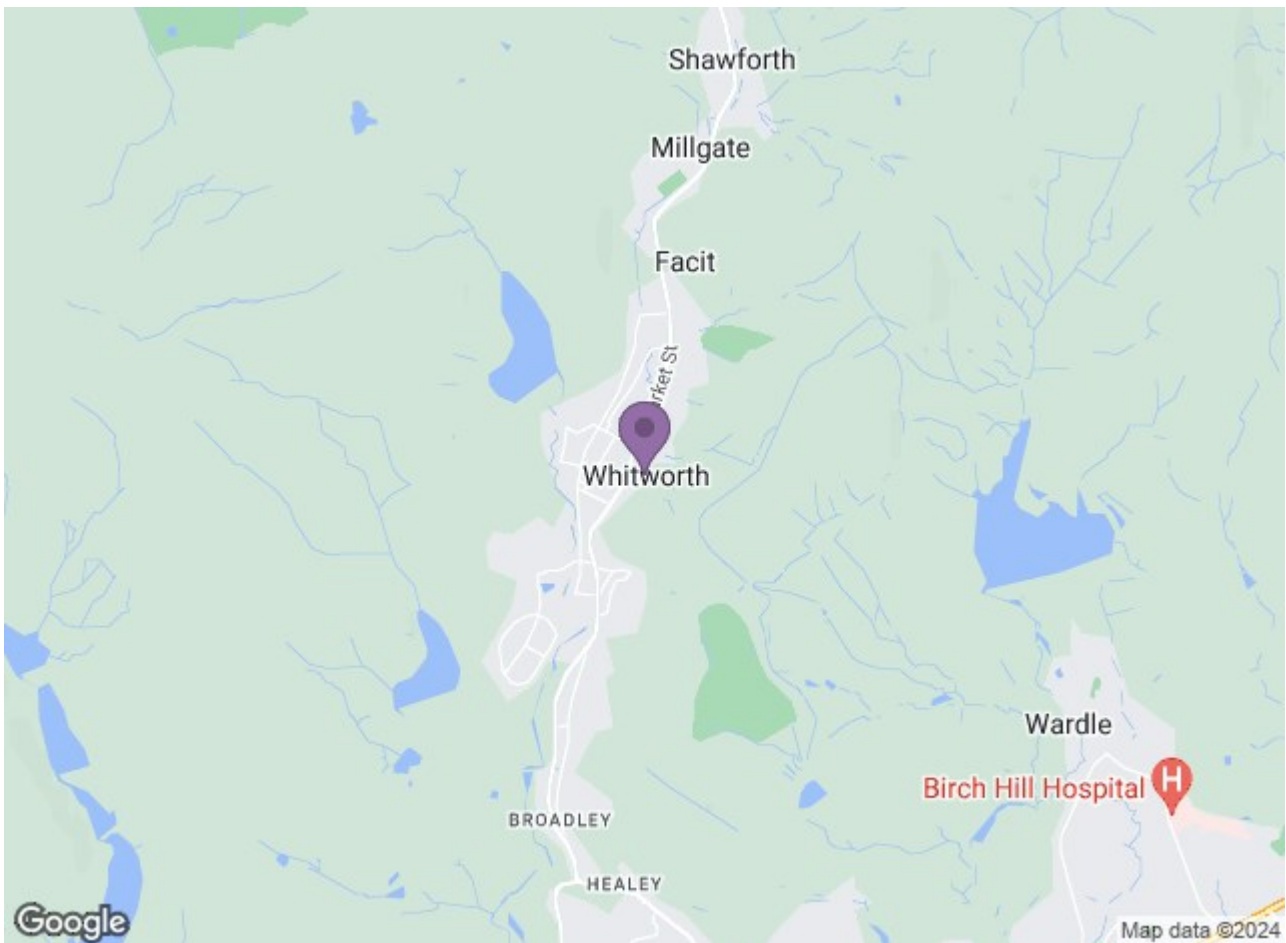
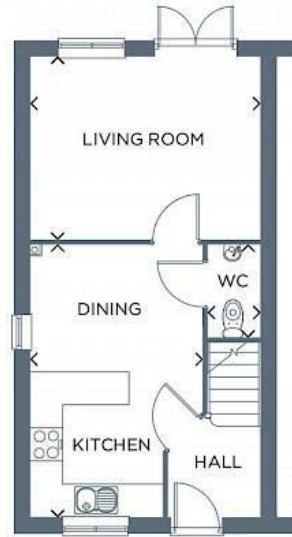
Step inside and be welcomed by the bright living room, offering a comfortable space to relax and unwind. The contemporary open-plan kitchen-diner awaits, providing an ideal setting for cooking up a storm. Open the French doors and seamlessly transition between indoor and outdoor living as you step out into the garden, creating a harmonious flow of space. Convenience is also at your fingertips with a handy downstairs WC.

Upstairs, you'll discover a spacious master bedroom, offering a haven of relaxation. There are two additional well-proportioned bedrooms, both with a cosy and comfortable feel to them. A family bathroom, finished with Porcelanosa tiling, completes this level, adding a touch of elegance to your daily routines.

Embrace the tranquility of the Pennines as you settle into this picturesque location.

Only a short drive from the thriving town of Rochdale and within 45 minutes of Manchester's city centre, Spring Mill offers the perfect balance between peaceful countryside living and the vibrancy of the city.





Energy Efficiency Rating		Environmental Impact (CO ₂) Rating	
Current	Potential	Current	Potential
Energy A	Energy A	Carbon A	Carbon A
Energy B	Energy B	Carbon B	Carbon B
Energy C	Energy C	Carbon C	Carbon C
Energy D	Energy D	Carbon D	Carbon D
Energy E	Energy E	Carbon E	Carbon E
Energy F	Energy F	Carbon F	Carbon F
Energy G	Energy G	Carbon G	Carbon G

England & Wales