



Spring Mill, Whitworth, OL12

£1,280 PCM

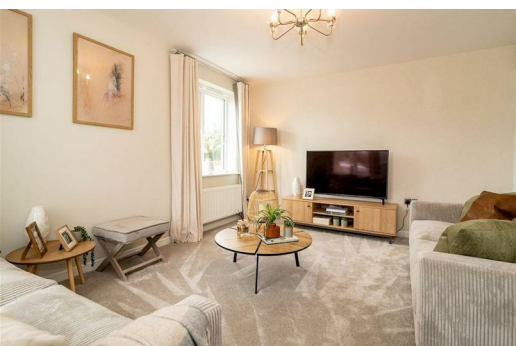
Explore the beauty of Spring Mill, an enchanting development of 2, 3, and 4-bedroom homes nestled in Whitworth, Lancashire.

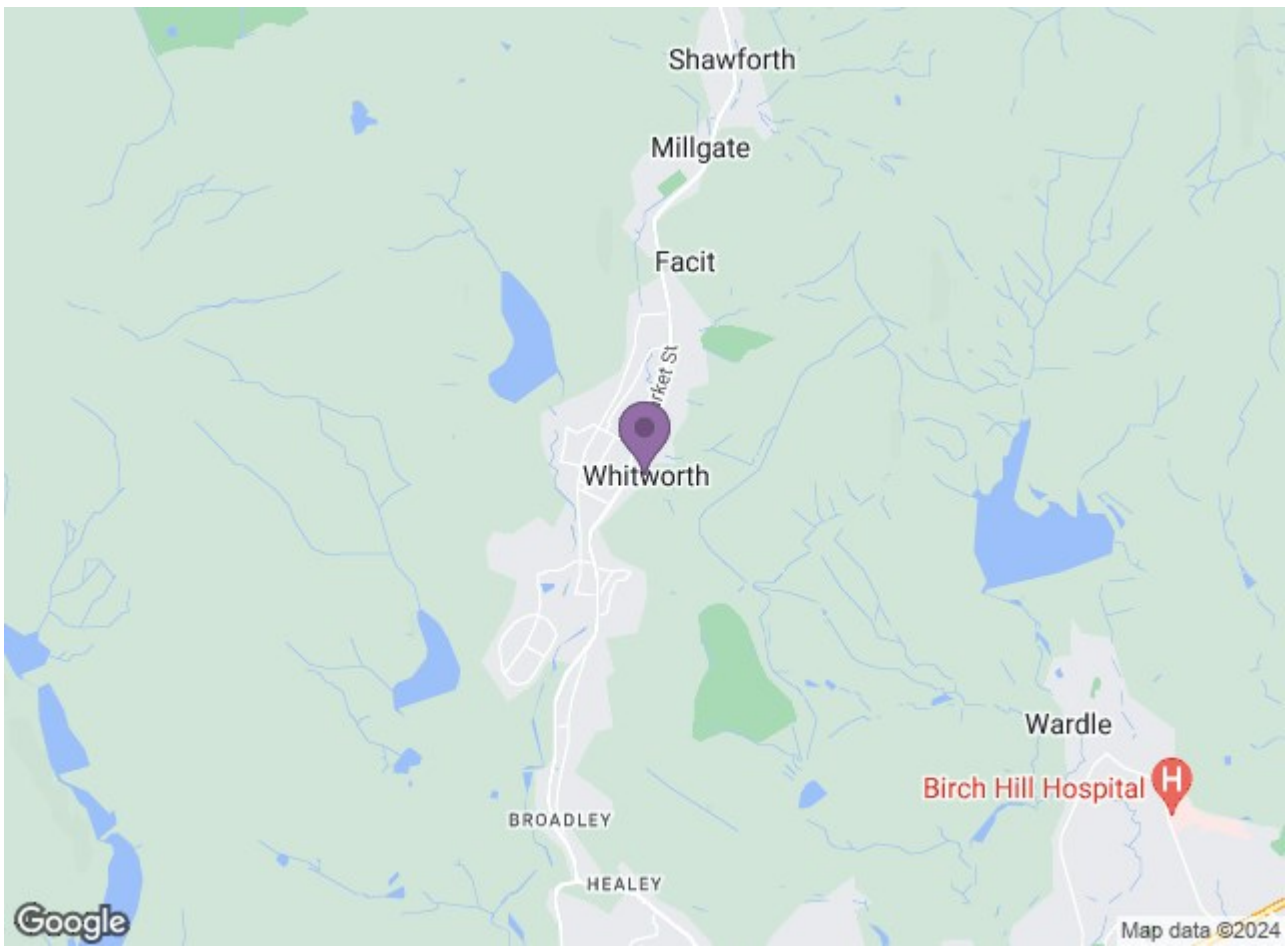
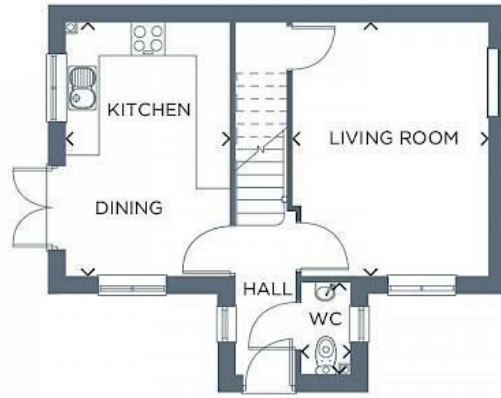
Welcome to The Renmore, a stunning three-bedroom detached home that embodies modern living.

Step into this exquisite property and be captivated by the elegant central staircase, dividing the space and setting the tone for what lies beyond. The contemporary kitchen-diner is the heart of the home, boasting a sleek design and effortless flow for entertaining. French doors lead to the garden, perfect for hosting dinner parties or enjoying family meals in the sun.

Adjacent to the kitchen-diner is the spacious living room, bathed in natural light through the large windows. The perfect place to relax and unwind with loved ones or indulge in a good book! The under-stairs storage cupboard also keeps living spaces organised and clutter-free.

Upstairs, three generously proportioned bedrooms maximise the comfort and tranquility of The Renmore. The family bathroom showcases luxurious fixtures, whilst the master bedroom, with its lavish en-suite bathroom, offers a private sanctuary for relaxation.





Energy Efficiency Rating		Environmental Impact (CO ₂) Rating	
Band	Score	Band	Score
A	92-100	A	1-10
B	81-91	B	11-20
C	69-80	C	21-30
D	55-68	D	31-40
E	39-54	E	41-50
F	13-38	F	51-60
G	1-12	G	61-70

Energy Efficiency Rating: **B3**
 Environmental Impact (CO₂) Rating: **B**

Ascend
 Built on higher standards