

241 Deansgate, Manchester, Lancashire, M3 4EL

Tel: 0161 637 8336

Email: contactus@ascendproperties.com

www.ascendproperties.com

Ascend

Built on higher standards



Queens Terrace, Great Cheetham Street West, Salford

Offers In Excess Of £210,000

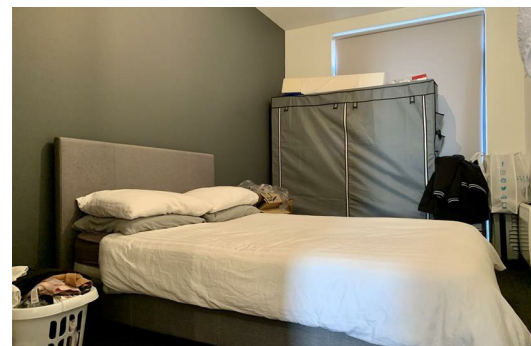
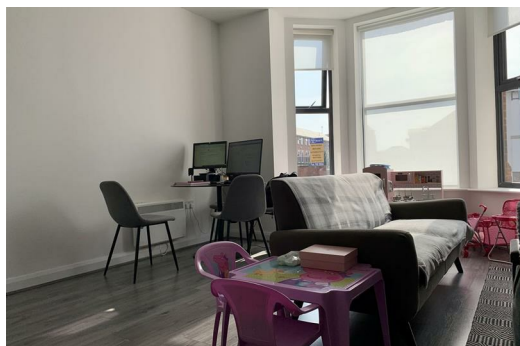
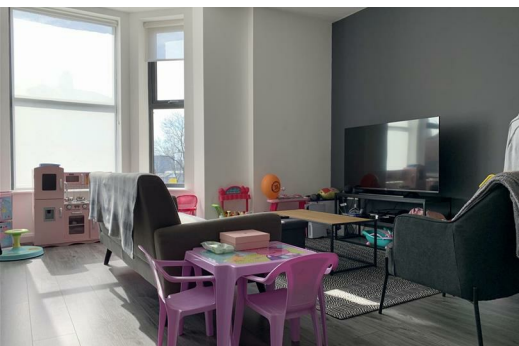
Indulge in the allure of this meticulously converted 2-bedroom apartment, a captivating residence now available for sale in Salford. Situated on the ground floor, its thoughtfully reimagined layout seamlessly blends contemporary design with a practical lifestyle. Boasting two elegantly appointed bathrooms, each space exudes a harmonious mix of convenience and sophistication.

Enjoy the added convenience of proximity to central Manchester, allowing you to effortlessly immerse yourself in the city's vibrant culture and amenities. The property's excellent transport links further enhance accessibility, making commuting a breeze. To complement urban living, the apartment features dedicated parking to the rear, ensuring a hassle-free experience for residents with vehicles.

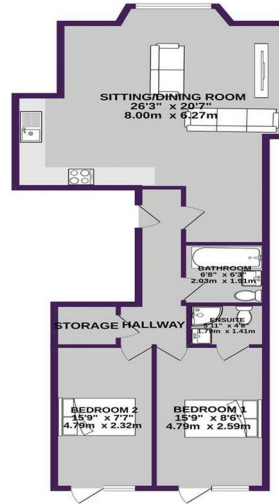
Step into the outdoor space, a private retreat that extends the living area and provides a serene escape. This residence harmoniously combines modernity, functionality, and the allure of city living – a unique opportunity to own a piece of metropolitan charm in the thriving community of Salford.

Currently Tenanted on a Rolling Contract at £900pcm

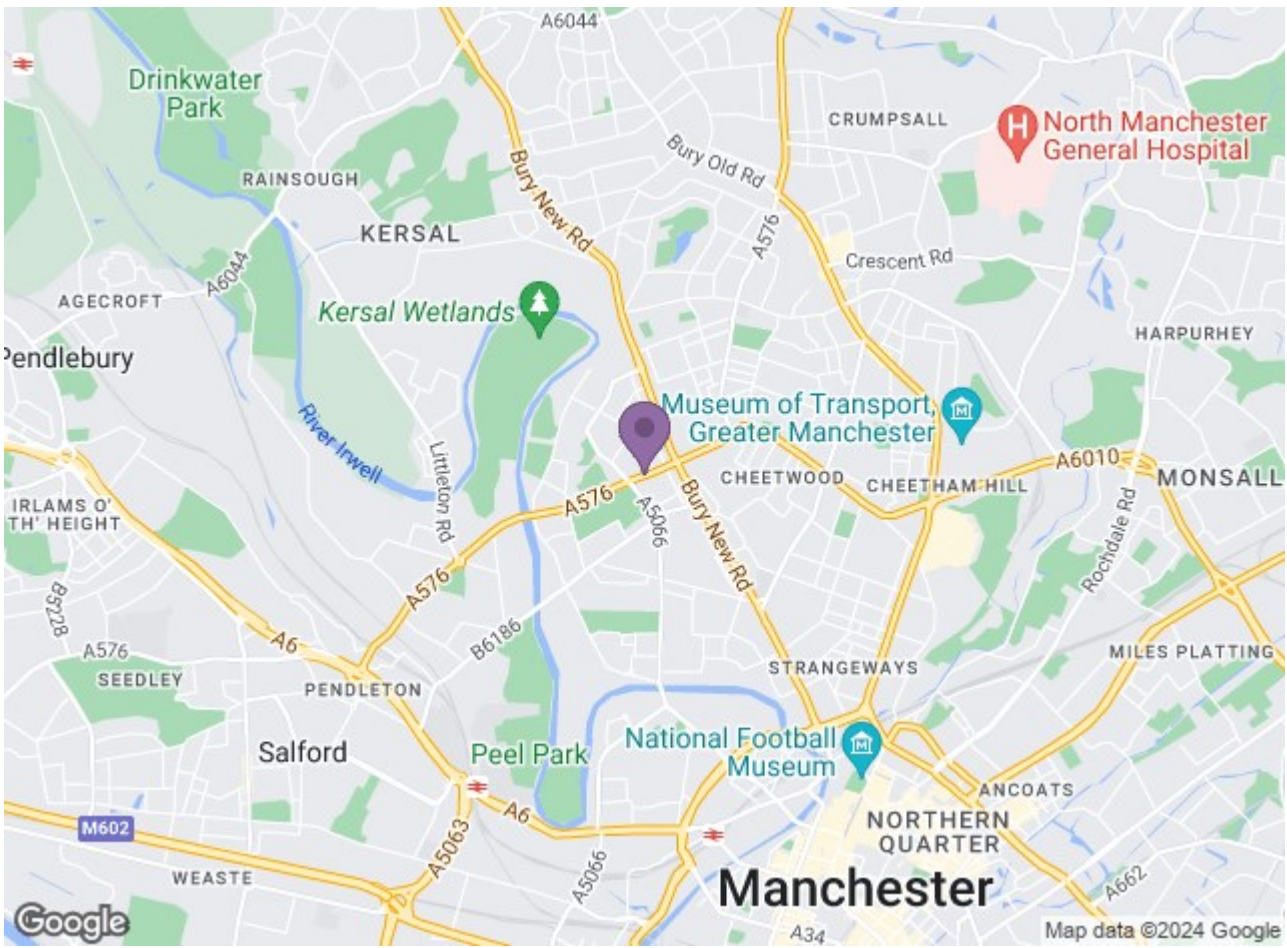
Service Charge: £1948PA
Ground Rent: £250



GROUND FLOOR
805 sq. ft. (74.8 sq.m.) approx.



TOTAL FLOOR AREA: 805 sq. ft. (74.8 sq.m.) approx.
 While every effort has been made to ensure the accuracy of the floorplan, measurements taken on-site, including those of any other work, are appropriate and responsibility is taken for any errors, omissions or misstatements. This plan is for general guidance only and should not be used for any other purpose. It is not a contract and is subject to change without notice. It is not a guarantee of efficiency or any other performance metric.



| Energy Efficiency Rating | | Environmental Impact (CO ₂) Rating | |
|--------------------------|-----------|--|-----------|
| Current | Potential | Current | Potential |
| G | B | F | D |