

241 Deansgate, Manchester, Lancashire, M3 4EL

Tel: 0161 637 8336

Email: contactus@ascendproperties.com

www.ascendproperties.com

Ascend

Built on higher standards



Queens Terrace, Great Cheetham Street West, Salford

Asking Price £235,000

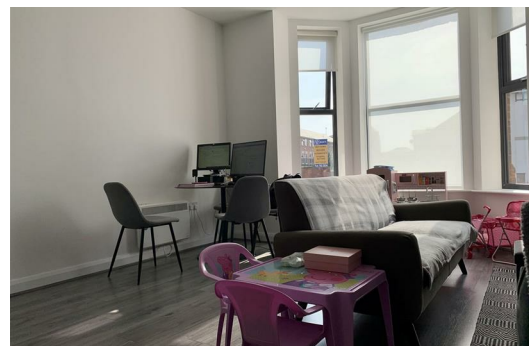
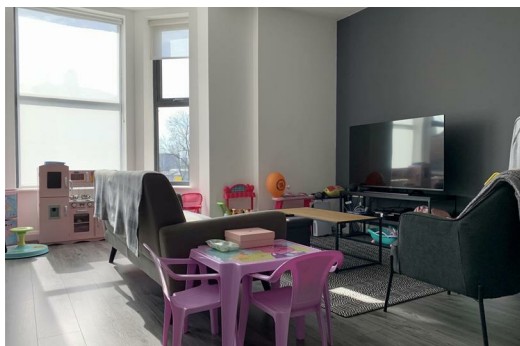
Indulge in the allure of this meticulously converted 2-bedroom apartment, a captivating residence now available for sale in Salford. Situated on the ground floor, its thoughtfully reimagined layout seamlessly blends contemporary design with a practical lifestyle. Boasting two elegantly appointed bathrooms, each space exudes a harmonious mix of convenience and sophistication.

Enjoy the added convenience of proximity to central Manchester, allowing you to effortlessly immerse yourself in the city's vibrant culture and amenities. The property's excellent transport links further enhance accessibility, making commuting a breeze. To complement urban living, the apartment features dedicated parking to the rear, ensuring a hassle-free experience for residents with vehicles.

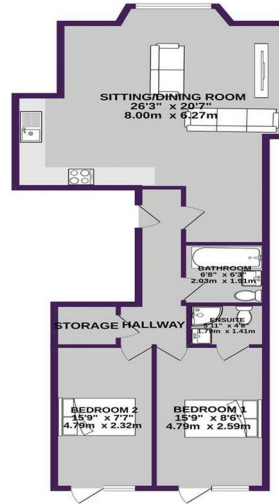
Step into the outdoor space, a private retreat that extends the living area and provides a serene escape. This residence harmoniously combines modernity, functionality, and the allure of city living – a unique opportunity to own a piece of metropolitan charm in the thriving community of Salford.

Currently Tenanted Until July 2024 at £900pcm

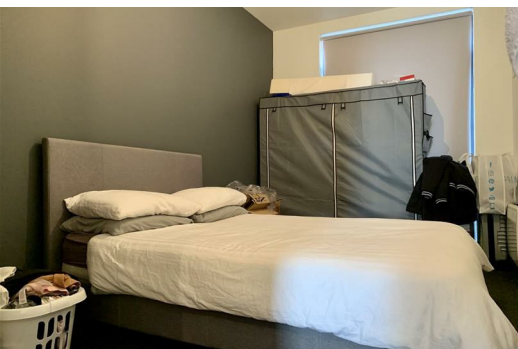
Service Charge: £1948PA
Ground Rent: £250



GROUND FLOOR
805 sq. ft. (74.8 sq.m.) approx.



TOTAL FLOOR AREA: 805 sq. ft. (74.8 sq.m.) approx.
 While every effort has been made to ensure the accuracy of the floorplan, measurements of actual dimensions should be used for all purposes. This plan is for general guidance only and should not be used for any other purpose. We are not responsible for any errors or omissions. All dimensions are to the face of the walls unless otherwise stated. © Ascend 2024



Energy Efficiency Rating		Environmental Impact (CO ₂) Rating	
Current	Potential	Current	Potential
80	81	D	C

England & Wales