

241 Deansgate, Manchester, Lancashire, M3 4EL

Tel: 0161 637 8336

Email: contactus@ascendproperties.com

www.ascendproperties.com

Ascend

Built on higher standards



Meadow Mill, Stockport

£1,150 PCM

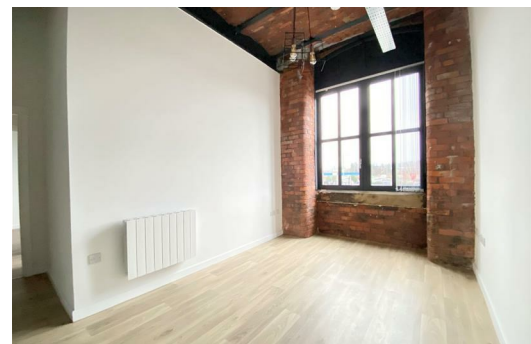
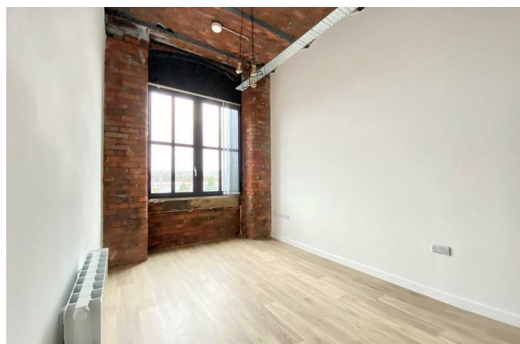
Ascend proudly presents this inviting two-bedroom deluxe apartment for rent at Meadow Mill, a historic Grade II listed 19th-century mill transformed into a vibrant residential enclave. Ideal for young professionals seeking a fusion of location, modernity, and Victorian charm, this apartment promises panoramic views and a distinctive living experience.

Upon entry, immerse yourself in the rich history of the building, where historic features blend seamlessly with contemporary comforts. Original elements such as higher-than-average ceiling heights, exposed brickwork, and intricate exterior details create a character-filled space exuding timeless warmth and charm.

The apartment features a generously sized open-plan living area with integrated appliances, providing a seamless blend of style and convenience. Additionally, there's a comfortable double bedroom and a spacious second bedroom, offering ample space for relaxation and rest. Completing the property is a stylish three-piece bathroom boasting elegant wall and floor tiles, adding a touch of luxury to everyday living.

Externally, residents benefit from secured on-site parking and bicycle storage facilities, ensuring convenience and peace of mind.

Situated prominently on Water Street, Meadow Mill residents enjoy proximity to renowned establishments such as Tesco Extra, Nandos, and KFC. With swift access to Stockport Town Centre and Central Manchester via a well-connected bus network and the nearby M60 motorway, just 0.2 miles away, the location caters to both local residents and commuters alike.





Energy Efficiency Rating		Environmental Impact (CO ₂) Rating	
Current	Potential	Current	Potential
Energy A	Energy D	Enviro A	Enviro D
Energy B	Energy E	Enviro B	Enviro E
Energy C	Energy F	Enviro C	Enviro F
Energy D	Energy G	Enviro D	Enviro G
Energy E	Energy H	Enviro E	Enviro H
Energy F	Energy I	Enviro F	Enviro I
Energy G	Energy J	Enviro G	Enviro J

Energy Efficiency Rating: Current **G1**, Potential **G1**
 Environmental Impact (CO₂) Rating: Current **G**, Potential **G**