



## The Blade, Manchester

£1,900 PCM

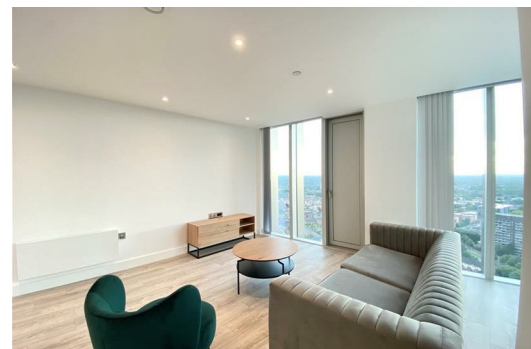
\*5th Floor Corner Aspect\*

Introducing The Blade, one of Manchester's most exciting new apartment schemes. This impressive 52-storey building offers residents unmatched panoramic views of the city's captivating skyline. And with over 400 luxurious apartments and fantastic communal spaces, The Blade guarantees an exceptional living experience.

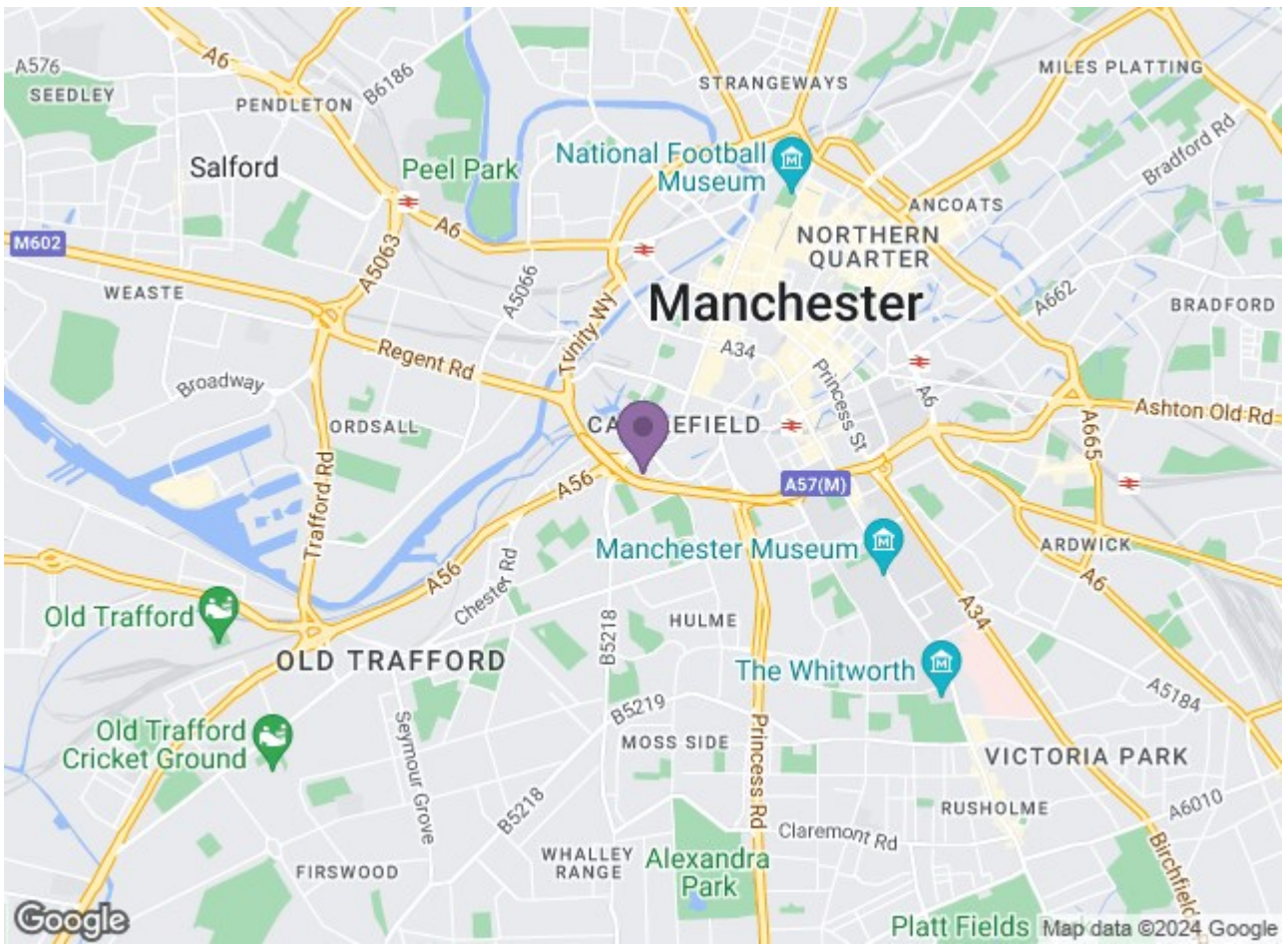
Nestled in the heart of Castlefield, Manchester's vibrant skyscraper district, The Blade seamlessly blends urban living with a tranquil and serene environment. And if you ever feel like escaping the hustle and bustle of the city, you'll appreciate the convenience of having Deansgate Train Station & Metrolink right on your doorstep.

Step into your new fully furnished home and be instantly captivated by the exquisite contemporary interior design. The kitchen, designed for culinary enthusiasts or those wanting to entertain on a Friday night, features top-of-the-line built-in appliances, modern mixer taps, and elegant under cabinet lighting.

The master bedroom offers a spacious retreat, complete with an ensuite bathroom, high-quality carpeting and plenty of storage options. The second bedroom is equally inviting and comfortable, ideal for guests, a home office or additional living space.







Energy Efficiency Rating		Environmental Impact (CO <sub>2</sub> ) Rating	
Current	Potential	Current	Potential
Energy A	Energy A	Impact A	Impact A
Energy B	Energy B	Impact B	Impact B
Energy C	Energy C	Impact C	Impact C
Energy D	Energy D	Impact D	Impact D
Energy E	Energy E	Impact E	Impact E
Energy F	Energy F	Impact F	Impact F
Energy G	Energy G	Impact G	Impact G

Energy Efficiency Rating: Current **B**, Potential **A** (Score: 84/84)  
 Environmental Impact (CO<sub>2</sub>) Rating: Current **A**, Potential **A**