

241 Deansgate, Manchester, Lancashire, M3 4EL

Tel: 0161 637 8336

Email: contactus@ascendproperties.com

www.ascendproperties.com

Ascend

Built on higher standards



NQ4, Bengal Street, Manchester

£210,000

This fantastic two bedroom apartment is perfectly located right in the heart of the ever popular Ancoats! Boasting a wonderful Manchester blend of the old and new: grand red-brick warehouses and former factories right alongside shops and modern developments.

There is a retail park just down the way, covering everything from groceries and clothing to a Pure Gym and even camping equipment. Plus you're also right next to the Northern Quarter, packed full of more bars, cafes, restaurants and quirky shops than you can shake a vintage stick at.

The accommodation is well proportioned throughout, with two spacious double bedrooms, a large open plan living kitchen and a bathroom.
The property also comes with one secure parking space.

Service Charge: Approx. £1600 Pa
Ground rent: £300 pa (including parking)
Lease 250 years from 2010 approx.
Management Company: Zenith
Council Tax: Band C £1605pa



Entrance Hall

Front entrance floor, wood effect flooring, airing cupboard housing hot water tank and plumbing for a washing machine. Doors to all rooms.

Living Room & Kitchen

19'5" x 10'6" (5.920 x 3.218)

The kitchen area is furnished with a range of wall mounted and base level units with work top surfaces over incorporating a stainless steel sink and drainer. Integrated electric oven and grill with a four ring induction hob with extractor hood and lighting over. Space for a fridge freezer.

uPVC double glazed window, wall mounted electric heater, continuation of the wood effect flooring.

Bedroom One

10'9" x 9'5" (3.296 x 2.893)

uPVC double glazed window, wall mounted electric heater, wood effect flooring.

Bedroom Two

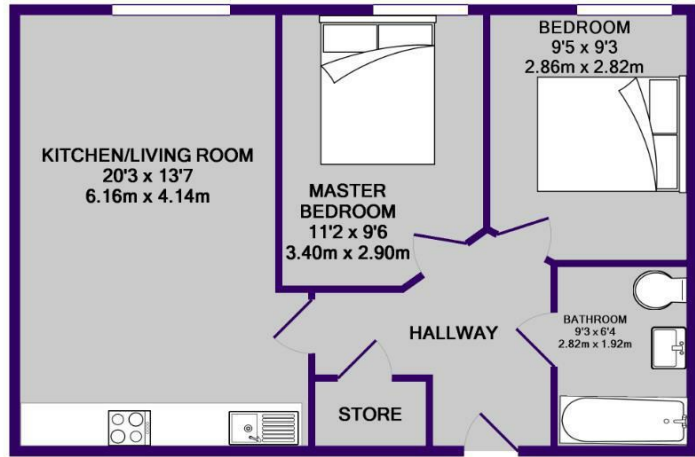
12'2" x 8'0" (3.732 x 2.446)

uPVC double glazed window, wall mounted electric heater, wood effect flooring.

Bathroom

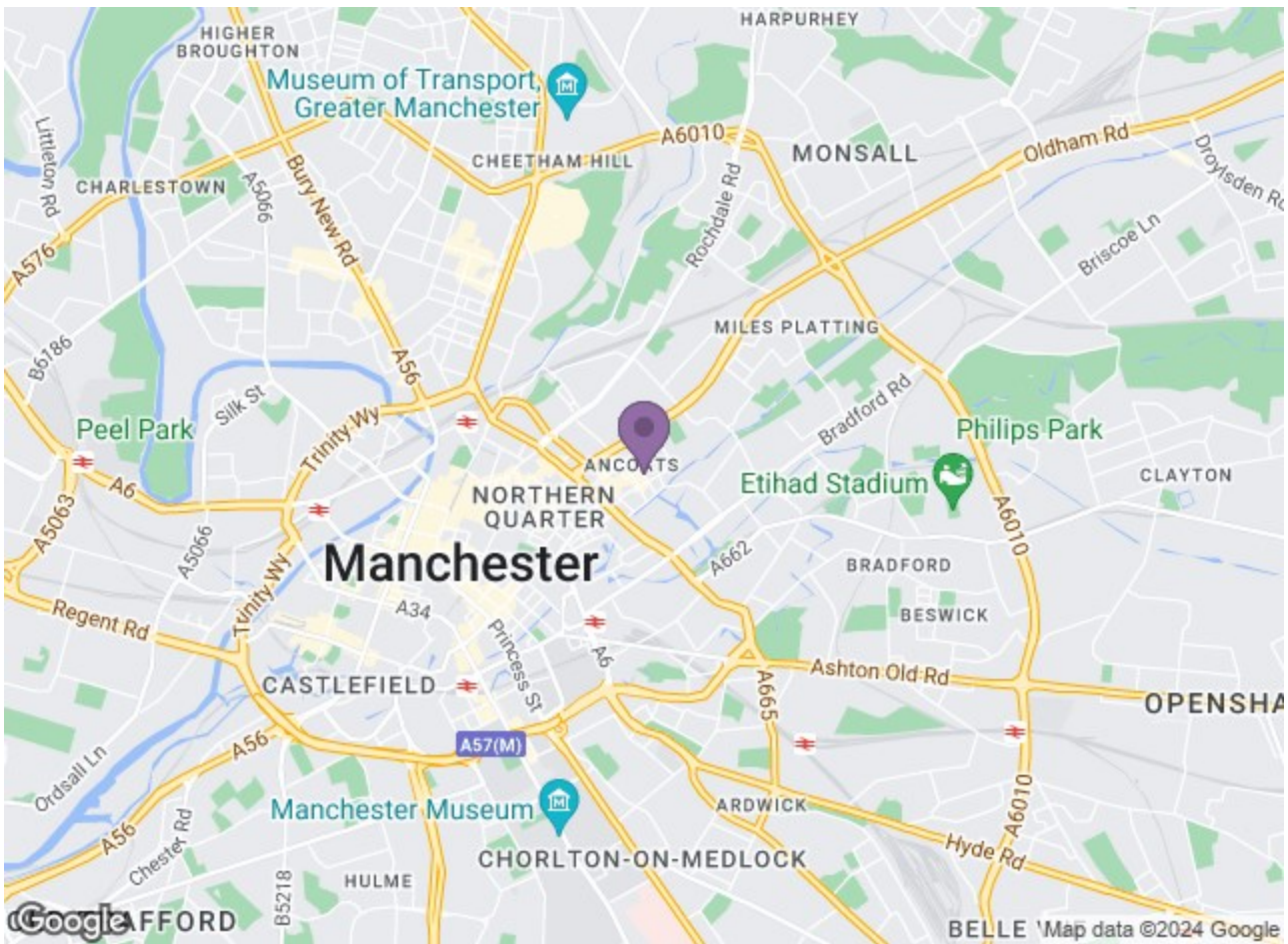
8'4" x 5'6" (2.546 x 1.693)

Furnished with a three piece suite comprising: Panelled bath with mixer shower over and shower screen, pedestal wash hand basin and a low level WC. Part tiled walls, tiled flooring, heated towel rail.



TOTAL APPROX. FLOOR AREA 626 SQ.FT. (58.2 SQ.M.)

Whilst every attempt has been made to ensure the accuracy of the floor plan contained here, measurements of doors, windows, rooms and any other items are approximate and no responsibility is taken for any error, omission, or mis-statement. This plan is for illustrative purposes only and should be used as such by any prospective purchaser. The services, systems and appliances shown have not been tested and no guarantee as to their operability or efficiency can be given
Made with Metropix ©2018



Energy Efficiency Rating		Environmental Impact (CO ₂) Rating	
Current	Potential	Current	Potential
76	88	G	B