



Lexington Court, Broadway, Salford

Price £115,000

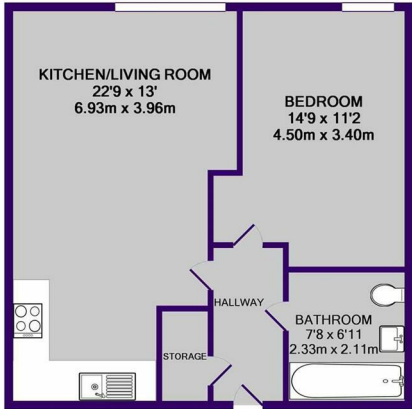
Ascend
Built on higher standards

Entrance Hallway
Entrance door from communal hallway, built in airing cupboard, wood effect flooring, doors to:

Open Plan Living Room & Kitchen
Furnished with a range of wall mounted and base level units with work top surfaces over incorporating a sink and drainer unit. Built in electric oven and grill with a four ring gas hob, extractor hood and lighting over. Integrated dishwasher, space for a fridge freezer, wall mounted electric heater. Continuation of the wood effect flooring, double glazed window.

Bedroom
Double glazed window, wall mounted electric heater.

Bathroom
Furnished with a three piece suite comprising; Panelled bath with shower attachment and shower screen, vanity wash hand basin and a low level WC.
Part tiled walls, tiled flooring, chrome heated towel rail.



TOTAL APPROX. FLOOR AREA 515 SQ.FT. (47.9 SQ.M.)
Whilst every attempt has been made to ensure the accuracy of the floor plan contained here, measurements of doors, windows, rooms and any other items are approximate and no responsibility is taken for any error, omission, or mis-statement. This plan is for illustrative purposes only and should be used as such by any prospective purchaser. The services, systems and appliances shown have not been tested and no guarantee as to their operability or efficiency can be given
Made with Metropix ©2017

