

241 Deansgate, Manchester, Lancashire, M3 4EL

Tel: 0161 637 8336

Email: contactus@ascendproperties.com

www.ascendproperties.com

Ascend

Built on higher standards



The Heart, Blue, Media City Uk Offers In Excess Of £155,000

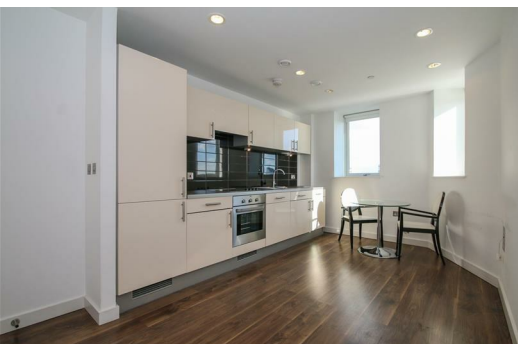
Ascend Properties are delighted to introduce to the market this exceptional two bedroom apartment, ideally situated within the heart of MediaCityUK!

Step inside the spacious entrance hall and you'll see that this popular pad has bags of style, with a fresh contemporary design throughout. Just down the hall you'll find the open-plan lounge/kitchen/dining area with a modern fitted kitchen and beautiful views across the Quay. This apartment also benefits from a gorgeous double bedroom with en suite and a further single bedroom.

Located just minutes away from the nightlife of the Quays, you really couldn't be better located for both work and play. The Metrolink station is literally right on your doorstep, so travelling into the city centre couldn't be easier. This one is set to be super-popular, so make sure you give us a call soon.

If you're interested in having a closer look, or have any questions, do get in touch.
A video walkthrough is available upon request.

Potential Achievable Rent: £1000pcm - 6% Net Yield
Service charge: £2466.52 pa



GROUND FLOOR
541 sq.ft. (50.3 sq.m.) approx.

Entrance Hall

Entrance door from the communal landing. Built in storage cupboard housing the hot water tank and plumbing for an automatic washing machine. Wood effect flooring, wall mounted heater. Doors to;

Living Kitchen

16'7" x 9'10" (5.07 x 3.016)

Furnished with a range of wall mounted and base level units with work top surfaces over incorporating a stainless steel sink and drainer unit with mixer tap. Built in electric oven and grill with a four-ring induction hob and extractor hood with lighting over. Integrated fridge freezer, part tiled walls, continuation of the wood effect flooring.
Dual aspect double glazed windows, wall mounted electric heater.

Bedroom One

14'1" x 8'4" (4.301 x 2.548)

Double glazed window, wall mounted electric heater, door to the ensuite shower room.

En Suite shower Room

Furnished with a three-piece suite comprising; Walk in shower enclosure, vanity wash hand basin and a low-level WC. Fully tiled walls, tiled flooring, chrome heated towel rail.

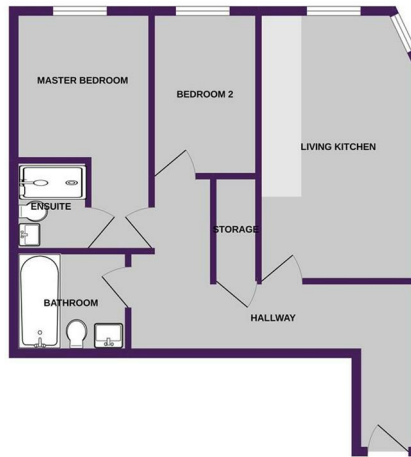
Bedroom Two

10'0" x 5'6" (3.061 x 1.688)

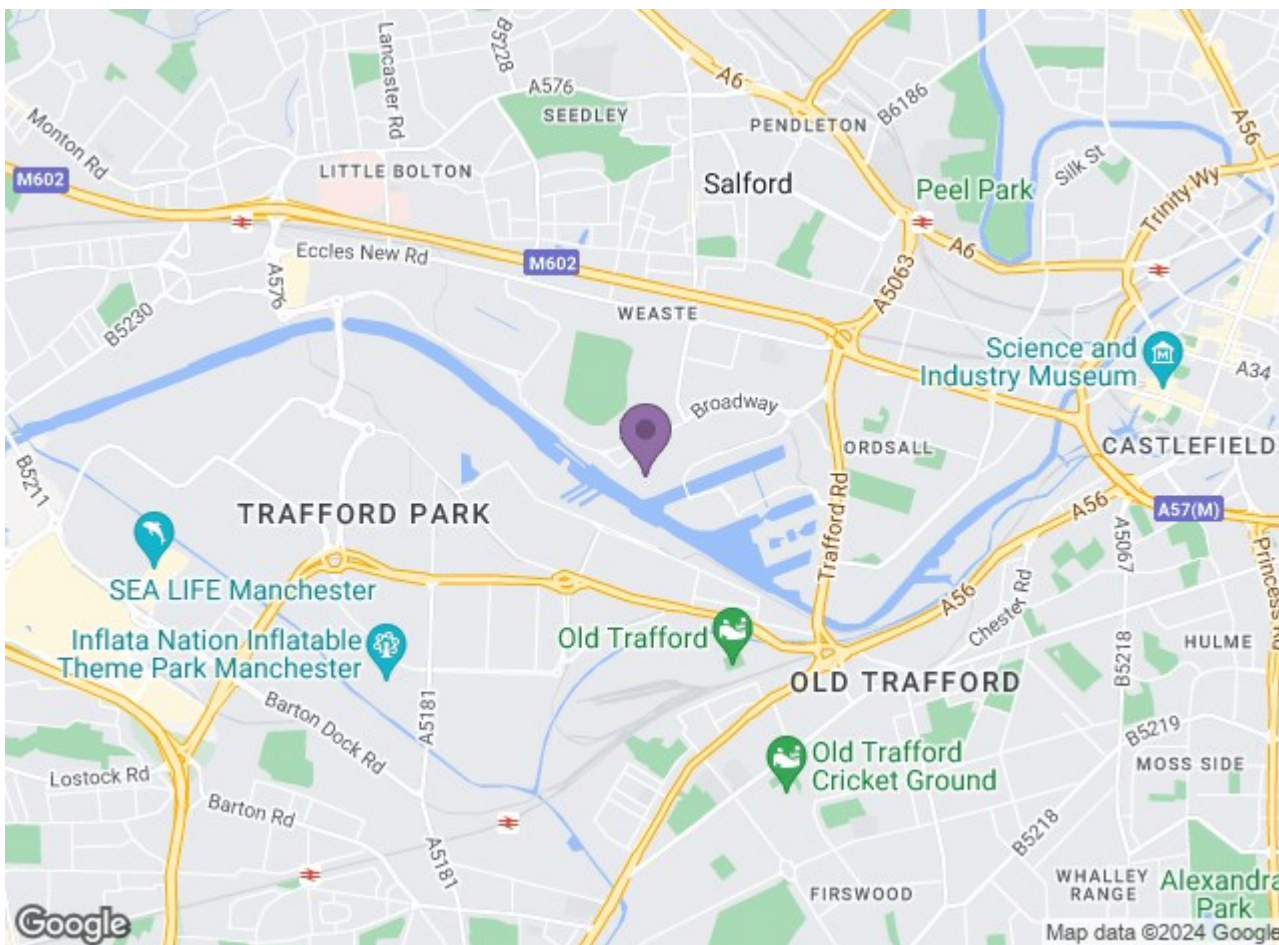
A single bedroom. Double glazed window, wall mounted electric heater.

Bathroom

Furnished with a three-piece suite comprising; Panelled bath with mixer shower over and shower screen, pedestal wash hand basin and a low level WC. Fully tiled walls and tiled flooring.



TOTAL FLOOR AREA: 541 sq.ft. (50.3 sq.m.) approx.
We have designed this floor plan to show the structure of the proposed construction. Measurements of walls, windows, doors and any other items are approximate and not intended to be used for any other purpose without the consent of the developer. This plan is for illustrative purposes only and should not be used for any other purpose. The floor plan is subject to change without notice. All dimensions are approximate and should be used as a guide only. All measurements are to the center of the wall unless otherwise stated. All measurements are to the center of the wall unless otherwise stated. All measurements are to the center of the wall unless otherwise stated. All measurements are to the center of the wall unless otherwise stated.



Energy Efficiency Rating		Environmental Impact (CO ₂) Rating	
Current	Potential	Current	Potential
83	84	G	G