

241 Deansgate, Manchester, Lancashire, M3 4EL

Tel: 0161 637 8336

Email: contactus@ascendproperties.com

www.ascendproperties.com

Ascend

Built on higher standards



Colmore Drive, Manchester

£875 PCM

Welcome to Hall Moss Farm. Hall Moss Farm is a new build development existing of 59 spacious family homes located near to Blackley and just 3 miles to Manchester city centre. This is the perfect location for families and couples looking for a location with great plenty of leisure facilities.

The Ellesmere has it all. On the ground floor, there's the spacious living room, and a contemporary open-plan kitchen and dining room with fantastic skylights, making this space ideal for entertaining or enjoying family time. Adding to the plentiful natural light, the French windows lead out into the private garden where you can get your friends round for al fresco dining and outdoor entertaining.

The downstairs WC is just off the hallway, then the stairs lead you up to the master bedroom, a double bedroom and single bedroom, and family sized bathroom. There's both upstairs and downstairs storage space too. This stunning energy-efficient home has beautiful flooring throughout and fitted alarm systems for your peace of mind. Great looking and thoroughly welcoming, everything in the Ellesmere has been designed and built to high standards.

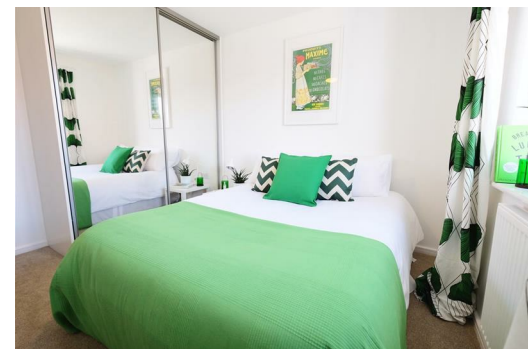
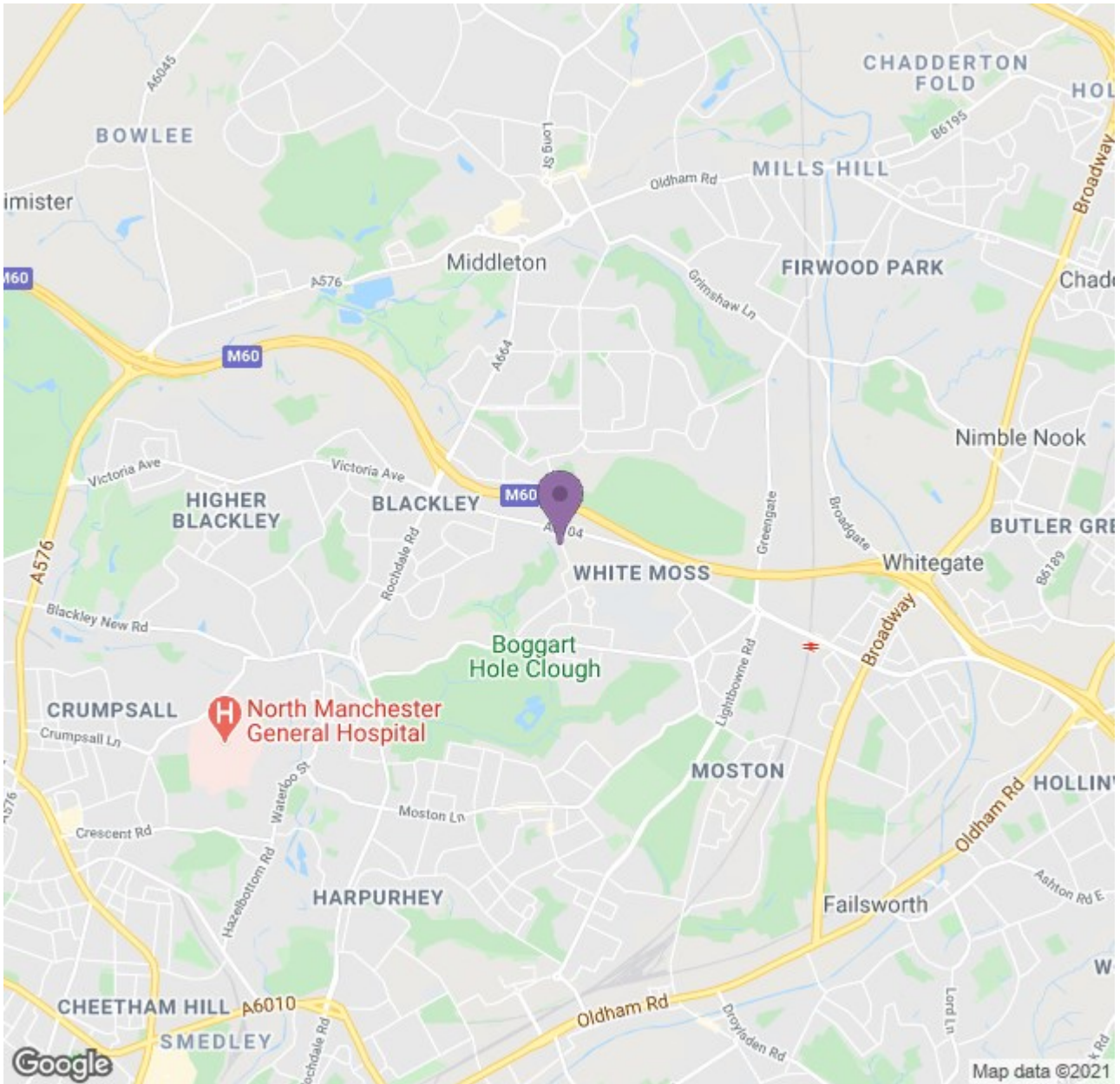
Whilst this property is a new build property, it has been previously let. All properties are maintained and inspected once a tenant has moved out in order to keep the property to a high standard.

Images are demonstrative of this property type. The images are therefore not plot or site specific and spec may vary slightly. Properties are let unfurnished.



Ascend

Built on higher standards



Energy Efficiency Rating		Environmental Impact (CO ₂) Rating	
Current	Potential	Current	Potential
83	88	83	88
A	A	A	A
B	B	B	B
C	C	C	C
D	D	D	D
E	E	E	E
F	F	F	F
G	G	G	G

Ascend

Built on higher standards